

New Cemetery for Queanbeyan Region



- Queanbeyan's population growth
 - Growing from 41,000 to >55000 in 15 years
 - Approx 69% projected increase in retirement ages demographic
 - Approx 16,000 residents > 50 yrs projected in 15 years
 - Queanbeyan's growth centres are to the south - Googong and Sth Jerrabomberra/Tralee
- ACT impact
 - Current service life of ACT's three Cemeteries is 8 years
 - New cemetery proposed for Mugga Lane – currently on hold.
 - ACT projected population is 500,000 by 2050
 - ACT increase in persons over 65 to increase 21% by 2050
- Based on current interments and take up of reservations, Queanbeyan General Cemetery has a service life of approximately 5 years.



Why does Queanbeyan need a new Cemetery



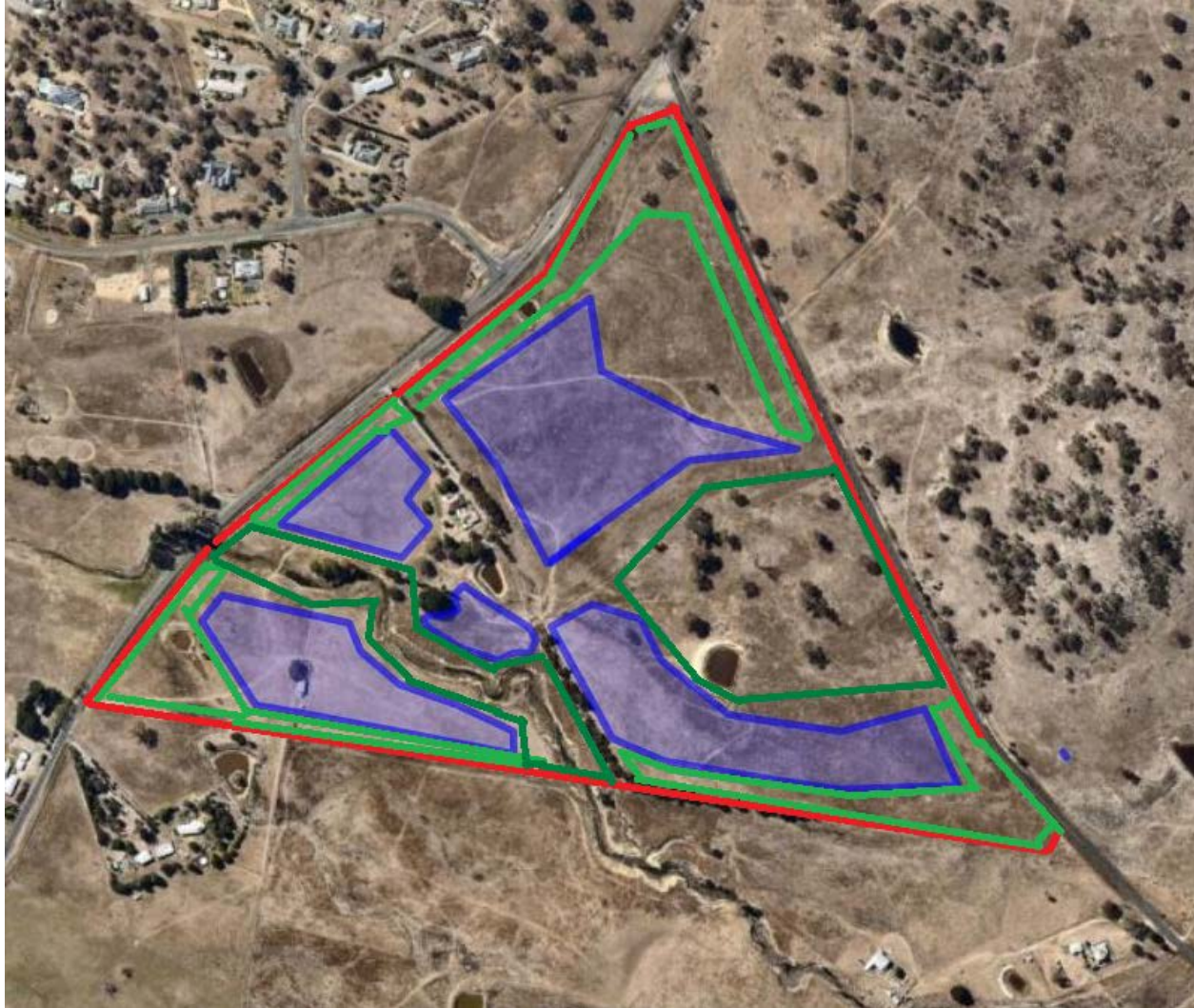
Queanbeyan General Cemetery 2010



Queanbeyan General Cemetery 2017



Proposed Royalla/Googong site



Site Boundary
36 Ha total

Potential Use
16 Ha

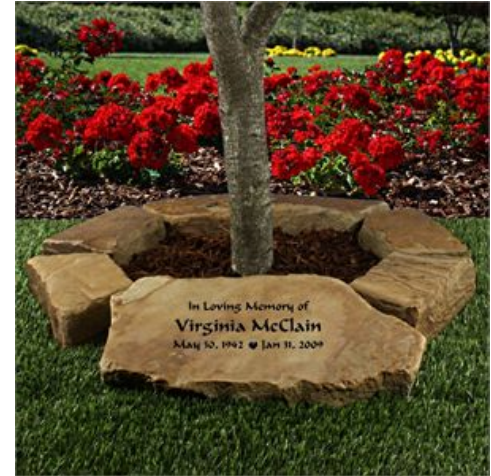
Buffer 5 Ha

Environmental
Restoration 6 Ha



What constitutes a Memorial Garden

- Well laid out property with well spaced series of “rooms” and park like look
- Extensive tree planting
- Potential landscaped gardens, eg. Rose Garden, Camellia Gardens etc
- Possible water features
- Minimum 20m wide perimeter buffer tree planting
- Restoration of environment, creek, remnant vegetation
- Landscaped areas for niche walls
- Facilities for staff and visitors
- Access drives and onsite parking



Very important to create a beautiful setting for families to visit



Next Steps

- Council received formal notification from DPIE that the Planning Proposal to amend the Queanbeyan LEP to make a cemetery a permissible use on 1187 & 1241 Old Cooma Road, Googong was published in the NSW Government Gazette on 3 September 2021.
- Within the various studies completed to-date, there are a number of recommendations for further investigation that will inform the detailed concept designs, operational plans and the development application (DA) process. These additional investigations include archaeological surveys, engineering investigation to inform integrated water management and further geotechnical investigation to inform greater detailed design.
- Concurrent to preparing the above documents, and carrying out the further investigations, a Business Management Plan will also be prepared and be guided by the various studies and strategies.
- All these studies and strategies need to be completed, along with detailed landscape and layout designs, to inform the DA process. All design work, studies and further community engagement are to be carried out prior to the DA being lodged. Based on the projected timeline in Table 1 over page, it is anticipated a DA could potentially be lodged later in 2022 or early 2023.
- At its meeting of 27 October 2021 Council endorsed the process of proceeding with the Memorial Park Project as outlined in Table 1 including:
 - Technical studies and designs
 - Communications Management Plan
 - Local Cemeteries Strategy
 - Business Management Plan

Table 1 – Next Steps and Timelines

<i>Item</i>	<i>Description</i>	<i>Commencement</i>	<i>Completion</i>
Comprehensive Communications Plan	Develop and implement a comprehensive communications plan for the project	November 2021	November 2021
Archaeology	Carry out Archaeological survey	November 2021	February 2022
Geotechnical	Conduct detailed Geotech survey to inform detailed design	December 2021	February 2022
Engineering	<ul style="list-style-type: none"> • Civil investigation and design • Hydrological investigation to inform Integrated Water Management Plan • Structural design 	February 2022	June 2022
		February 2022	June 2022
		June 2022	November 2022
Cemetery Consultant	Development of Business Operations Plan to inform detailed design	November 2021	November 2022
Detailed design	<ul style="list-style-type: none"> • Final cemetery layout/zones • Civil design/access/parking • Buildings • Landscape design 	February 2022	November 2022
Development Application	Preparation of report and DA documentation ready for lodgement	November 2022	December 2022