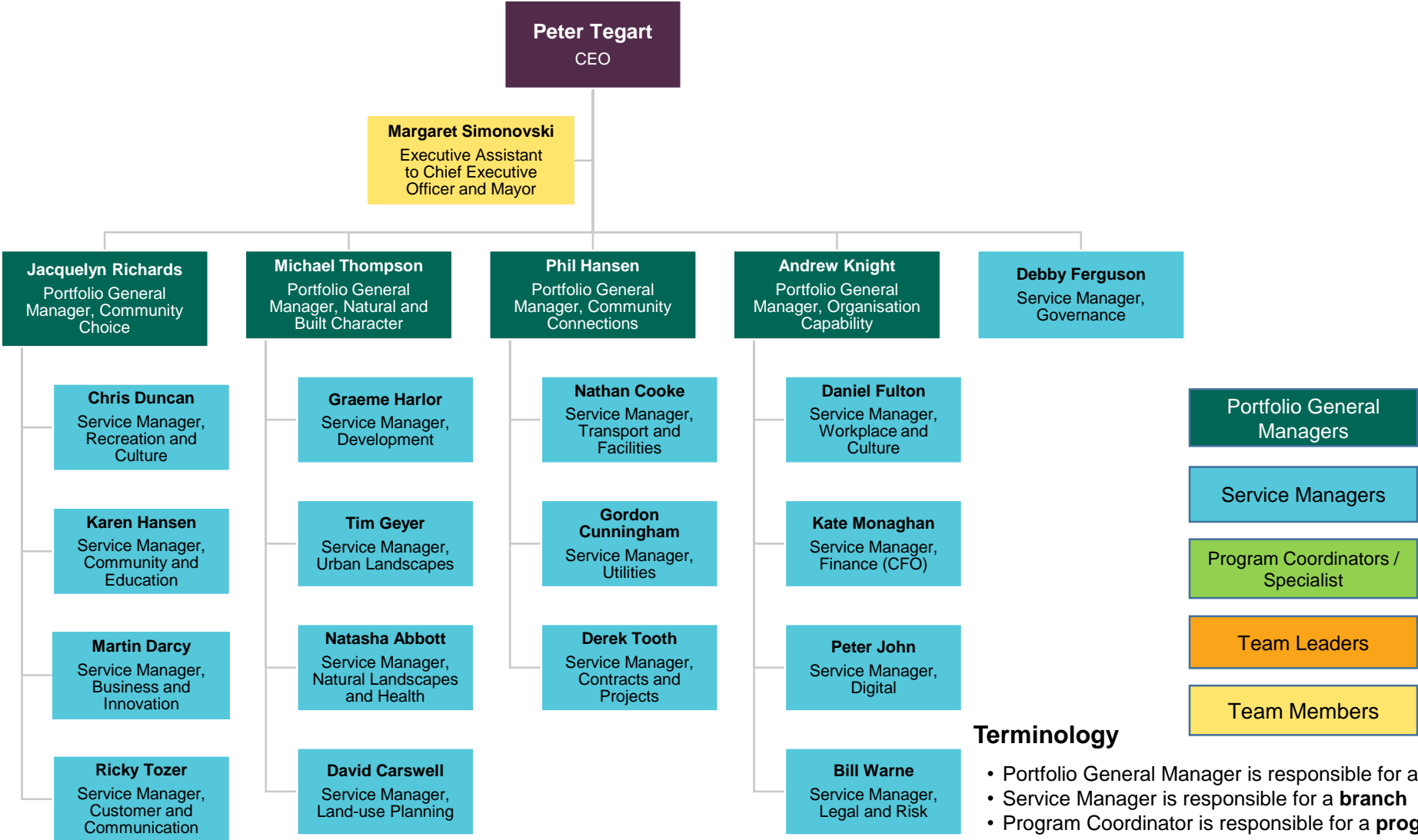




# Organisational Chart



### Terminology

- Portfolio General Manager is responsible for a **portfolio**
- Service Manager is responsible for a **branch**
- Program Coordinator is responsible for a **program**

This is a controlled document. Before using this document, ensure it is the latest version by checking QPRC's intranet, website or Electronic Document Register Management System. Printed or downloaded versions of this document are uncontrolled.