

QPRC Arts Trail 2018



QPRC Arts Trail 2018

Queanbeyan-Palerang Regional Council welcomes visitors to the 12th annual Arts Trail 2018. This wonderful event is now bigger than ever with a massive 30+ venues participating this year, offering visitors the opportunity to meet the regions artists first hand and discover their creative spaces.

As the event has grown exponentially this year, the event has been split over 2 weekends. The Queanbeyan and Bungendore region will host the first weekend, Saturday 20 and Sunday 21 October. The Braidwood region will host the closing weekend, Saturday 3 and Sunday 4 November.

Most venues are open both Saturday and Sunday from 10am – 4pm on their region weekend (some exceptions apply, please refer to each studio listing) to allow visitors to have the opportunity to visit the artists and studios of their choosing.

Take your time over the two weekends and explore the huge array of artists' studios, galleries and creative spaces opening up for this year's Arts Trail event.

Hungry, thirsty? Make a weekend of it, grab some friends and family and browse the workshops and galleries, then make a beeline for one of the many cafés, pubs and restaurants in the region for a bite to eat.

You're welcome. Soak up the unique offerings in the villages and townships that make up the Queanbeyan-Palerang region as you enjoy a well-earned coffee or glass of wine. The locals can't wait to meet you!

QPRC



The QPRC Arts Trail 2018 is proudly presented by
Queanbeyan-Palerang Regional Council
www.qprc.nsw.gov.au/events

Queanbeyan and Bungendore Region

Experience Queanbeyan, a city with country style, culture, history, heritage, politics, sport, beautiful parks and celebrations. You might be one of the lucky ones to spot a platypus in the Queanbeyan River, try your luck around dusk or early in the morning. Queanbeyan City is the gateway to adventure – in winter the Snowy Mountains are only a few hours away, and in the heat of summer, be swimming at the South Coast in under two hours.

Bungendore has many delightful things to do and see, explore the heritage-listed buildings on a self-guided walking tour and browse the galleries, antique stores and gift shops. The Bungendore Wood Works Gallery is a famous institution, showcasing some of the best wood art and contemporary furniture in Australia. Getting to Bungendore is easy. The drive from Canberra is 35 minutes and from Sydney three hours.

Art by Anders

Anders Mykkeltvedt

Anders Mykkeltvedt works in acrylic, water colour, pen and ink and other media. The location is a hybrid mix of motorcycles, art, fashion and tall stories.

Passions have always been Music, Art and Motorcycles resulting in a real “MAM’s” Shed.

Anders has exhibited across the country and been involved in such exhibitions as the now defunct Commonwealth Bank Art Awards. One time winner of the Queanbeyan Art Award in the Modern Category circa late 1970s.

Open: Saturday 9am – 4pm, Sunday 10am – 4pm

a: 144 Uriarra Road, Queanbeyan | 6297 8636

e: eurotunemotorcycles@bigpond.com

w: www.eurotunemotorcycles.com/artbyanders.html



QUEANBEYAN FUN FACT: Queanbeyan was home to a young George Lazenby, AKA James Bond in the movie ‘Her Majesty’s Secret Service’. *Shaken, not stirred.*

Image: Art By Anders



Queanbeyan South Public School

‘Art From the Heart’ - artwork by the students of Queanbeyan South Public School. Queanbeyan South use this event as an opportunity to showcase student achievement and display student work in a gallery style environment. This work is exhibition is called ‘Art from the Heart’ indicating the work and effort by teachers, students and parents.

There will be an official launch on Friday 19 October 5pm - 7pm. All welcome.

Open: Saturday 10am – 4pm, Sunday 10am – 4pm

a: 101 Cameron Road | 6297 3043

e: queanbeyas-p.school@det.nsw.edu.au





Dennis Mortimer

Dennis Mortimer

Dennis has been a practising artist for 20 years, 16 of those being in Queanbeyan. Dennis's current studio 'The Bunker' hosts art classes as well as performances such as music, theatre, film and spoken word from local performers, writers and composers. Dennis works in various mediums including sculpture, film, photography assemblage and painting. Dennis' work questions aspects of society and he is always happy to discuss any areas of his work with visitors.

Open: Saturday 10am – 4pm, Sunday 10am – 4pm

a: 4/6 Silva Avenue Queanbeyan | 0403 522 262
e: dennis_33@ymail.com



Sugarloaf Studio

Prue Baker

My interest is across a broad spectrum, but I make mostly slipped domestic earthenware, mugs and jugs and teapots. I have an electric kiln but also a wood-fired kiln that was built to fire oxidised earthenware @1100 degrees C without much fly ash. However, have been throwing stoneware/porcelain and firing at 1300 degrees. All the wood used is gathered from our property!

Open: Saturday 10am – 4pm, Sunday 10am – 4pm

a: 26 Sugarloaf Ridge Primrose Valley | 0429 662 008
e: prue_baker@hotmail.com

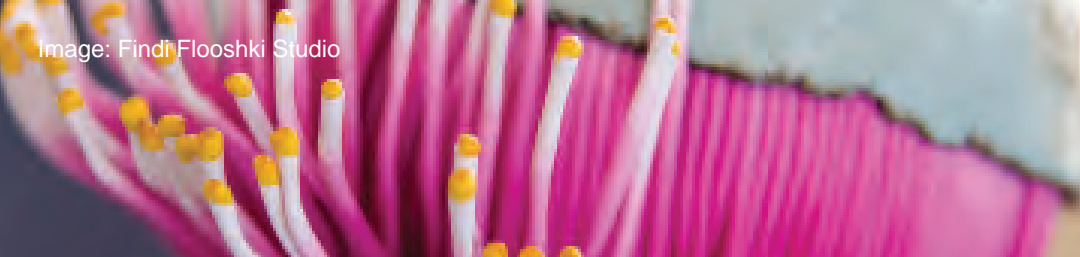


Queanbeyan Art Society

The Society is a non-profit organisation which holds art exhibitions, competitions and classes. It is a working gallery and holds monthly exhibitions which are a mix of open competitions and members only shows. Art classes are held on weekdays, weekends and evenings. A relaxed and supportive environment is encouraged and students of all levels are welcome.

Open: Saturday 10am – 4:30pm, Sunday 10am – 4:30pm

a: 6 Trinculo Place Queanbeyan
p: President 0439 392 709 | Secretary 0418 863 428
w: www.qarts.com.au
f: www.facebook.com/QueanbeyanArtSociety/



Findi Flooshki Studio

Natalie Maras

Natalie's unconventional use of polymer clay as a sculpting medium enables her to express stories in their natural bold colours and forms with delicate texture and refined surface effects. The works evoke early scientific interest in various plant and animal structures as well as imagine future applications for those interests and structures. Natalie's studio is located on a steep suburban (but terraced/landscaped) block. Very young, elderly or mobility impaired visitors may find the climb uncomfortable. Light refreshments will be available throughout the day for a gold coin donation. Free children's activities are also on offer.

Open: Saturday 10am – 4pm, Sunday 10am – 4pm

a: 48 Brereton St Queanbeyan | 0400 051 978
e: FindiFlooshki@gmail.com
w: findiflooshki.com
i: www.instagram.com/findi_flooshki/



FORM Studio & Gallery

Claire Primrose

Form Studio and Gallery is an independent contemporary artist run space in the vibrant arts district Queanbeyan NSW. Exhibiting both established and emerging artists working in traditional and new media, the gallery focuses on selecting the most exciting contemporary art for its program, sourced through an annual submission process.

On exhibition during the arts trail:

Sally Simpson - 'Breathing The Bones' - an exhibition of drawings of sculptures; and Alison McKay - 'Glass works' - an exhibition of small still life oil paintings.

Open: Saturday 10am – 4pm, Sunday 10am – 4pm

a: 1/30 Aurora Avenue Queanbeyan | 0430 359 776
e: formstudioandgallery@gmail.com
w: www.claireprimrose.com.au
f: www.facebook.com/formstudioandgallery



Kathleen Rhee Studio

Kathleen Rhee

Rich with vibrant colour and energy, Kathleen's paintings are inspired by the natural environment. Kathleen Rhee has been working from her home studio in Jerrabomberra for the last 10 years, but has an extensive study history from around the world. You will see everything she loves expressed in her paintings - lots of colour, detailed patterns, nature, texture, and a feeling of peacefulness. A wide range of artwork, sizes and prices to suite everyone.

Open: Saturday 10am – 4pm, Sunday 10am – 4pm

a: 7 Copperfield Place Jerrabomberra | 0405 340 012
e: kathleen_rhee@hotmail.com
w: kathleenrhee.weebly.com/
f: www.facebook.com/kathleenrheestudio
i: www.instagram.com/kathleenrhee/



Archbold Design

Alison Archbold

VizArche Farm would like to welcome visitors through their studio to see Alison Archbold's latest collection of works. Available to view or purchase will be her brand new original luxury Australian made cushions, canvas prints, greeting cards and gift cards. Whilst at the farm, you can also see the sheep, alpaca's, chicken's and gardens, which are the main focus and inspirations for her latest works.

Open: Saturday 10am – 4pm, Sunday 10am – 4pm

a: VizArche Farm, 359 Fernleigh Drive Fernleigh Park | 0401 540 056
e: archbolddesignart@bigpond.com
w: www.archbolddesign.com.au



Image: Kathleen Rhee





Cheryl Hodges Botanical Art

Cheryl Hodges

Cheryl is a botanical artist, painting watercolours on paper and vellum. Her technique involves building up the colour in many layers of soft washes, creating an almost translucent effect. She intensifies the final painting with darker washes and dry brush work. She particularly enjoys painting Australian natives, and has done many fruit studies. Recently she has begun painting insects.

Open: Saturday 10am – 4pm, Sunday 10am – 4pm

a: 259 Bicentennial Drive Jerrabomberra | 0402 436 723
e: hodgespc@bigpond.com
w: www.cherylhodges.com
f: www.facebook.com/cherylhodgesartist
i: www.instagram.com/cherylhodgesartist/



Nullabor Nights Knitwear Studio

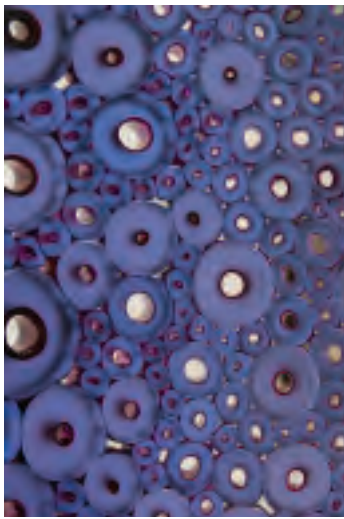
Alice Leda Pettiroso

Alice has been producing machine-knitted garments since 1991. Visitors to the Nullabor Nights Knitwear studio will be able to view textile pieces and wearable art that has featured in past exhibitions, as well as knitted garments for purchase made from Merino wool, pure cotton, linen, and other fibres. A combination of these fibres produce unique fabrics. The workshop will be open showing the various stages of production of garments from yarn to finished product. Garments may be made to order.

Open: Saturday 10am – 4pm, Sunday 10am – 4pm

a: 2/156 Gilmore Rd Queanbeyan | 0423 761 707
w: www.nullabornight.com
e: alice@nullabornight.com
f: www.facebook.com/nullabornightsknitwear





Curtis Glass Art

Matthew Curtis and Harriet Schwarzrock

Our studio is a shifting puzzle, at times a raucous family affair with contributions from two lovely boys and a menagerie. At other moments, it is a bustling glass blowing studio, hidden in our backyard in Queanbeyan. The objects produced in the studio, are often sculptural artworks, with incredible attention to detail, made predominantly from blown glass. There will be prototypes and production available for sale.

Open: Saturday 10am – 2pm, Sunday 10am – 2pm

a: 114 Uriarra Road Queanbeyan | 0404 107 000
e: mail@curtisglassart.com
w: www.curtisglassart.com
f: www.facebook.com/harriet.schwarzrock



Christine Marshall

From landscapes to still-life, cottages and old buildings, plants, flowers and birdlife, Christine is inspired by colour and form, texture and pattern. Her art depicts delightful life experiences.

Having a keen interest in nature, she is enchanted by the colours, texture and patterns nature delivers to the senses. Having had the pleasure of travelling throughout Australia, she is sensitive to the spirituality of our land. In combining the elements of nature and colour, she hopes to transport the viewer to a place of peace, harmony and pleasure - a time in memory, or a dream not yet travelled.

Working in acrylics, water colour or pen and ink, she endeavours to develop form and colour to depict a scene inspiring the viewer to appreciate life, take a deep breath and rediscover beauty in the world around them.

Open: Saturday 10am – 4pm, Sunday 10am – 4pm

a: 30 Thorpe Avenue Queanbeyan | 0417 448 388
e: marshallart1@bigpond.com

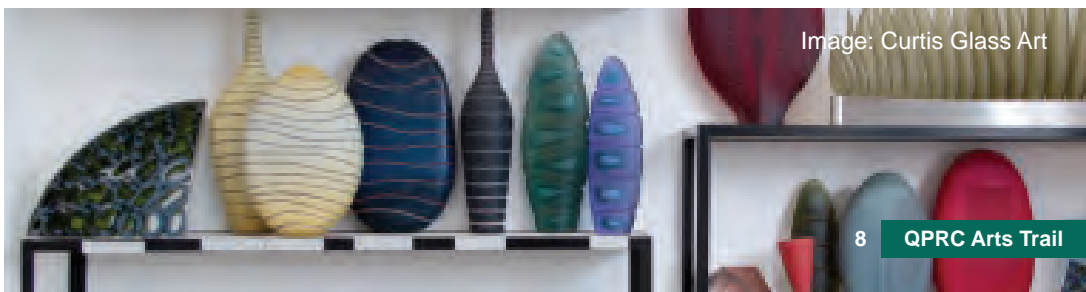


Image: Curtis Glass Art



Sculpture Studio **NEW**

Berendina de Ruiter, Wojciech Pieteranik and Peter King Sculpture Studio showcases 3 sculptors; Wojciech and Berendina work in stone, marble, sandstone, limestone and bronze, and Peter works in clay and bronze.

Wojciech and Berendina are both Churchill Fellows. Since February 2018, they share their studio in Queanbeyan and have established a display area of work. This is the group's first year in the event.

Open: Saturday 10am – 4pm, Sunday 10am – 4pm

a: Unit 4/6 Aurora Avenue Queanbeyan | 0414 997 900
e: berendina.deruiter@gmail.com
w: www.artmajeur.com/berendina



The Queanbeyan Hive **NEW**

The Queanbeyan Hive is a brand new gallery and cultural hub inside a lovingly restored Heritage cottage in the heart of old Queanbeyan. Owners have been meticulously mending and lovingly restoring the building to its former glory. In doing this they have also unearthed the fascinating history of the old cottage. Brand new to Queanbeyan, the Queanbeyan Hive will be sure not to disapoint.

Open: Saturday 10am – 4pm, Sunday 10am – 4pm

a: 74 Crawford Street Queanbeyan | 0403 994 446
e: helen@artspirit.com.au
w: www.qbnhive.buzz
f: www.facebook.com/qbnhive



Julie Ryder

A self-taught, mixed media artist, mother and teacher working in a large variety of mediums to create her unique style of vibrant, colourful, happy and uplifting art works. Julie's previous work as a floral designer has been a huge inspiration for her work. Her passion for colour and texture is evident throughout her canvas artwork.

Her watercolour artworks are a mix of bright and colourful paintings of all different types of subjects. Julie works with coloured pencils and ink in some of her watercolour paintings.

Julie also holds a range of mixed media workshops for those who want to try something different or learn how to paint one of her creations.

Open: Saturday only 10am – 4pm

a: 158 Halloran Drive Jerrabomberra | 0415 230 555
e: juliemryder01@gmail.com
w: juliemryder01.wixsite.com/julie-ryder-art
f: www.facebook.com/JulieRydermixedmedia



Teapot Studio **NEW**

Helen Peart

Teapot Studio – a stand-alone small space where serenity rules and botanical art is painted - from eucalypt trees in flower to colourful falling autumn leaves and many specimens of flowering plants. A love of birds see some 'fly' into a botanical work to sit on a branch covered in lichen or to inspect the seed pods – local birds are currently the favourites to paint, especially the many species which frequent our garden and enjoy the birdbaths.

Botanical art is very time-consuming with great attention to detail and scientific correctness. Helen works mainly in watercolour but also with graphite and pastels. Cards are printed from original works and will be on display. Demonstration of works in progress no doubt will contain a bird or two. Helen is a member of the Botanical Art Society of Australia, the Art Society of Canberra and enjoys painting with the Botanical Art Group at the Australian National Botanic Gardens.

Open: Saturday 10am – 4pm, Sunday 10am – 4pm

a: 3 Beston Place, Greenleigh | 0407 103 471
e: bhpeart@bigpond.net.au



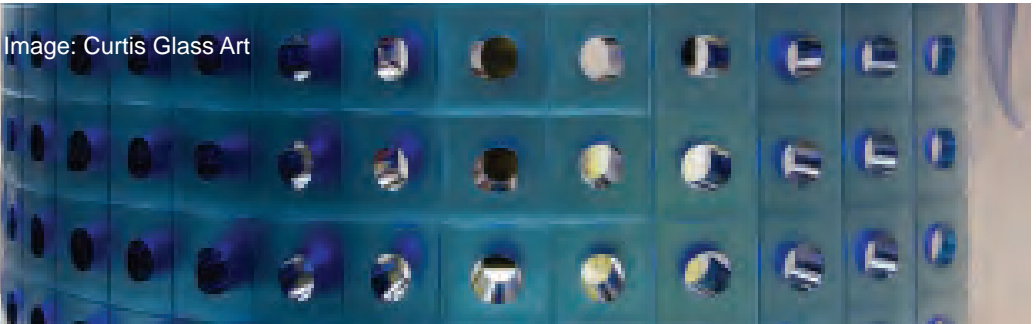
Michaela Laurie Studio

Michaela works from her studio “the shed” on a property near Googong township. She looks onto beautiful Beatty Hill, Mount Campbell and Mount Pleasant which are her constant inspiration particularly at sunrise and sunset. She is inspired by nature but adds her own touches of whimsy to it to create calm fantastical landscapes which encourage the viewer to look closely and imagine they are exploring. Michaela is a mixed media artist with coloured pencils being her favourite medium.

Open: Saturday 10am – 4pm, Sunday 10am – 4pm

a: 1466 Old Cooma Road Googong | 0407 910 181
e: michaela.laurie1@gmail.com
w: michaelalaurie.wordpress.com
f: www.facebook.com/michaelalauriestudio
i: www.instagram.com/michaelalauriestudio

Image: Curtis Glass Art



The Outsider Gallery

Gunther Deix

Gunther is one of the most prominent Outsider artists in Australia. The Outsider category implies that Gunther is self-taught and follows no school or style. Gunther’s work is held in the collection of the National Gallery of Australia, as well as notable corporate and private collections of contemporary art. Gunther’s house and studio is a must visit, with every square inch being painted, sculpted or covered in mosaic. Gunther recently shared the major award at the 2018 QPRC Regional Art Awards.

Open: Saturday 10am – 4pm, Sunday 10am – 4pm

a: 86 Foxlow Street Captains Flat | 6236 6160
w: <https://plus.google.com/102050732099976204524>
e: hrgisunt@bigpond.com

X Gallery

Xanthe Gay

X Gallery exhibits various artists in different media as well as the work of resident silversmith Xanthe Gay.

The current exhibition 'Hyperkulturemia' by Matthew Sheargold explores the ideas of memory and experience through a series of vivid sculptural paintings.

Open: Saturday 11am – 5pm, Sunday 11am – 5pm

a: 32 Gibraltar Street Bungendore | 6238 0550

e: xgallery@msn.com

w: www.facebook.com/xgallerybungendore

i: www.instagram.com/xanthe



Bungendore Fine Art

Opposite Bungendore Wood Works Gallery, now in its 13th year of trading, Bungendore Fine Art is a small friendly gallery owned and operated by eight working artists.

The artist partners are Ray Barnett, Jenny Becker, Roz Dibley, Sue Grieves, Val Le Maitre, Beth Monahan, Janette McGuffog and Pam Padovan. The partners are very different in their use of media and subject and have been part of the arts and gallery landscape of the Canberra region for many years - with many awards and past exhibitions.

Every month or two a new artist – established and new – is displayed. Visitors can expect to see an ever-changing display of over 150 paintings, including large works to miniatures, from the traditional to the abstract.

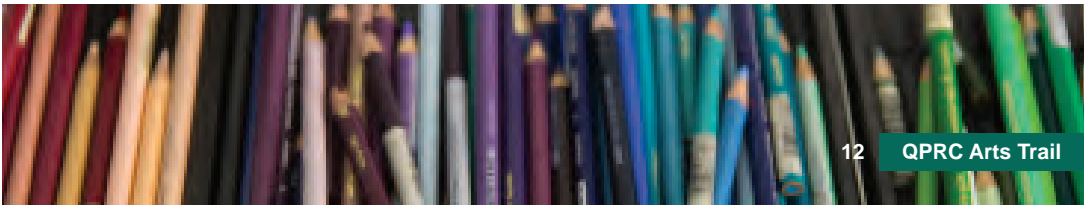
Open: Saturday 10am – 4:30 pm, Sunday 10am – 4:30pm

a: 42b Ellendon Street Bungendore | 6238 1640

e: artist@bungendorefineart.com.au

w: www.bungendorefineart.com.au

f: www.facebook.com/bungendorefineart





Suki & Hugh Gallery

Suki & Hugh is a purpose built gallery in Bungendore. The contemporary, light filled gallery has a new exhibition every six weeks showing an exciting mix of local and interstate artists. There is also a gallery shop featuring glass, ceramics, paintings and drawings, all hand made by local artists. During the arts trail, an exhibition of watercolours based on memories travelling through the landscape will be displayed. These watercolours depict a sense of stillness that makes us reflect on ourselves. Depicting moments in time, present and past, taking us on a journey of silhouettes and horizons of the Australian landscape. Capturing the essential elements of a visual and spiritual experience, eliminating unnecessary details.

Open: Saturday 10am – 4pm, Sunday 10am – 4pm

a: 38A Gibraltar Street Bungendore | 6238 1398
e: susan@sukihugh.com.au
w: www.sukihugh.com.au
i: www.instagram.com/SUKIHUGH_GALLERY



Saskia's Studio / Gallery

Saskia Bleys

A classically trained sculptor and painter, Saskia's unique watercolour style sometimes has a dreamlike quality, while her pen and wash images are often humorous. Many of her oil paintings lean towards the semi-abstract. For the Arts Trail Saskia will be focussing on her watercolours, charcoals, pen and washes, and oil paintings. Saskia provides an atmosphere in her home and studio where she invites you to sit, relax and enjoy some of the images she has created. She will be on site to welcome visitors to her studio and will be on hand to speak about her work.

Open: Saturday 10am – 4pm, Sunday 10am – 4pm

a: 206 Macs Reef Road Bywong | 0413 352 092
e: sbleys@gmail.com
w: www.saskiasgallery.com

BUNGENDORE FUN FACT: There is said to be a resident ghost at Bungendore's Royal Hotel - or as the locals refer to it, the Top Pub. The pub on Gibraltar Street was built and opened in September 1882, and the ghost has been seen and felt by many guests staying in the rooms over the years.

Studio 12

At Studio12 you can find an eclectic mix of art and craftspeople demonstrating their skills, from printing and drawing to millinery and pottery. There will be something for everyone and visitors can experience artists at work as well as a range of finished items for sale.

The Bungendore War Memorial Hall is a great venue for the group who are all local people. It is a great opportunity to see a range of high quality work in one place and maybe pick up a few early Christmas gifts.

Open: Saturday 10am - 4pm, Sunday 10am – 4pm

- a: Bungendore War Memorial Hall,
Molonglo Street Bungendore
e: info@themarketatbungendore.com
w: www.themarketatbungendore.com
f: www.facebook.com/TheMarketAtBungendore



Bungendore Wood Works Gallery

Bungendore Wood Works Gallery specialises in exhibiting and promoting high quality Australian made wood art, sculpture, craft and contemporary furniture from the country's foremost designer/makers in wood.

The Arts Trail coincides with Australian Wood Review Studio Furniture Exhibition. This will be an exciting landmark exhibition with over 70 new works on show in the gallery from national and international wood workers. The Opening and Awards Presentation will be held on the afternoon of the 20th and a floor talk with judges and makers on the 21st.

Open: Saturday 9am – 5pm, Sunday 9am – 5pm

- a: 22 Malbon Street, Bungendore | 6238 1682
e: gallery@bwoodworks.com.au
w: bungendorewoodworks.com.au
f: www.facebook.com/bwoodworks



Image: Suki & Hugh Gallery

Wood Dust Festival

For five days Queanbeyan and Bungendore will be the centre of the woodworking world as local and international celebrities descend for a series of 'Yarns', woodworking masterclasses, and a world class fine furniture exhibition all topped off with a timber and tool marketplace that you won't want to miss.

The Wood Dust festival will take place across a number of venues. In Queanbeyan from 17–19 October, daily masterclasses will run at the Dunstone Design Workshops featuring North American and Australian woodworking masters including Michael Fortune, Andy Buck, Vic Tesolin, Ross Annels, and Bern Chandley.

'Yarns' will take place at The Q Theatre on Wednesday and Thursday evening with special guests Tom Lie Nielsen, Matt Kenny (Fine Woodworking magazine), Terry Gordon, Wally Wilson (Veritas) and a whole bunch of others from Australia and around the globe.

The Timber and Tool Marketplace will run over the weekend of 20 and 21 October at the Bungendore Showgrounds and will be an educational and entertaining celebration of the craft. There will be back-to-back free demonstrations at the 'Village', a 'Meet the Makers' stand where you can chat face to face with woodworking legends, Luthiers Lane with live music, wooden boats, axe throwing courtesy of Maniax, good food, coffee and craft beer. And of course – all the best woodworking tools available.

AWR Studio 18, the exhibition and competition of fine woodworking opening on the evening of Saturday 20 at the Bungendore Wood Works Gallery, is the richest and best subscribed event of it's kind in the Southern Hemisphere. Makers from all over Australia, New Zealand and further afield will be competing for some of the best prize money in wood work.

Open: Saturday 10am – 4pm, Sunday 10am - 4pm

a: Bungendore Show Grounds
w: www.wooddustaustralia.com/
i: www.instagram.com/wooddustaus/
f: www.facebook.com/wooddustaus/

