

NOTIFICATION FOR RESIDENTS AND BUSINESSES

BUNGENDORE ROUNDABOUT

MALBON & MOLONGLO STS - MAY TO NOVEMBER 2020

Project Overview

The "Give Way" intersection at the corner of Malbon Street and Molonglo Street in Bungendore experiences significant traffic congestion, particularly during school holiday periods, often causing long traffic delays.

To address this issue, Queanbeyan-Palerang Regional Council will install a roundabout at the intersection to reduce congestion and improve safety for all road users, including cyclists and pedestrians.

The estimated project cost is \$2.5 million. Grant funding for the construction has been received from Transport for NSW (TfNSW) under the "Monaro Palerang Roads Program".

Current Status

We are currently completing final designs for the construction of the new roundabout and finalising the assessment of construction tenders.

Community feedback from past consultation on design concepts has been incorporated into the final designs, including the retention of trees, inclusion of a garden bed within the roundabout, minimisation of impacts to traffic during construction, and retention of on-street parking as much as possible.

Traffic management during construction is a key element of the project. Further planning for traffic arrangements will take place when the successful tenderer has been appointed. We will provide further information when details are confirmed.

Construction Timing

Preliminary construction activities (early works) are expected to **commence in early May**. This will involve relocating utilities such as water, sewer, telecommunications etc in the vicinity of the roundabout to make way for construction.

The main roundabout construction works are expected to **commence in early July 2020**. Pavement works are intended to be completed before the September NSW school holidays. Constructing the roundabout outside of peak travel periods will minimise the impact on holiday traffic.

Incidental works such as landscaping would be **completed by the end of November 2020**.

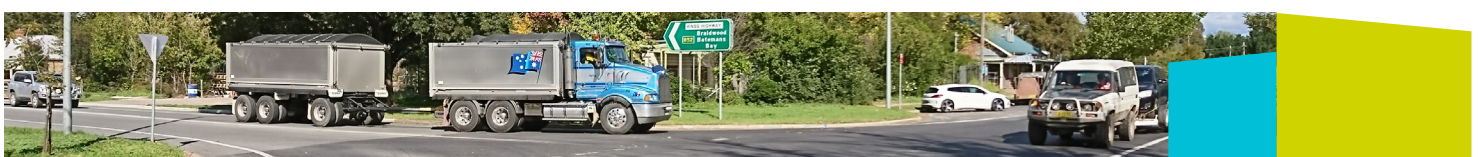
Working Hours

The construction will take place as follows:

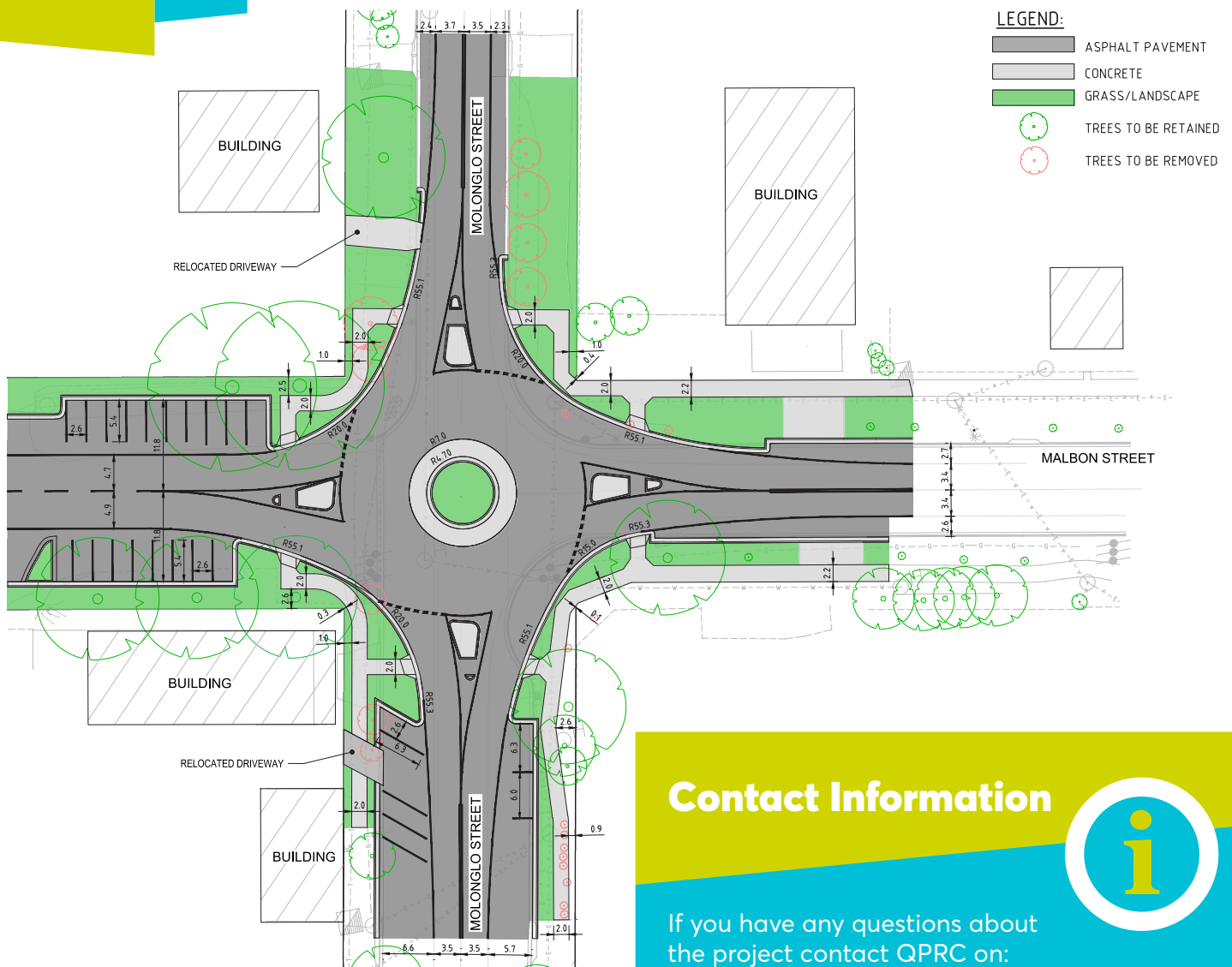
- 7am to 5pm, Monday to Friday; and
- 8am to 1pm, Saturdays

There is also the possibility that the NSW Government COVID-19 Order for extended construction work days will still apply when construction starts. In that case, weekends and public holidays are treated like weekdays.

The only approved work that may take place outside of these hours includes the delivery of materials which may be required outside normal hours because of requests by police or other authorities for safety reasons, and emergency safety work to reduce the risk of harm to staff, drivers, property and the environment.



Preferred Design Concept



Further Detail

Further detail about the project will be made available on the project page on the QPRC website at: www.qprc.nsw.gov.au/Major-Works-Projects/Bungendore-roundabout-Kings-Highway

Who is involved in this project?

Council is coordinating the project and will engage contractors for most aspects of the project including construction, landscaping, line marking and traffic control.

Contact Information

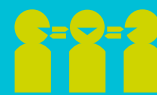


If you have any questions about the project contact QPRC on:

1300 735 025

BGDrroundabout@qprc.nsw.gov.au

www.qprc.nsw.gov.au



If you need help understanding this information, please contact the Translating and Interpreting Service on 131 450 and ask them to call us on 1300 735 025



Bungendore Off-Street Car Park

Construction of the planned off-street car park in Bungendore will also commence in the coming months. The new car park will be accessed from Ellendon Street (from between Malbon and Gibraltar streets) and will help ease parking difficulties in Bungendore's main streets.

Further announcements will be made prior to construction commencing.