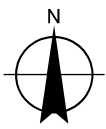
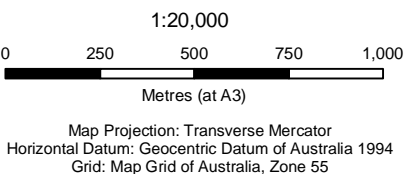


- | | | | | | |
|-----------------|----------------------------------|--|--------------------------------------|---------------------------------|---------------------------|
| Heritage | ThreatenedSpecies | Ecological Community | GoldenSunMothPotentialHabitat | NativeGrassland | Initial Alignments |
| ▲ Heritage | ● Aprasia | Remnant Yellow Box Red Gum Grassy Woodland | GoldenSunMothHabitat | NativeGrassland | Option 1 |
| | ● Brown Tree-creeper | Swainsona recta Secondary grassland Remnant Box Gum Woodland | ApraisialHabitat | NaturalTemperateNativeGrassland | Option 2 |
| | ● Diamond Fire Tail | HeritagePADs | NonNativeGrasslandAgriculture | BoxWoodlandForest | Option 3 |
| | ● Golden Sun Moth | RockOutcrop | | | Option 4 |
| | ● Hooded Robin | | | | Option 5 |
| | ● Leucochrysus albicans tricolor | | | | Option 6 |
| | ● Perunga Ochracea | | | | |
| | ● Swainsona sericea | | | | |



- LEGEND**
- SiteBoundary
- Contour (10m interval)



Queanbeyan City Council	Job Number	23-12266
Dunn's Creek	Revision	A
	Date	5 Dec 2007

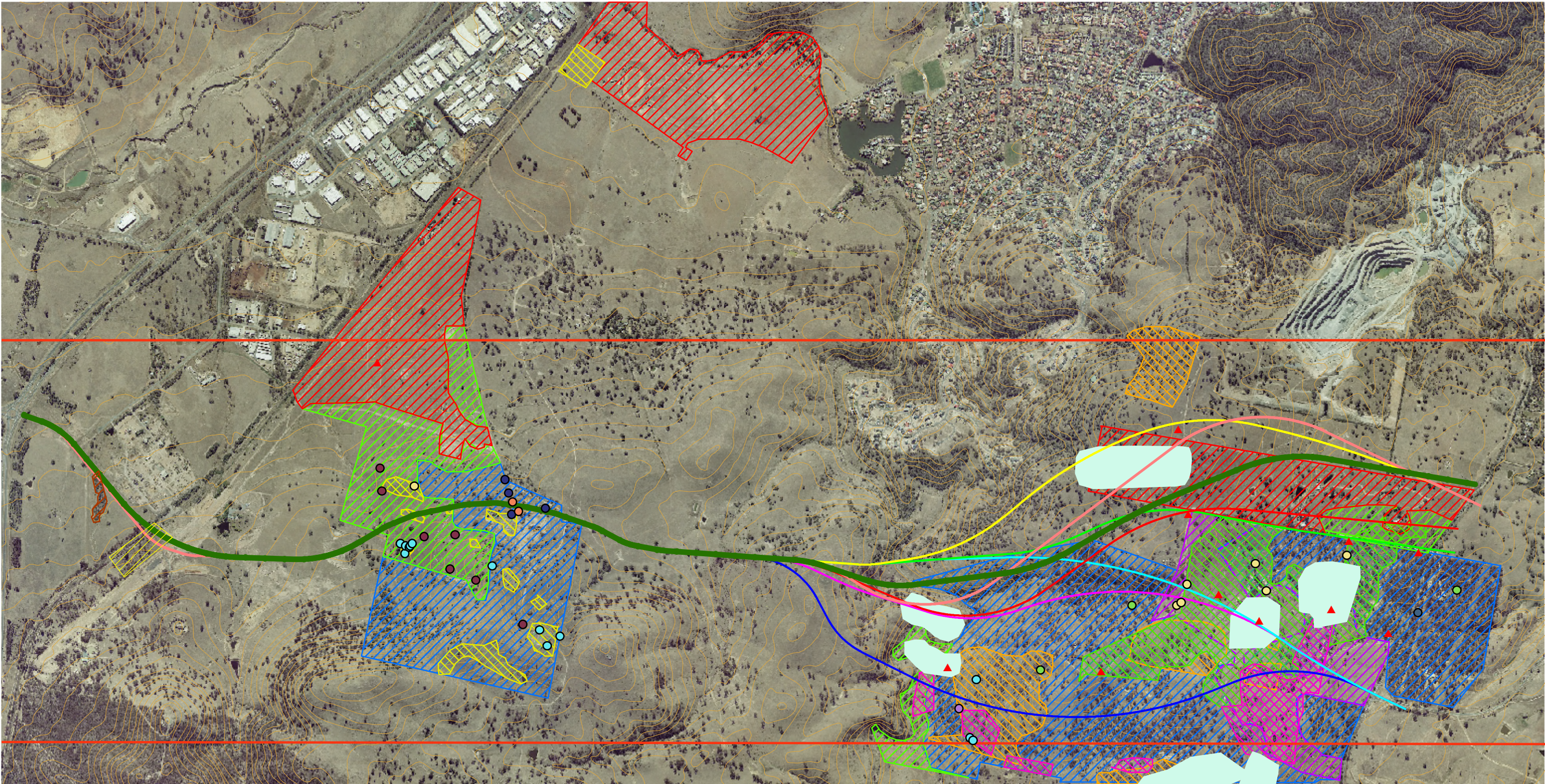
Initial Alignments and Constraints

Figure D1



Appendix F
Preferred Alignment

DRAFT



- Heritage**

 - Heritage
- ThreatenedSpecies**

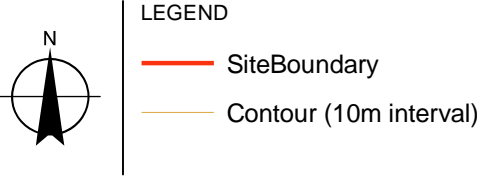
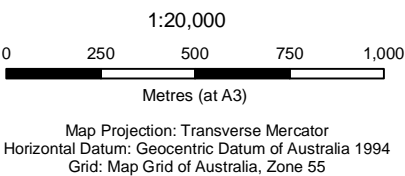
 - Aprasia
 - Brown Tree-creeper
 - Diamond Fire Tail
 - Golden Sun Moth
 - Hooded Robin
 - Leucochrysum albicans tricolor
 - Perunga Ochracea
 - Swainsona sericea
- Ecological Community**

 - Remnant Yellow Box Red Gum Grassy Woodland
 - Swainsona recta Secondary grassland Remnant Box Gum Woodland
 - HeritagePADs
 - RockOutcrop
- GoldenSunMothPotentialHabitat**

 - GoldenSunMothHabitat
 - AprasiaHabitat
 - NonNativeGrasslandAgriculture
- NativeGrassland**

 - NaturalTemperateNativeGrassland
 - BoxWoodlandForest
- Alignment Options**

 - Option 1B (Preferred Route)
 - Option 1A
 - Option 1
 - Option 2
 - Option 3
 - Option 4
 - Option 5
 - Option 6



Queanbeyan City Council	Job Number	22-12266
Dunn's Creek	Revision	A
	Date	5 Dec 2007

Preferred Alignments and Constraints

Figure E1



Appendix G
Property Impacts

DRAFT