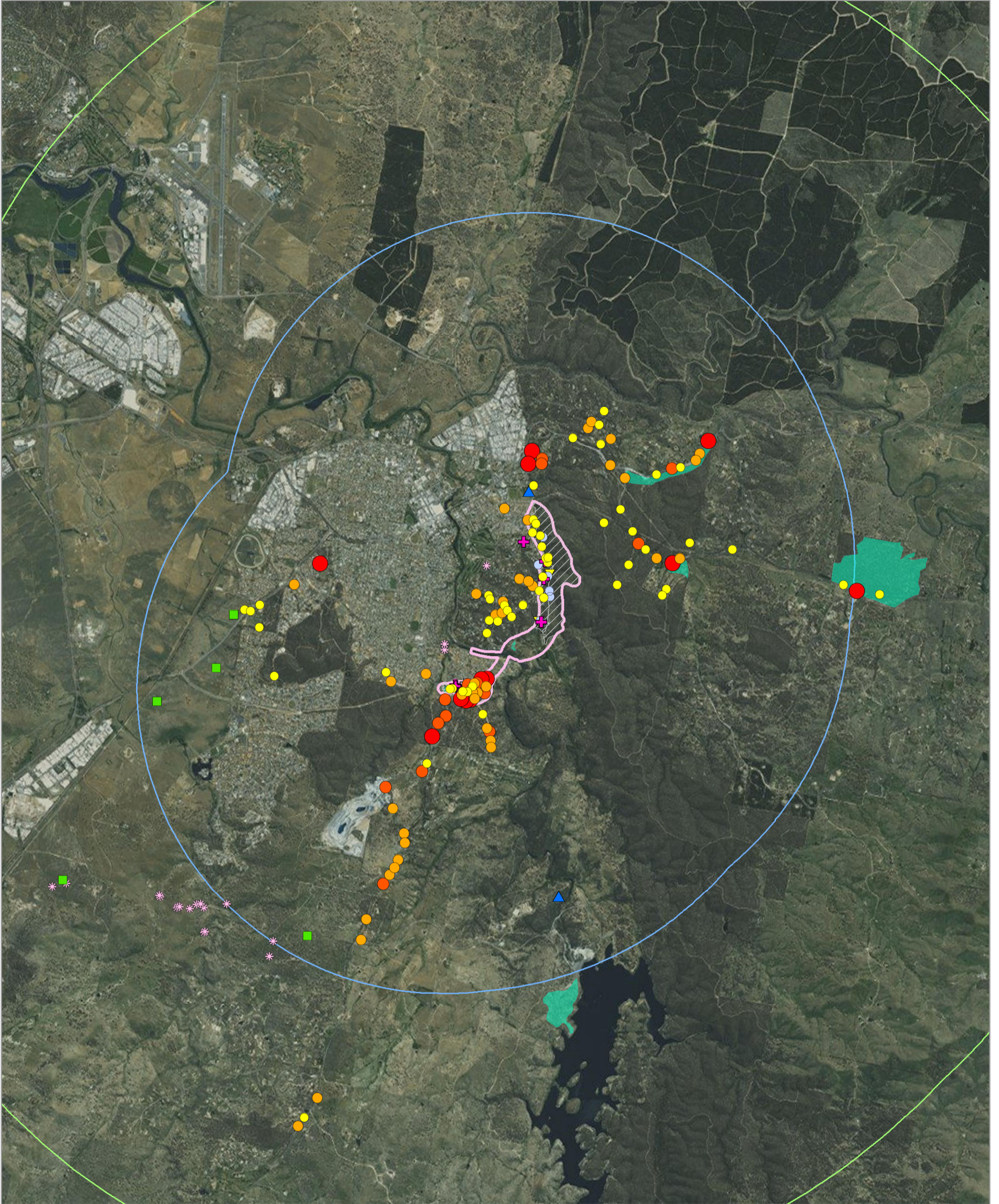


# Ellerton Drive extension - Biodiversity Matters of National Environmental Significance - locality



<ul style="list-style-type: none"> <li>Study area</li> <li>5km buffer</li> <li>10km buffer</li> </ul>	<ul style="list-style-type: none"> <li>Threatened flora records</li> <li>Box-Gum Woodland (EPBC only)</li> <li>Hoary Sunray populations</li> <li>Number of individuals</li> <li>Up to 200</li> <li>200 - 499</li> <li>500 - 999</li> <li>1000+</li> </ul>	<ul style="list-style-type: none"> <li>Threatened fauna records (Bionet)</li> <li>Golden Sun Moth</li> <li>Koala</li> <li>Pink-tailed Legless Lizard</li> <li>Threatened fauna habitat</li> <li>Koala</li> <li>Pink-tailed Worm Lizard and Golden Sun Moth</li> </ul>	<ul style="list-style-type: none"> <li>Fauna survey effort</li> <li>Koala scat search</li> <li>Koala call playback / Spotlight</li> <li>Diurnal reptile search</li> <li>Nocturnal reptile search</li> </ul>
---	---	---	---

**Notes:**  
 - Field data collected by nghenvironmental field staff (October 2012)  
 - Development envelopes provided by QCC  
 - Base map sourced from ESRI Online © 2010 Microsoft Corporation and its data suppliers

0 1 2 Kilometres

A3 @ 1:60000  
 Ref: 4733 - 13  
 Author: DM

**ngh environmental**

www.nghenvironmental.com.au