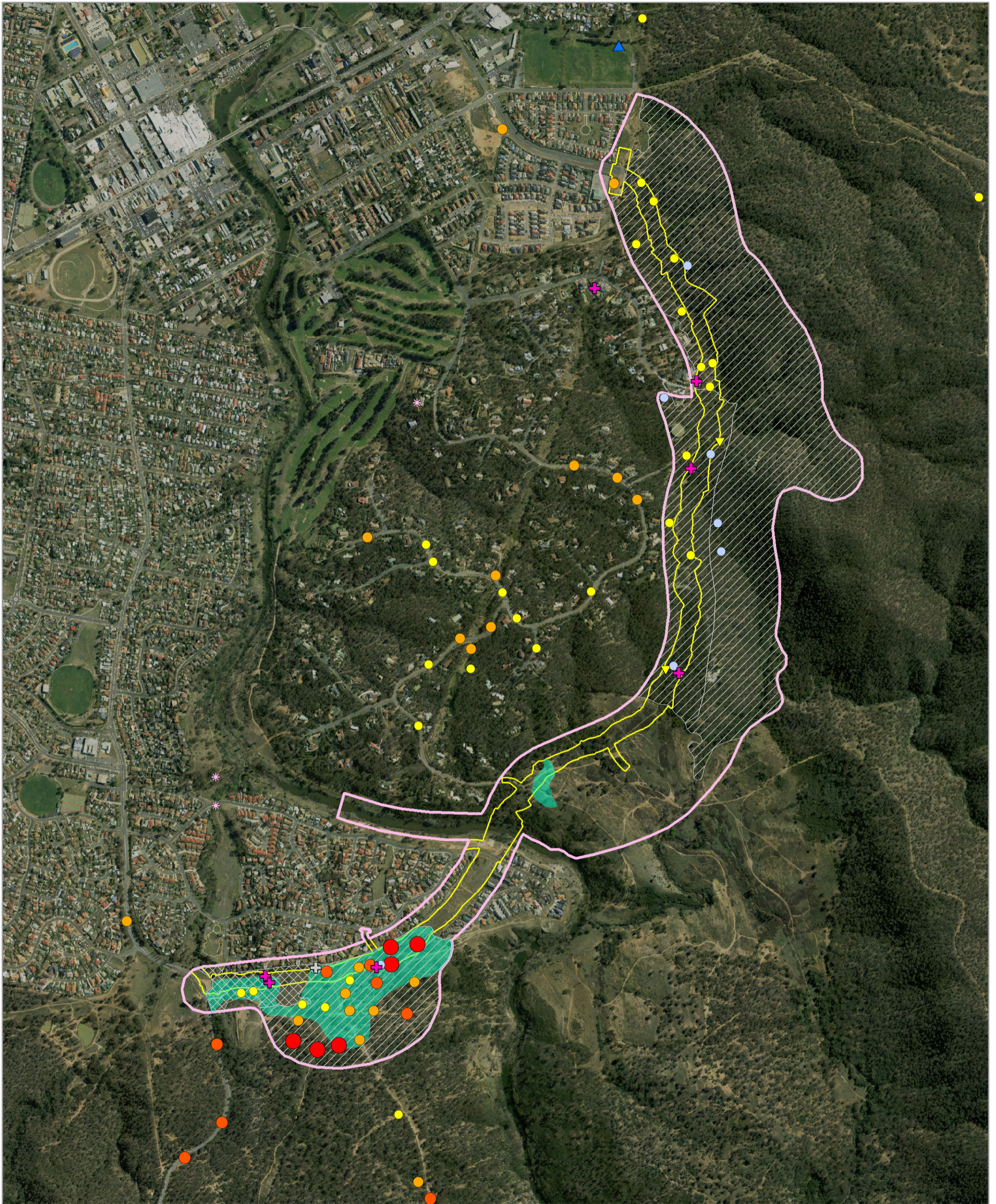


# Ellerton Drive extension - Biodiversity Matters of National Environmental Significance - study area



- |  |  |   |   |
|--|--|---|---|
| <ul style="list-style-type: none"> <li><span style="border: 1px solid pink; display: inline-block; width: 15px; height: 10px; margin-right: 5px;"></span> Study area</li> <li><span style="border: 1px solid yellow; display: inline-block; width: 15px; height: 10px; margin-right: 5px;"></span> Subject site</li> <li><span style="border: 1px solid blue; display: inline-block; width: 15px; height: 10px; margin-right: 5px;"></span> 5km buffer</li> <li><span style="border: 1px solid green; display: inline-block; width: 15px; height: 10px; margin-right: 5px;"></span> 10km buffer</li> </ul> | <ul style="list-style-type: none"> <li><span style="background-color: #00FF00; display: inline-block; width: 15px; height: 10px; margin-right: 5px;"></span> Threatened flora records</li> <li><span style="background-color: #00FF00; border: 1px solid black; display: inline-block; width: 15px; height: 10px; margin-right: 5px;"></span> Box-Gum Woodland (EPBC only)</li> <li>Hoary Sunray populations</li> <li>Number of individuals</li> <li><span style="color: yellow; font-size: 12px; margin-right: 5px;">●</span> Up to 200</li> <li><span style="color: orange; font-size: 12px; margin-right: 5px;">●</span> 200 - 499</li> <li><span style="color: red; font-size: 12px; margin-right: 5px;">●</span> 500 - 999</li> <li><span style="color: red; font-size: 18px; margin-right: 5px;">●</span> 1000+</li> </ul> | <ul style="list-style-type: none"> <li><span style="color: blue; font-size: 12px; margin-right: 5px;">▲</span> Koala</li> <li><span style="color: pink; font-size: 12px; margin-right: 5px;">✦</span> Pink-tailed Legless Lizard</li> <li>Threatened fauna habitat</li> <li><span style="border: 1px solid blue; border-style: dashed; display: inline-block; width: 15px; height: 10px; margin-right: 5px;"></span> Koala</li> <li><span style="border: 1px solid pink; border-style: dashed; display: inline-block; width: 15px; height: 10px; margin-right: 5px;"></span> Pink-tailed Worm Lizard and Golden Sun Moth</li> </ul> | <ul style="list-style-type: none"> <li>Fauna survey effort</li> <li><span style="color: blue; font-size: 12px; margin-right: 5px;">●</span> Koala scat search</li> <li><span style="color: yellow; font-size: 12px; margin-right: 5px;">▼</span> Koala call playback / Spotlight</li> <li><span style="color: pink; font-size: 12px; margin-right: 5px;">✦</span> Diurnal reptile search</li> <li><span style="color: pink; font-size: 12px; margin-right: 5px;">✦</span> Nocturnal reptile search</li> </ul> |
|--|--|---|---|

**Notes:**  
 - Field data collected by nghenvironmental field staff (October 2012)  
 - Development envelopes provided by QCC  
 - Base map sourced from ESRI Online © 2010 Microsoft Corporation and its data suppliers

0 0.25 0.5 Kilometres

A3 @ 1:12500  
 Ref: 4733 - 14  
 Author: DM

**ngh environmental**

www.nghenvironmental.com.au