



GLIDER SURVEYS - October 2015

Ellerton Drive extension


- Trap locations October 2015
- Stag watching locations
- Property boundary - 35 Lonergan Drive
- Subject site
- Study area
- Cadastre

0 20 40 Metres

A3 @ 1:950
 Ref: 6134
 Author: JB

ngh environmental

www.nghenvironmental.com.au



Notes:
 - Footprint and Cadastre data courtesy QCC
 - Aerial imagery supplied by QCC 2012
 - Field data collected by NGH Environmental
 June - July 2015



GLIDER SURVEYS - November 2015

Ellerton Drive extension

- ★ Sugar Glider observations (spotlighting)
- Stagwatching locations
- Trap locations Nov 2015
- Subject site
- SIS study area

Notes:
 - Footprint data courtesy QCC
 - Aerial imagery supplied by QCC 2012
 - Field data collected by NGH Environmental
 November 2015

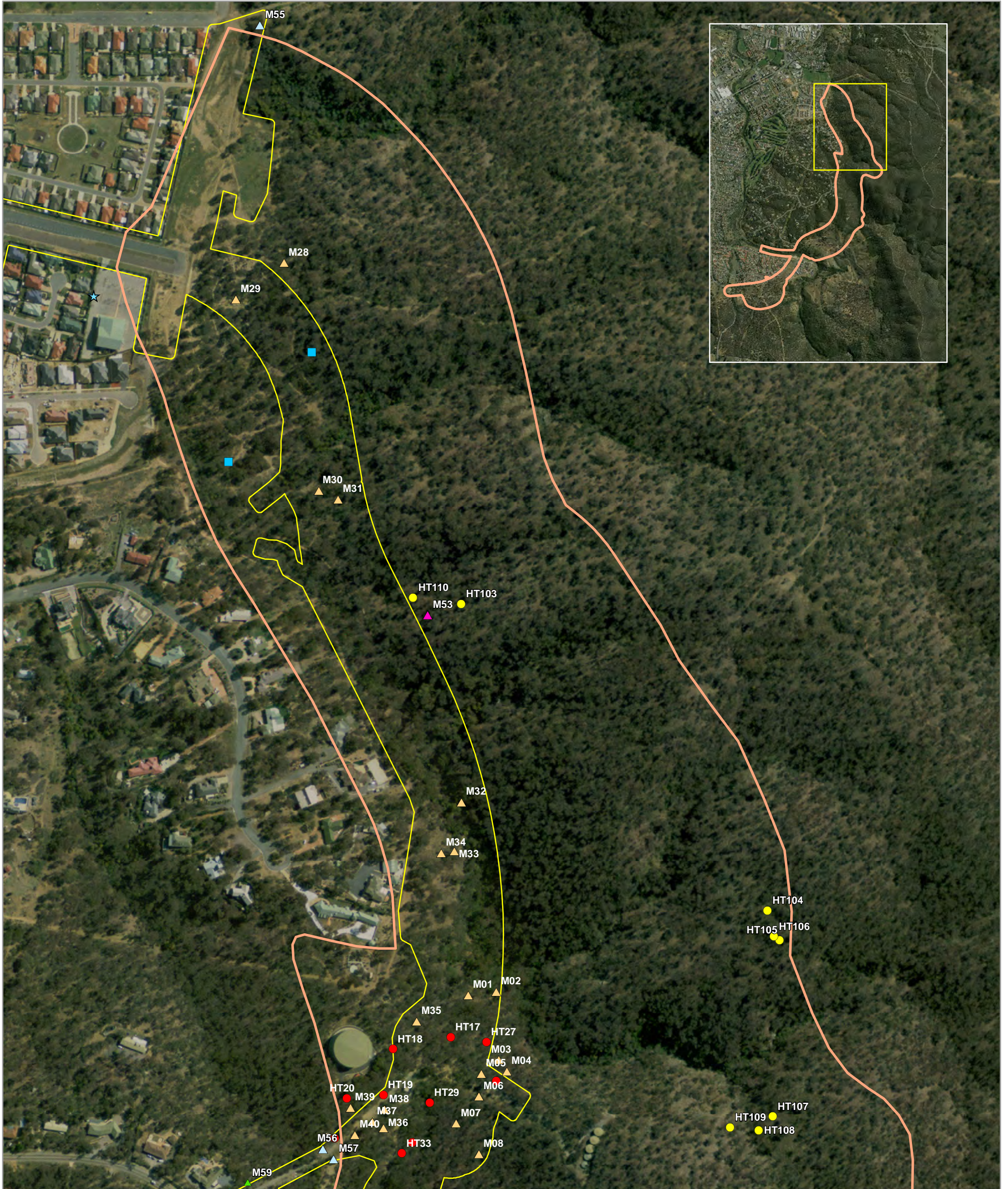
0 100 200 Metres

A3 @ 1:12500
 Ref: 6134
 Author: JB

ngh environmental

www.nghenvironmental.com.au

B.2 FAUNA RESULTS



FAUNA SURVEY RESULTS (NORTH)

Ellerton Drive extension

- | | | | |
|----------------------|-------------------------|-------------------------|---------------------|
| Study area | Threatened fauna | Habitat features | 2015 survey |
| Revised subject site | 2012 survey | 2012 survey | Hollow-bearing tree |
| Gang-gang Cockatoo | Hollow-bearing tree | Termite mound | Termite mound |
| Scarlet Robin | Termite mound | 2016 survey | Hollow-bearing tree |
| 2013 survey | 2013 survey | Hollow-bearing tree | Termite mound |
| Gang-gang Cockatoo | Hollow-bearing tree | Termite mound | Termite mound |
| Speckled Warbler | Termite mound | | |

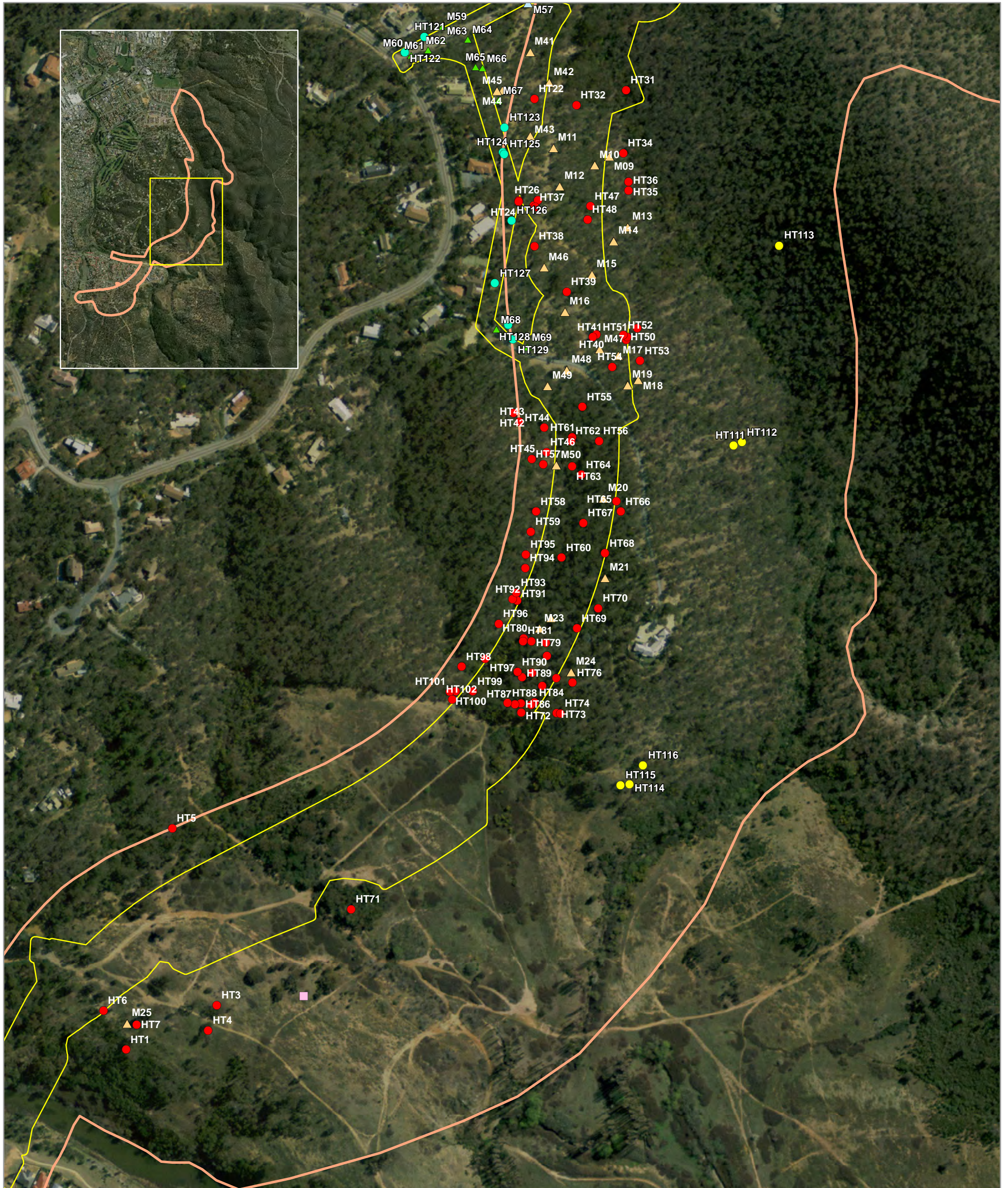
Notes:
 - Data collected by nghenvironmental (October 2012 - March 2015)
 - Development footprint and aerial imagery provided by QCC

0 50 100 Metres

A3 @ 1:4200
 Ref: 4733 - 7a
 Author: JB

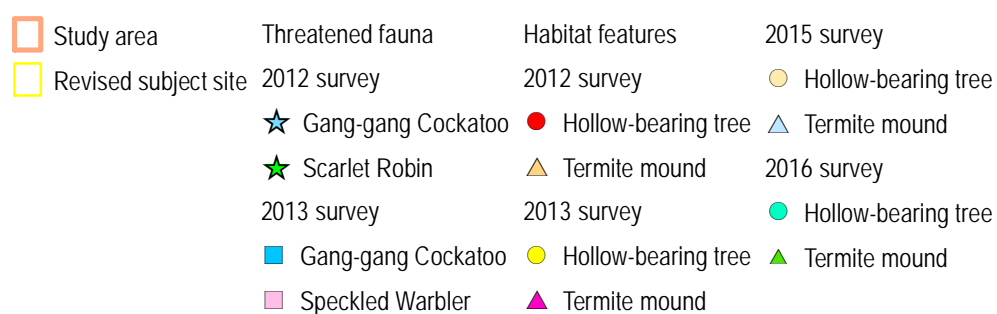
ngh environmental

www.nghenvironmental.com.au



FAUNA SURVEY RESULTS (CENTRAL)

Ellerton Drive extension



Notes:
 - Data collected by nghenvironmental (October 2012 - March 2015)
 - Development footprint and aerial imagery provided by OCC

0 50 100 Metres

A3 @ 1:4200
 Ref: 4733 - 7b
 Author: JB

ngh environmental

www.nghenvironmental.com.au



FAUNA SURVEY RESULTS (SOUTH)

Ellerton Drive extension

| | | | |
|----------------------|-------------------------|-------------------------|---------------------|
| Study area | Threatened fauna | Habitat features | 2015 survey |
| Revised subject site | 2012 survey | 2012 survey | Hollow-bearing tree |
| Gang-gang Cockatoo | Hollow-bearing tree | Termite mound | Termite mound |
| Scarlet Robin | Termite mound | 2016 survey | Hollow-bearing tree |
| 2013 survey | 2013 survey | Hollow-bearing tree | Termite mound |
| Gang-gang Cockatoo | Hollow-bearing tree | Termite mound | |
| Speckled Warbler | Termite mound | | |

Notes:
 - Data collected by nghenvironmental (October 2012 - March 2015)
 - Development footprint and aerial imagery provided by QCC

0 50 100 Metres

A3 @ 1:4200
 Ref: 4733 - 7c
 Author: JB

ngh environmental

www.nghenvironmental.com.au



FAUNA HABITAT TYPES

Ellerton Drive extension

| | | |
|----------------------|---------------------------|------------------------------|
| Study area | Fauna habitat type | Fauna habitat quality |
| Revised subject site | Disturbed | Good |
| | Dry grass forest | Moderate |
| | Dry shrub forest | Poor |
| | Grassland | |
| | Riverine | |
| | Shrubland | |
| | Woodland | |

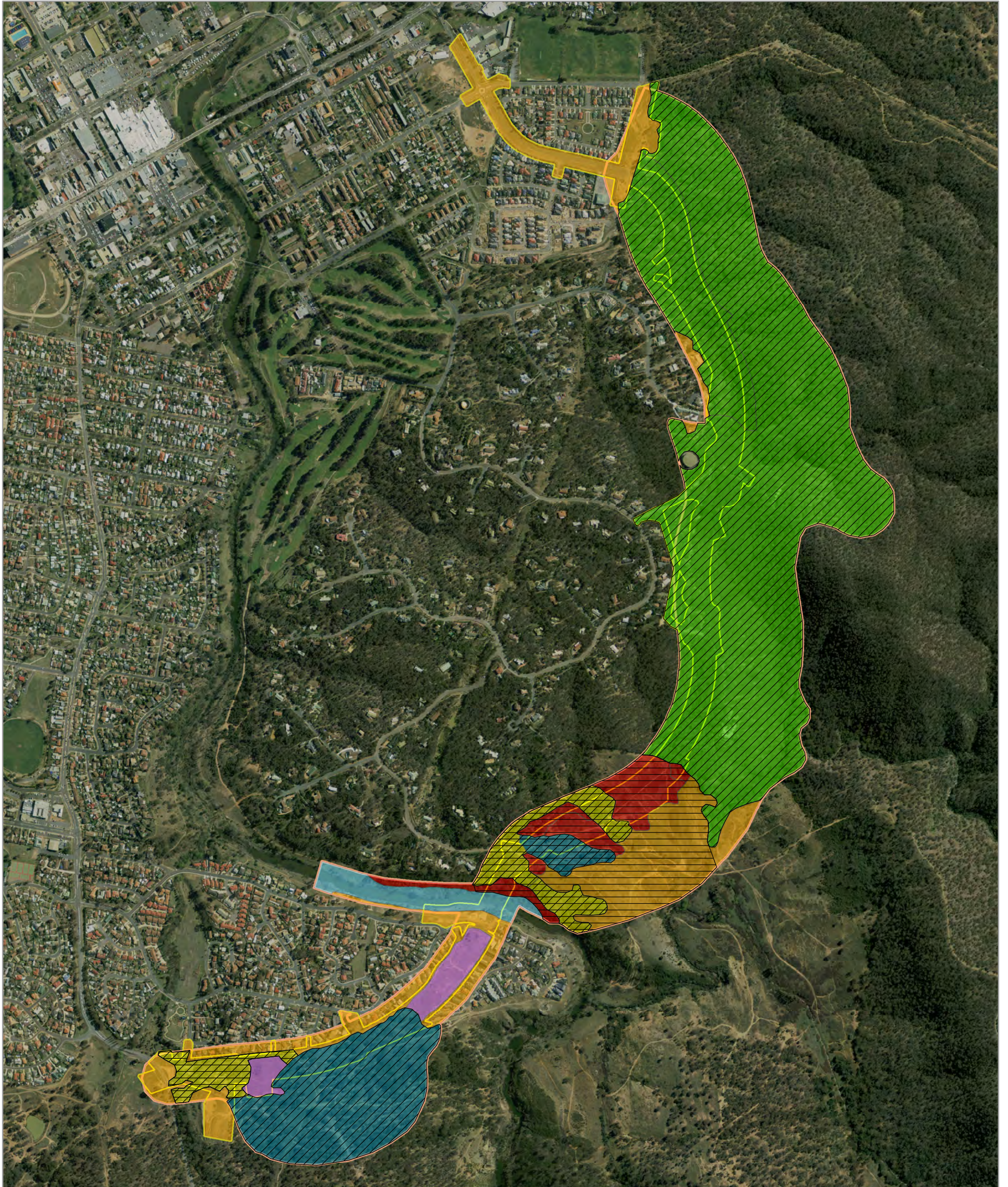
Notes:
 - Data collected by nghenvironmental (October 2012)
 - Development footprint and aerial imagery provided by QCC

0 125 250 Metres

A3 @ 1:11500
 Ref: 4733 - 6
 Author: JB

ngh environmental

www.nghenvironmental.com.au



SUBJECT SPECIES HABITAT - DIAMOND FIRETAIL AND SCARLET AND HOODED ROBIN

Ellerton Drive extension

- | | | |
|----------------------|---------------------------|--------------------------------|
| Study area | Fauna habitat type | Subject species habitat |
| Revised subject site | Disturbed | Diamond Firetail |
| | Dry grass forest | Scarlet and Hooded Robin |
| | Dry shrub forest | |
| | Grassland | |
| | Riverine | |
| | Shrubland | |
| | Woodland | |

Notes:
 - Data collected by nghenvironmental (October 2012)
 - Development footprint and aerial imagery provided by QCC

0 125 250 Metres

A3 @ 1:11500
 Ref: 4733 - 9-1
 Author: JB

ngh environmental

www.nghenvironmental.com.au



SUBJECT SPECIES HABITAT - PINK-TAILED WORM LIZARD, GOLDEN SUN MOTH AND ROSENBERGS GOANNA

Ellerton Drive extension

- | | | |
|----------------------|---------------------------|---|
| Study area | Fauna habitat type | Subject species habitat |
| Revised subject site | Disturbed | Pink-tailed Worm Lizard and Golden Sun Moth |
| | Dry grass forest | Rosenbergs Goanna |
| | Dry shrub forest | Rosenbergs Goanna (Important habitat) |
| | Grassland | |
| | Riverine | |
| | Shrubland | |
| | Woodland | |

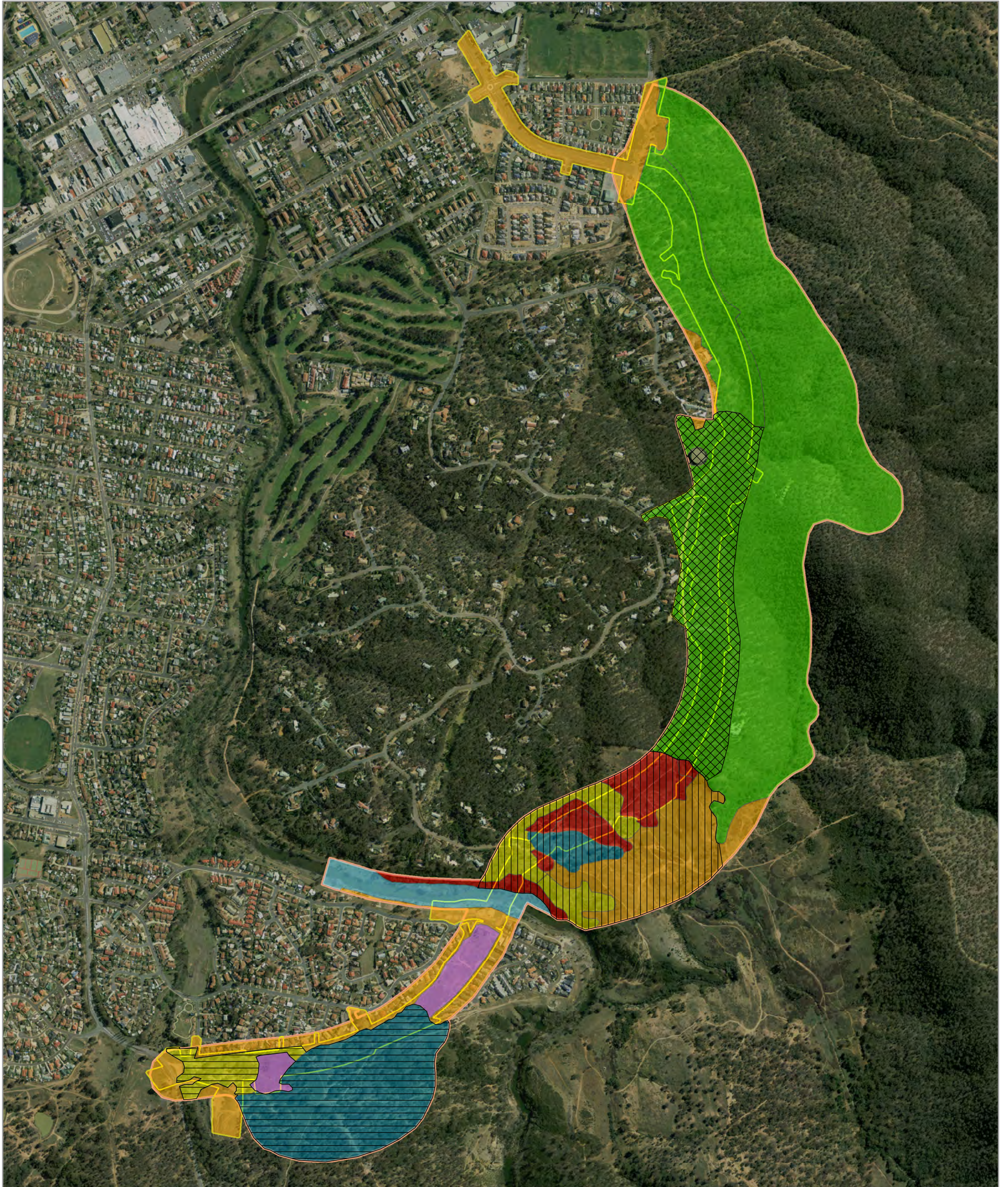
0 125 250 Metres

A3 @ 1:11500
Ref: 4733 - 9-2
Author: JB

ngh environmental

www.nghenvironmental.com.au

Notes:
- Data collected by nghenvironmental (October 2012)
- Development footprint and aerial imagery provided by QCC



SUBJECT SPECIES HABITAT - BROWN TREECREEPER, GANG-GANG COCKATOO AND SPECKLED WARBLER

Ellerton Drive extension

| Study area | Fauna habitat type | Subject species habitat |
|------------|--------------------|--|
| | Disturbed | Brown Treecreeper |
| | Dry grass forest | Gang-gang Cockatoo (important habitat) |
| | Dry shrub forest | Speckled Warbler (important habitat) |
| | Grassland | |
| | Riverine | |
| | Shrubland | |
| | Woodland | |

Gang-gang Cockatoo, Speckled Warbler, Koala, Eastern False Pipistrelle and Eastern Bent-wing Bat could occur in all habitat types. However, habitat of specific importance for breeding has been highlighted for selected species.

Notes:
 - Data collected by nghenvironmental (October 2012)
 - Development footprint and aerial imagery provided by OCC

0 125 250 Metres

A3 @ 1:11500
 Ref: 4733 - 9-3
 Author: JB

ngh environmental

www.nghenvironmental.com.au