

Dave Maynard

Senior Ecologist

NGH Environmental



Species Impact Statement

Context

- NGH Environmental – who are we?
- Assessment pathways in NSW
- What is a Species Impact Statement (SIS)?

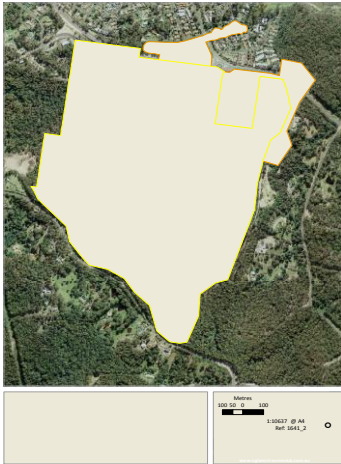
Assessment outcomes and mitigation

- Key impacts and issues
- Managing the impacts: mitigate and offset

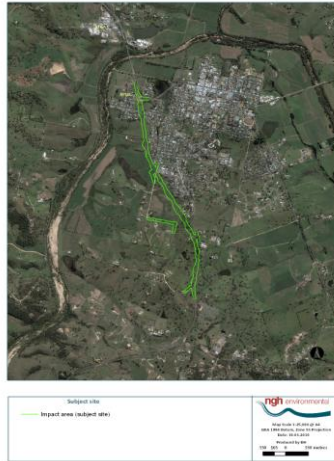
Who are we?

- Specialists in biodiversity (ecological) assessments in NSW
- Carried out many other ecological assessments for major road projects

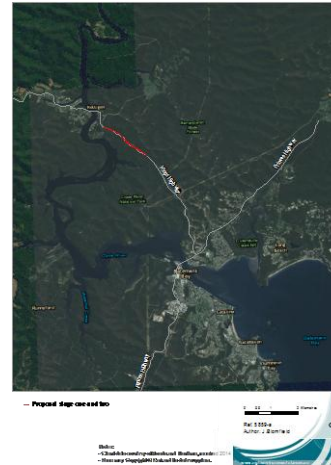
Who are we?



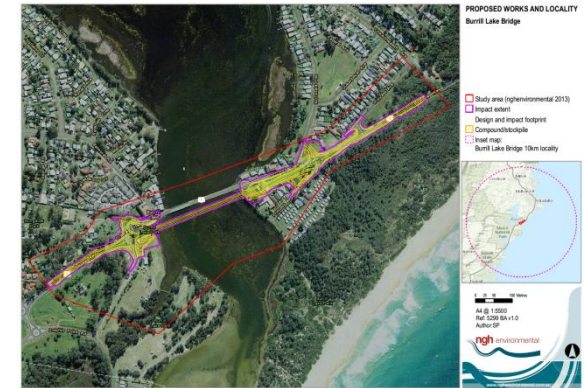
Surf Beach
Species Impact
Statement



Bega bypass
Biodiversity
assessment, REF



Kings Highway
biodiversity
assessments, REF



Burrill Lake Bridge
biodiversity
assessment, REF

Ecological assessment in NSW

Preliminary Biodiversity Assessment:

- More general assessment
- Determine if a significant impact is likely

Secondary or specific threatened species assessment: Species Impact Statement

- Systematic, rigorous and transparent
- Guided by legislation and approval from the Office of Environment and Heritage required for development approval



The Species Impact Statement

- Purpose: identify key issues and mitigation measures
- Specific: subject species identified by Office of Environment and Heritage.
- More than 120 hours of surveys (plants and vegetation: 66 hours, animals: 62 hours)
- Surveys targeted but ALL species are recorded

Key impacts and issues

Significant impacts on:

- Box-Gum Woodland EEC
 - Rosenberg's Goanna
 - Speckled Warbler
- Direct clearing of Box Gum Woodland
 - Clearing important habitat resources: hollow-bearing trees, termite mounds
 - Clearing of important breeding habitat
 - Fauna impacts



Mitigation and offset strategies

Mitigation

- Minimise the impacts
- Manage the impacts



Offset residual impacts

- Offset strategy being developed in consultation with the Office of Environment and Heritage
- Provides long term protection: permanently