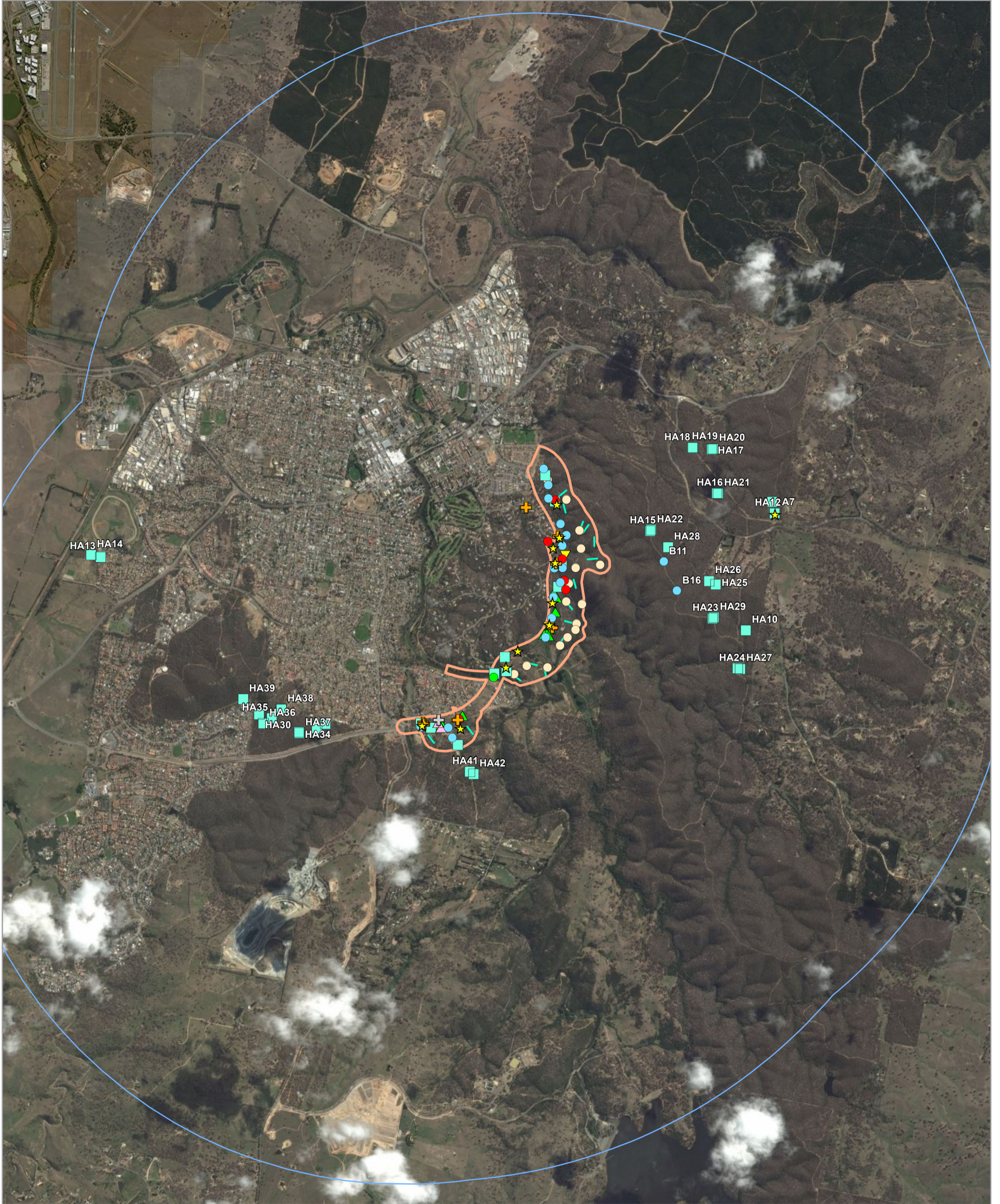
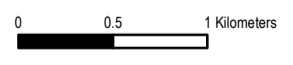


# Ellerton Drive extension - Fauna survey effort within the locality



- |                          |                                 |                             |
|--------------------------|---------------------------------|-----------------------------|
| Study area               | Koala scat search               | Bird census                 |
| 5km buffer               | Koala call playback / Spotlight | Habitat transect assessment |
| 2012 fauna survey effort | Diurnal reptile search          | Stagwatch                   |
| Anabat                   | Nocturnal reptile search        | Stag watch                  |
| Bird census              | Stag watch                      | Habitat quadrat assessment  |
| Frog census              | Habitat quadrat assessment      |                             |

**Notes:**  
 - Field data collected by nghenvironmental field staff (October 2012)  
 - Development envelope and aerial imagery provided by QCC  
 - Base map sourced from ESRI Online © 2010 Microsoft Corporation and its data suppliers



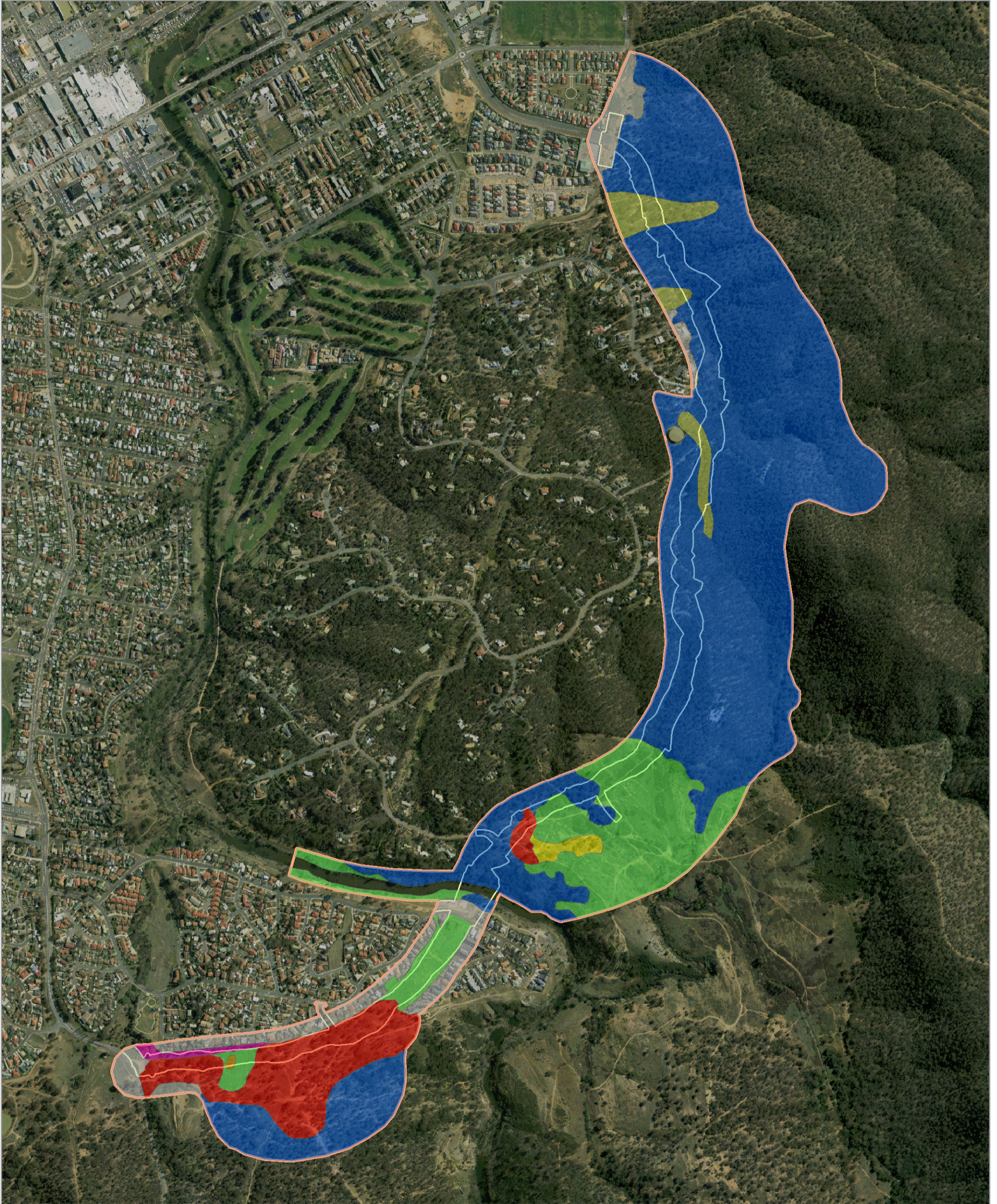
A3 @ 1:40000  
 Ref: 4733 - 5-2  
 Author: DM



# APPENDIX E SURVEY RESULTS MAPS

## E.1 FLORA

# Ellerton Drive extension - Vegetation types within the study area



## Vegetation types

- South Eastern Tablelands Dry Shrub/Grass/Herb Forest (Box-Gum Woodland, CEEC EPBC)
- South Eastern Tablelands Dry Shrub/Grass/Herb Forest (Box-Gum Woodland, EEC TSC)
- Tablelands Acacia/Grass/Herb Dry Forest
- Tablelands Dry Shrub/Tussock Grass Forest (Dry Forest)
- Planted native vegetation
- Silver Wattle
- Exotic vegetation
- Disturbed

Study area

Subject site

0 125 250 Meters

A3 @ 1:11000  
Ref: 4733 - 3-1  
Author: DM

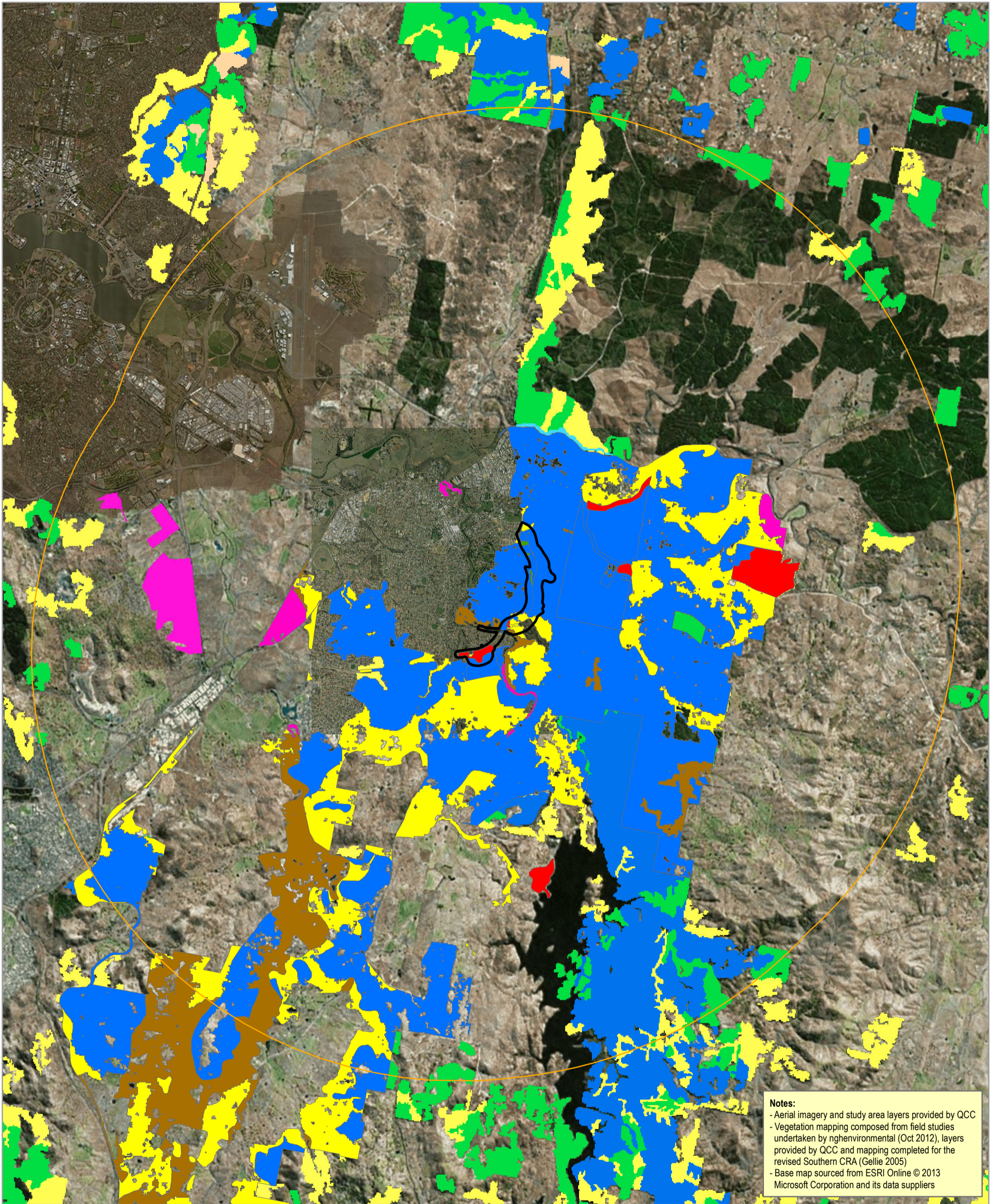
**ngh** environmental



## Notes:

- Field data collected by nghenvironmental field staff (October 2012)
- Aerial imagery and development envelope provided by QCC

# Ellerton Drive extension - Vegetation types within the locality



**Notes:**  
 - Aerial imagery and study area layers provided by QCC  
 - Vegetation mapping composed from field studies undertaken by nghenvironmental (Oct 2012), layers provided by QCC and mapping completed for the revised Southern CRA (Gellie 2005)  
 - Base map sourced from ESRI Online © 2013 Microsoft Corporation and its data suppliers

- Study area
- 10km Buffer
- Vegetation types**
- South Eastern Tablelands Dry Shrub/Grass/Herb Forest (Box-Gum Woodland, EPBC)
- South Eastern Tablelands Dry Shrub/Grass/Herb Forest (Box-Gum Woodland, TSC)
- Tablelands Acacia/Grass/Herb Dry Forest
- Tablelands Dry Shrub/Tussock Grass Forest (Dry Forest)

- Northern Slopes Dry Grass Woodland (Box-Gum Woodland, TSC)
- Eastern Tableland Dry Shrub/Grass Forest
- Riparian Acacia Shrub/Grass/Herb Forest
- Tableland Dry Herb/Grass Woodland
- Widespread Tablelands Dry Shrub Grass Forest
- Grassland Woodland Mosaic
- Native Grassland

0 1 2 Kilometres

A3 @ 1:85000  
 Ref: 4733 - 3-2  
 Author: DM

**ngh environmental**

