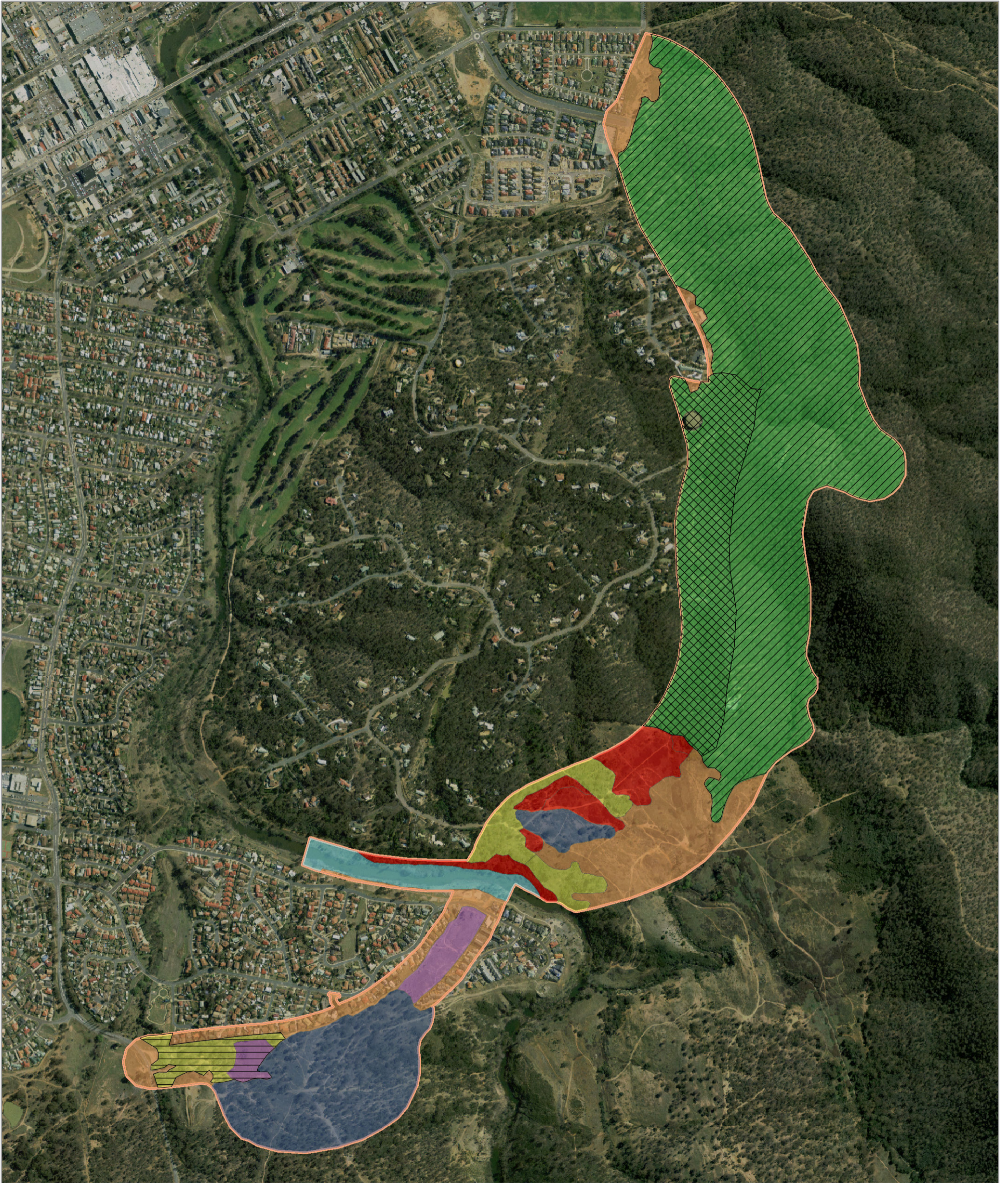


# Ellerton Drive extension - Subject species habitat - Pink-tailed Worm Lizard, Golden Sun Moth and Rosenbergs Goanna



Study area	Fauna habitat type	Subject species habitat
	Disturbed	Pink-tailed Worm Lizard and Golden Sun Moth
	Dry grass forest	Rosenbergs Goanna
	Dry shrub forest	Rosenbergs Goanna (Important habitat)
	Grassland	
	Riverine	
	Shrubland	
	Woodland	

0 125 250 Meters

A3 @ 1:11000  
 Ref: 4733 - 9-2  
 Author: DM

**ngh** environmental



**Notes:**  
 - Field data collected by nghenvironmental field staff (October 2012)  
 - Development envelope and aerial imagery provided by QCC

[www.nghenvironmental.com.au](http://www.nghenvironmental.com.au)

# Ellerton Drive extension - Subject species habitat - Brown Treecreeper, Gang-gang Cockatoo and Speckled Warbler



Study area	Fauna habitat type	Subject species habitat
	Disturbed	Brown Treecreeper
	Dry grass forest	Gang-gang Cockatoo (important habitat)
	Dry shrub forest	Speckled Warbler (important habitat)
	Grassland	
	Riverine	
	Shrubland	
	Woodland	
		Gang-gang Cockatooe, Speckled Warbler, Koala Eastern False Pipistrelle and Eastern Bent-wing Bat could occur in all habitat types. However, habitat of specific importance for breeding has been highlighted for selected species)

0 125 250 Meters

A3 @ 1:11000  
Ref: 4733 - 9-3  
Author: DM

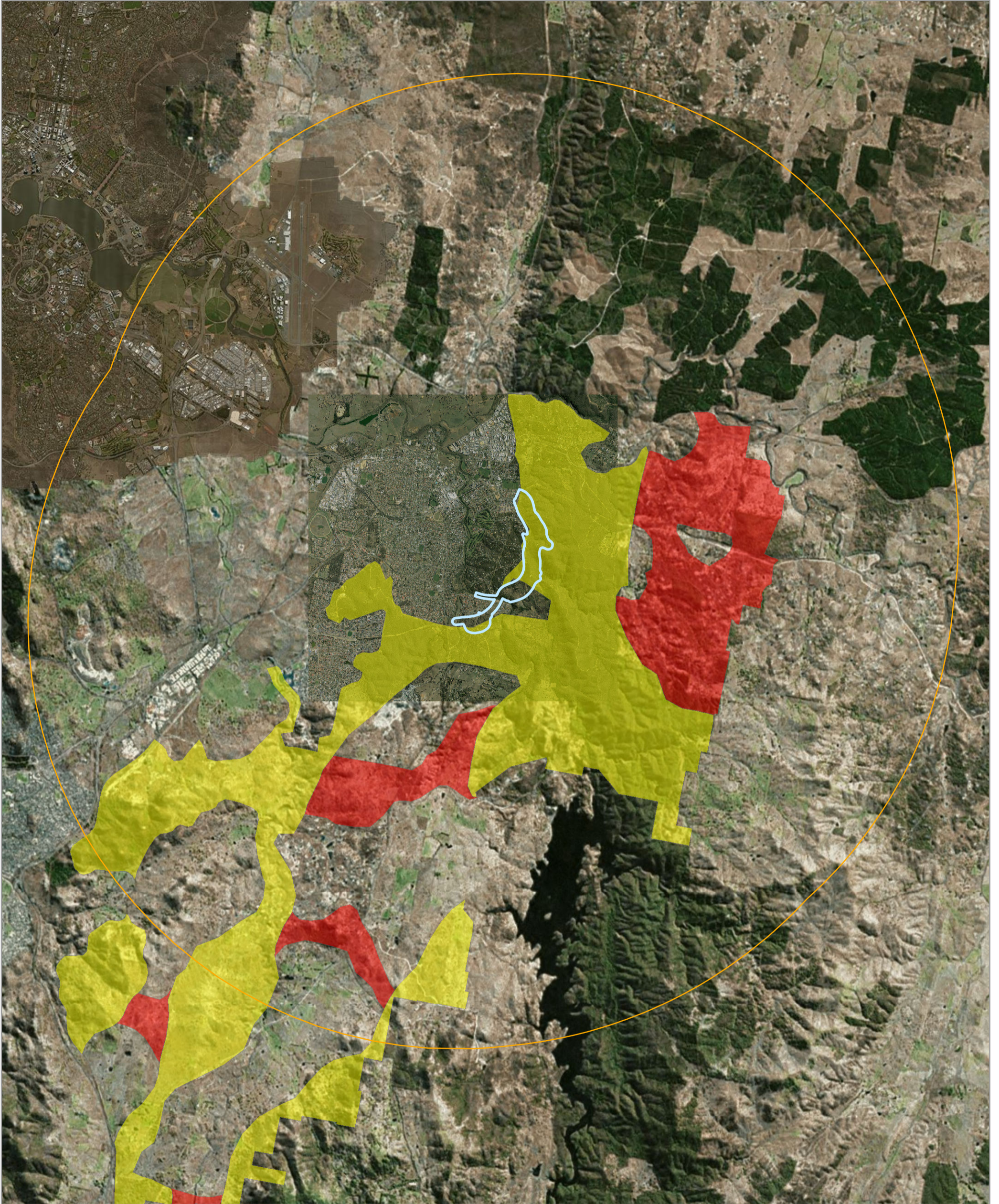
**ngh** environmental



**Notes:**  
- Field data collected by nghenvironmental field staff (October 2012)  
- Development envelope and aerial imagery provided by QCC

www.nghenvironmental.com.au

# Ellerton Drive extension - Biolinks within the locality



-  Study area
-  10km Buffer
- Biolinks**
-  Local
-  Regional

**Notes:**  
- Aerial imagery and study area layers provided by QCC  
- Biolink layer provided by QCC  
- Base map sourced from ESRI Online © 2013  
Microsoft Corporation and its data suppliers

0 1 2 Kilometres

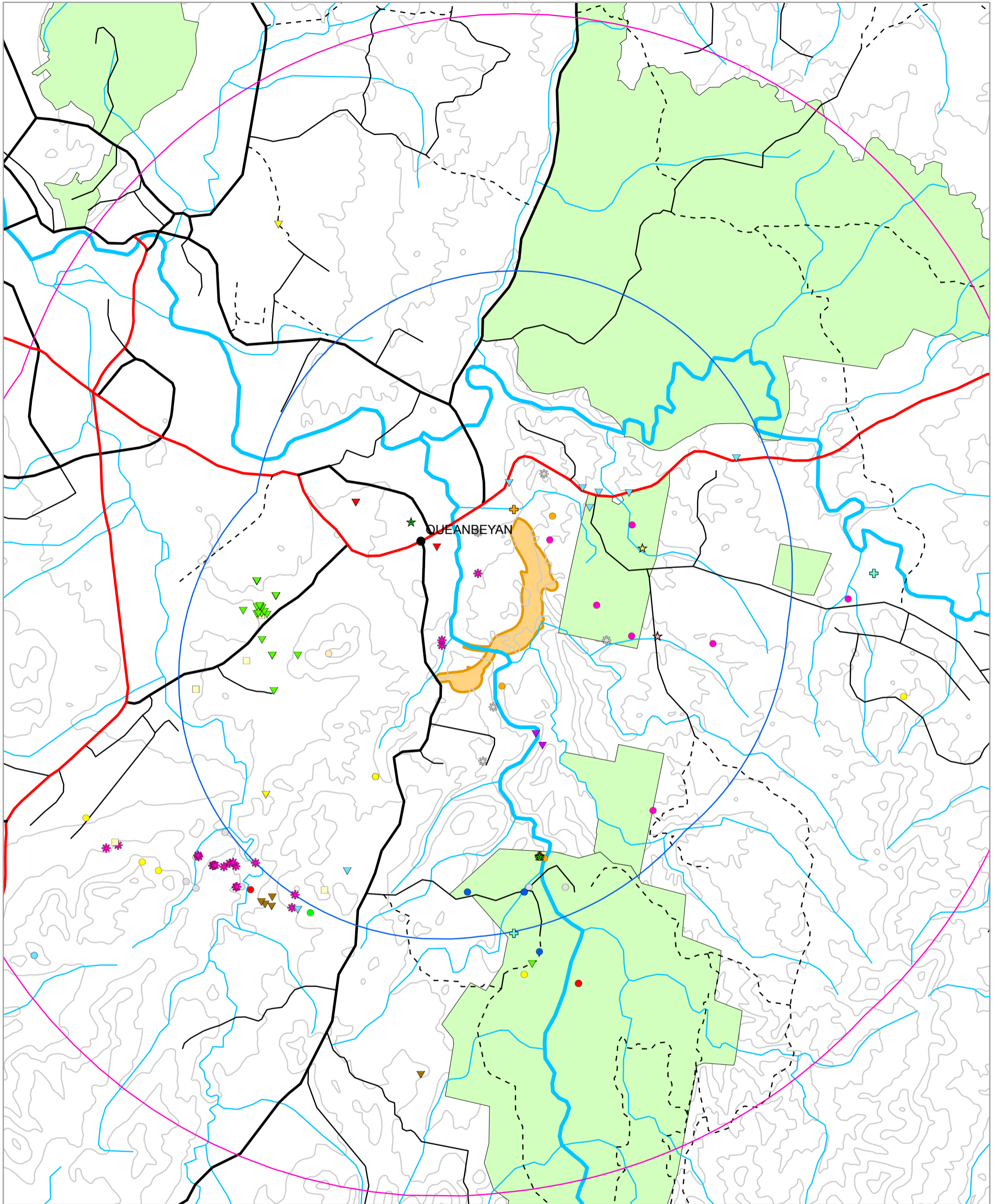
A3 @ 1:85000  
Ref: 4733 - 11  
Author: DM

 ngh environmental



## APPENDIX F THREATENED SPECIES RECORDS

# Ellerton Drive extension - Threatened species records within 10km of the study area



- Study area
- 5km Buffer
- 10km Buffer
- Reserves
- Contours 50m
- Water courses
- Major watercourse
- Minor watercourse

- Roads
- Principal Road
- Secondary Road
- Minor Road
- Track
- Threatened flora
- Caladenia tessellata
- Leucochrysum albicans var. tricolor
- Pomaderris pallida
- Rutidosia leptorrhynchoides
- Swainsona recta
- Swainsona sericea

- Threatened fauna records
- Golden Sun Moth
- Green and Golden Bell Frog
- Southern Bell Frog
- Eastern Bentwing-bat
- Eastern False Pipistrelle
- Southern Myotis
- Koala
- Spotted-tailed Quoll
- Rutidosia leptorrhynchoides
- Swainsona recta
- Swainsona sericea
- Rosenberg's Goanna

- Brown Treecreeper (eastern subspecies)
- Diamond Firetail
- Flame Robin
- Gang-gang Cockatoo
- Hooded Robin (south-eastern form)
- Little Eagle
- Scarlet Robin
- Speckled Warbler
- Spotted Harrier
- Varied Sittella
- White-fronted Chat

0 1 2 Kilometres

A3 @ 1:70000  
Ref: 4733 - 10  
Author: DM

ngh environmental



**Notes:**  
- Threatened Species locations sourced from Bionet - NSW Wildlife Atlas 2012  
- Topographic data Geoscience Australia © 2006

www.nghenvironmental.com.au

## APPENDIX G PLATES