

Future cemetery needs

QPRC



Background

- Based on current interments and take up of reservations, Queanbeyan Cemetery has approximately 5 years service life.
- Queanbeyan's population growth
 - Growing from 41,000 to >55000 in 15 years
 - Approx 69% projected increase in retirement ages demographic
 - Approx 16,000 projected residents > 50 yrs in 15 years
 - Queanbeyan's growth centres are to the south, Googong and Sth Jerrabomberra/Tralee
- ACT impact
 - Current service life of ACT's three Cemeteries is 8 years
 - New cemetery proposed for Mugga Lane – currently on hold.
 - ACT projected population is 500,000 by 2050
 - ACT increase in persons over 65 to increase 21% by 2050



Background



- First workshop of Queanbeyan City Council 2009 – Initiated Project
- Proposal to find a location for a new cemetery was included in Queanbeyan City Council's Delivery Programs 2009-12 and 2013-17, community were consulted on content of Delivery Plans.
- Council worked with the NSW Government agency, Cemeteries and Crematoria NSW to find sites and place the issue onto the NSW agenda.
- Further Workshop of Queanbeyan City Council 2015 – Confirmed preferred area of search based on population growth.
- 26 August 2015 Council meeting, 310/15 **RESOLVED (Cregan/Whelan)**
That Council authorise the General Manager to approach relevant property owners to secure options over land identified for potential cemetery purposes, to allow formal planning to proceed.
- 22 February 2017 Council Meeting, 067/17 **RESOLVED (Overall)**
That Council enter into a contract to purchase land at 1187 – 1241 Old Cooma Road, Royalla



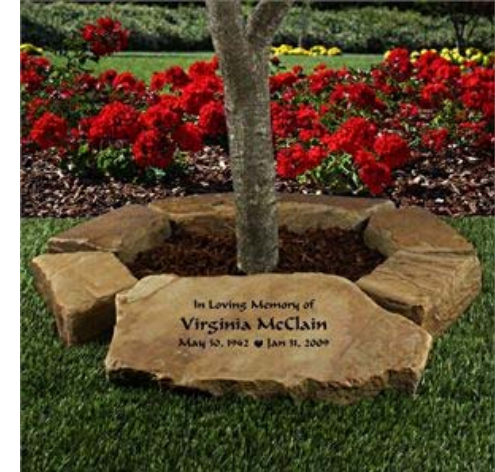
Site selection criteria

- Suitable land availability
- Proximity to city and urban areas, 10-15km radius
- Allow for future urban growth
- Proximity to main roads
- Able to accommodate separated exit and entrance
- Minimum site of 35 hectares of memorial park, including buffer zones, access roads and facilities.
- Topography predominately flat to slight undulation
- Consistent subsoil not containing large areas of rock above 3.5m depth
- Outside 100-year flood zone preferred
- Low water tables desirable ideally minimum 3.5 metres
- Access to services, irrigation water, electricity and potentially gas
- Access to irrigation water and potential for capturing runoff in dams
- Environmental sustainability



What constitutes a Memorial Garden

- Well laid out property with well spaced series of “rooms” and park like look
- Extensive tree planting
- Potential landscaped gardens, eg. Rose Garden, Camellia Gardens etc
- Possible water features
- Minimum 20m wide perimeter buffer tree planting
- Restoration of environment, creek, remnant vegetation
- Landscaped areas for niche walls
- Facilities for staff and visitors
- Access drives and onsite parking



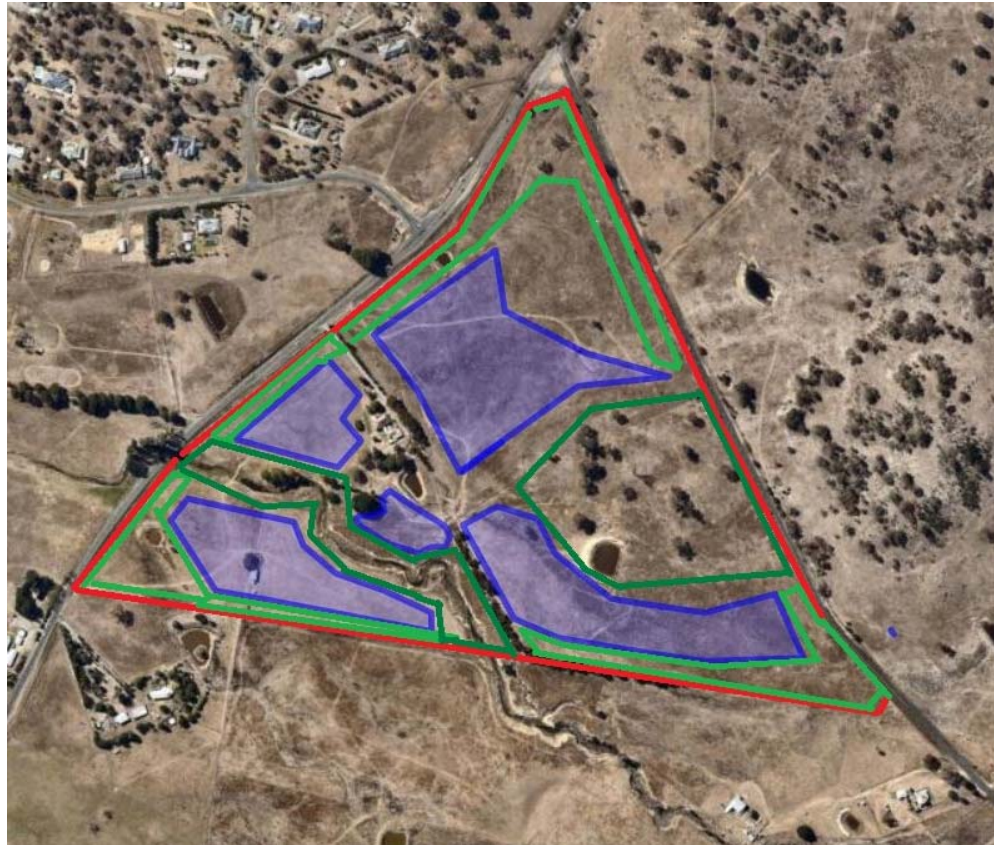
Very important to create a beautiful setting for families to visit



Proposed location



Proposed Royalla site



Site Boundary
36 Ha total

Potential Use
16 Ha

Buffer 5 Ha

Environmental
Restoration 6 Ha



Next steps

- Prepare a Planning Proposal for consideration by the Department of Planning
- Seek a Gateway Approval, from the Minister for Planning, to amend the Queanbeyan 2012 LEP
- If Gateway determination is issued, engage consultants to carry out necessary studies possibly including:- Further Community Consultation
 - Flora and Fauna
 - Traffic
 - Visual Amenity
 - Geotechnical
 - Hydrology
- Submit proposal and all necessary studies to the Department for Ministerial approval
- Develop concept designs – Further consultation
- Develop Business Plan
- Prepare Development Application – Further Consultation
- Submit DA to Regional Planning Panel – Further Consultation

