

Using recycled water



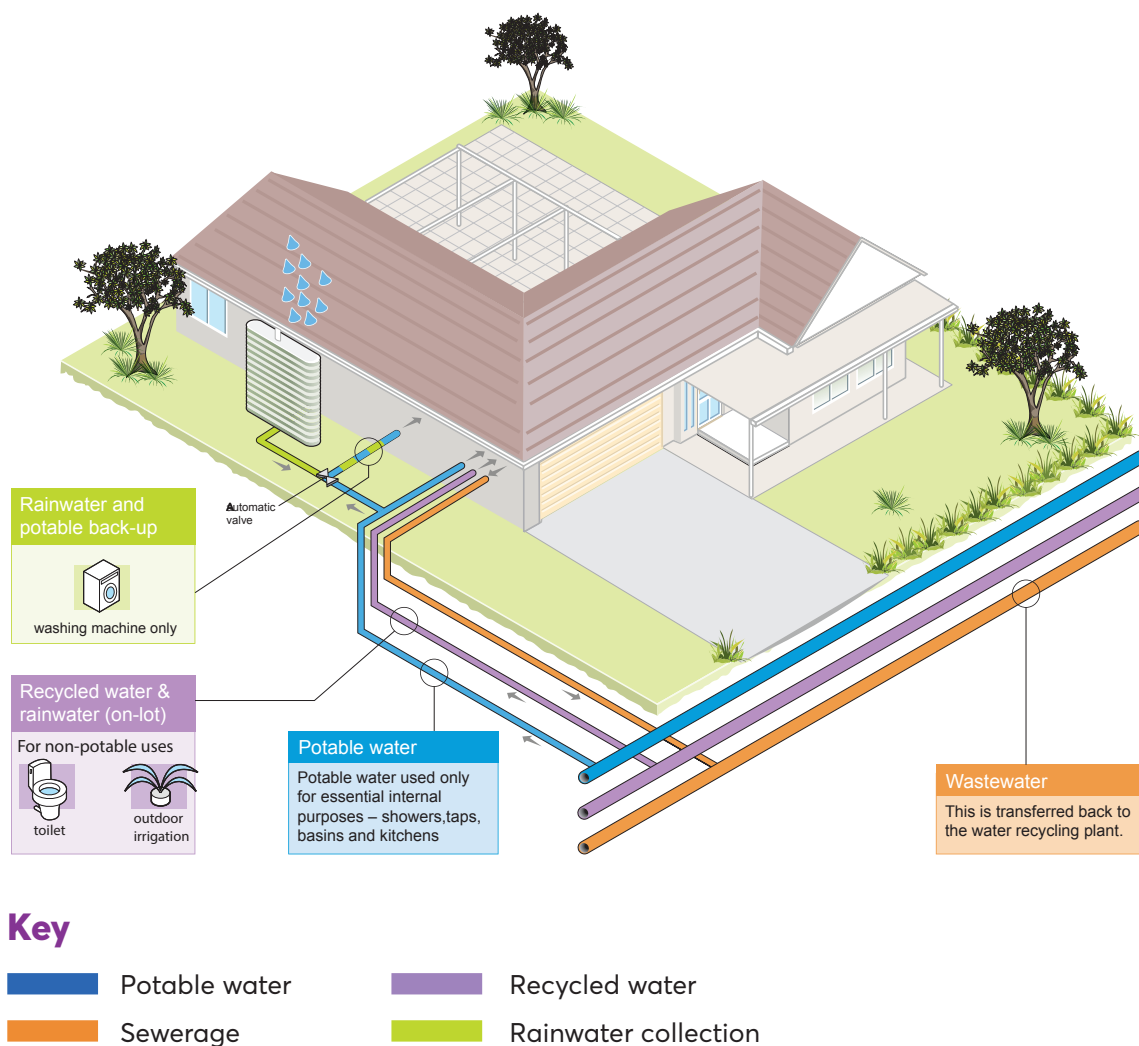
Water recycling around Australia

Water recycling is not a new concept in NSW and Australia. There are many other proven water recycling schemes around the country, including the Sydney Olympic Park Water Reclamation and Management Scheme, Barwon Water's Northern Water Plant in Victoria and the Rouse Hill Recycled Water System in Sydney. Some of these schemes have been in operation for over 15 years!

Homes, streetscapes and parklands at Googong are all part of the township's Integrated Water Cycle (IWC) system. Each water source - rainwater, recycled water, stormwater, wastewater and drinking water - is effectively used or reused for its own unique purpose.

Your home and/or business has access to both potable (drinking) and non-potable (non-drinking) water sources as shown in the diagram below.

While the recycled water pipe is purple, other pipes will not be colour coded.



WESTFAST

Why use recycled (non-drinking) water?

- It's good for the environment by keeping nutrients out of our creeks and rivers.
- It conserves precious drinking water.
- It's great for use on gardens.
- Connection to recycled water contributes to your BASIX score.

Water Uses

Our recycled water is treated to a high standard and there is a low risk of any negative health effects from approved uses. Therefore it's very important that you, your family and any visitors understand the difference between potable water (drinking water) and non-potable water, which should only be used for particular purposes.

What you CAN use recycled water for:

- ✓ Flushing toilets
- ✓ Watering lawns and gardens
- ✓ Washing cars, brickworks and windows
- ✓ Fighting Fires
- ✓ Watering your fruit and vegetable gardens*
*As a safeguard, ensure that all fruit and vegetables watered with recycled water are washed prior to eating
- ✓ Watering sportsfields and parks

What you CAN'T use recycled water for:

- ✗ Drinking
- ✗ Cooking and other kitchen uses
- ✗ Bathing (baths, showers and hand basins)
- ✗ Filling pools and spas
- ✗ Cooling systems
- ✗ Hot water systems
- ✗ Playing (sprinklers or filling water toys)
- ✗ Household cleaning, including washing machines