



Ordinary Meeting of Council

29 January 2025

**UNDER SEPARATE COVER
ATTACHMENTS**

ITEMS 9.1 TO 9.5

**QUEANBEYAN-PALERANG REGIONAL COUNCIL
ORDINARY MEETING OF COUNCIL**

ATTACHMENTS – 29 January 2025 Page i

| | | |
|----------|-----------------------------------------------------------------------------------------------------------------|-------------------------------------------------------------------------------------------------------------------|
| Item 9.1 | Demolition of Local Heritage Item - Jembaicumbene Bridges, Araluen Road, Reidsdale | |
| | <i>Attachment 1</i> | <i>Attachment 1 - Heritage Report - Eric Martin & Associates Architects.....2</i> |
| | <i>Attachment 2</i> | <i>Attachment 2 - Heritage Advisory Service Comments - Jembaicumbene Bridges Replacement.....21</i> |
| Item 9.2 | Warrigal Residents Committee Donation Request | |
| | <i>Attachment 1</i> | <i>Letter of Support from CEO Warrigal Care.....26</i> |
| | <i>Attachment 2</i> | <i>Request from Residents Committee28</i> |
| Item 9.4 | Renewal of Alcohol Restrictions in Local Government Area and Addition of New Area at 1 Farrer Place, Queanbeyan | |
| | <i>Attachment 1</i> | <i>NSW Dept of Planning and Environment - Alcohol-Free Zones and Alcohol Prohibited-Areas - Fact Sheet.....30</i> |
| | <i>Attachment 2</i> | <i>Monaro Police District - Request for 1 Farrer Place to be declared an alcohol-free area34</i> |
| Item 9.5 | Monaro Street Upgrade - Detailed Design | |
| | <i>Attachment 1</i> | <i>Monaro Street Upgrade - Landscape design - Option 139</i> |
| | <i>Attachment 2</i> | <i>Monaro Street Upgrade - Landscape design - Option 257</i> |

QUEANBEYAN-PALERANG REGIONAL COUNCIL

Council Meeting Attachment

29 JANUARY 2025

| | |
|--------------|---------------------------------------------------------------------------------------|
| ITEM 9.1 | DEMOLITION OF LOCAL HERITAGE ITEM - JEMBAICUMBENE BRIDGES, ARALUEN ROAD, REIDSDALE |
| ATTACHMENT 1 | ATTACHMENT 1 - HERITAGE REPORT - ERIC MARTIN & ASSOCIATES ARCHITECTS |

HERITAGE REPORT

on

JEMBAICUMBENE BRIDGE REPLACEMENT

Prepared by

Eric Martin & Associates

For

Queanbeyan-Palerang Regional Council



10/68 Jardine St
KINGSTON ACT 2604
Ph: 0262606395
Fax: 02 62606413
Email: ema@ema.com.au

ISSUE 1
24058
15 March 2024

CONTENTS

1.0 INTRODUCTION 3

2.0 CURRENT STATUS 3

3.0 DESCRIPTION/CONDITION 4

4.0 ASSESSMENT OF SIGNIFICANCE 6

5.0 RECOMMENDATIONS 6

ATTACHMENT 1 LEP CITATION

ATTACHMENT 2 PHOTOGRAPHS



1.0 INTRODUCTION

There is a proposal to replace the three bridges on Araluen Road Jembaicumbene. As a result, Queanbeyan-Palerang Regional Council (QPRC) have asked for clarification of the heritage significance of the bridges and provision of any recommendation associated with the proposed replacement.

This report has been prepared by Eric Martin AM of Eric Martin & Associates following a site inspection on 25th February 2024.

2.0 CURRENT STATUS

The three bridges on Araluen Road (refer to Figure 1) are listed on the QPRC Local Environment Plan (LEP) register (item I517) which includes the following statement of significance.

This item is representative of a class of wooden bridges constructed in Tallaganda Shire Council area and illustrates the development of a series of crossings at this point on the Creek.

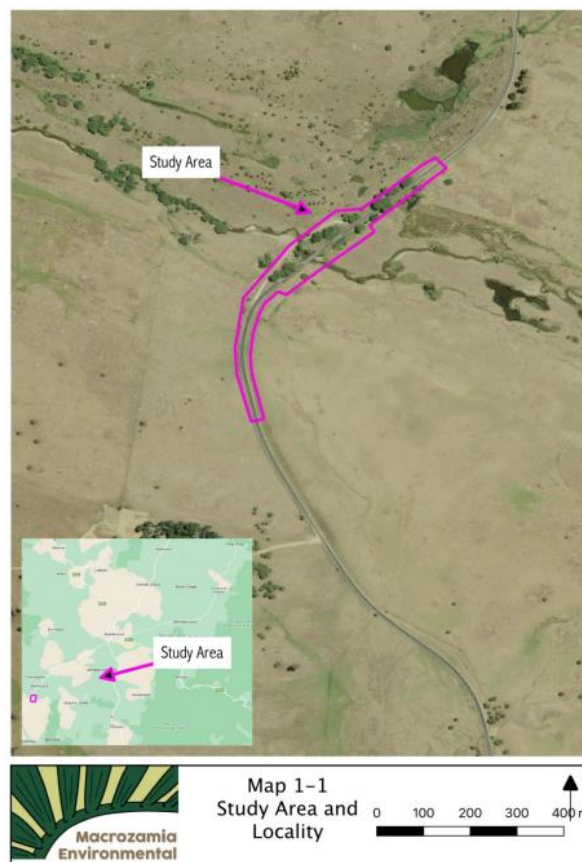


Figure 1: Location Plan

Source: Macrozamia, *Environmental Review of Environmental Factors Proposed Jembaicumbene Bridge Replacement Works*, October 2022

As part of the proposed replacement the following report has been prepared:

Macrozamia, *Environmental Review of Environmental Factors Proposed Jembaicumbene Bridge Replacement Works*, October 2022

Section 6 details heritage issues and includes Section 6.6.3 Safeguards & Mitigation Measures.



| Impact | Environmental Safeguards | Responsibility | Timing |
|-----------------------------------------------|-----------------------------------------------------------------------------------------------------------------------------------------------------------------------------------------------------------------------------------------------------------------------------------------------------------------------------------------------------|-----------------------|---------------|
| Demolition of the Jembaicumbene Creek Bridges | Prior to demolition council must undertake an assessment of the heritage values of the Jembaicumbene Creek Bridges and implement measures to document and preserve these values, measures may include detailed drawings, photography and videography, relocation/reassembly of parts of the structure for future appreciation or any other measure. | Council | Continuous |

3.0 DESCRIPTION/CONDITION

There are three bridges as per Figure 2 below.



Figure 2: Site Plan

Source: Google Images <https://www.google.com/maps/place/Jembaicumbene+Creek/@-35.5335784,149.7946634,257m/data=!3m1!1e3!4m6!3m5!1s0x6b16769f3b5a932f:0xa3ffb3b5ed14f07e!8m2!3d-35.5291562!4d149.7834334!16s%2Fg%2F11cig4yt6b?entry=ttu> Retrieved 14th March 2024 Annotated by Eric Martin & Associates

The bridges are timber with timber piles, 300mm x 150mm beam, pole beams, a spiking plate and timber planks. Timber handrails were added to each side and abutments were timber planks. The design was a standard type from 1935 as illustrated in Figure 3.



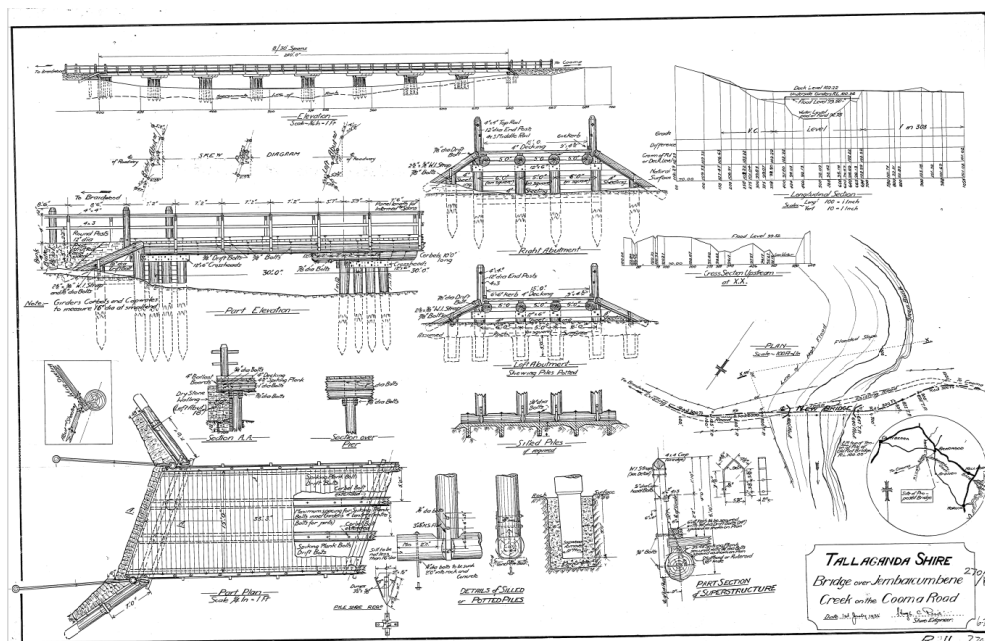


Figure 3: Bridge Design

Source: Pip Giovannelli

The changes to the bridges include:

- Addition of longitudinal timber planks along the top of each bridge (refer to Figure 4);
- Addition of gabions to stabilise the abutments (refer to Figure 5);
- Replacement of some piles or part of piles with treated timber (refer to Figure 6);
- Addition of at least one steel I-beam to stabilise the central section of Bridge 1 (refer to Figure 7);
- Repositioning of some piles (refer to Figure 11); and
- Addition of some propping and beams (refer to Figure 9).



Figure 4: IMG_1857

Source: Eric Martin & Associates



Figure 5: IMG_1862

Source: Eric Martin & Associates



Figure 6: IMG_1888

Source: Eric Martin & Associates





Figure 7: IMG_1899

Source: Eric Martin & Associates



Figure 8: IMG_1898

Source: Eric Martin & Associates



Figure 9: IMG_1900

Source: Eric Martin & Associates

Further photographs are included in Attachment 2.

The condition of the top decking is poor with holes and rotten sections (refer to Figure 10 and Figure 11).



Figure 10: IMG_1870

Source: Eric Martin & Associates



Figure 11: IMG_1892

Source: Eric Martin & Associates

The condition of the earlier timber planks is unknown but the top decking was probably added due to the poor condition of the original planks.

There is ongoing deterioration of the timber structure but it appears in reasonable condition. However, it is difficult to inspect given the restricted access at present.

4.0 ASSESSMENT OF SIGNIFICANCE

The three bridges were an important part of the infrastructure and opening up the rural areas of New South Wales. The design was a typical and practical detail widely used in New South Wales in the 1930s but few remain and even fewer remain with original fabric.

All three bridges have been modified, especially Bridge 3 but the structural system, design and a reasonable amount of original fabric remain in various condition.

The condition has deteriorated and presents a risk to users.

The significance of these three bridges are that they were an important part of the rural opening up of New South Wales and a typical and practical design using local material. The significance has been lessened by the current condition and changes.

5.0 RECOMMENDATIONS

Replacement of the three bridges is the only and most feasible long-term solution as the alternative is to gradually dismantle and replace all deteriorated sections to the original details. This should provide a life of 90 years with a mid-life upgrade.



During the demolition, a photographic record should be undertaken to record the existing details and the archive retained by Council and the Council library.

All sound timber should be retained for reuse of other historic bridges or offered to the Araluen community for public furniture such as seats or used in other QPRC community projects.



ATTACHMENT 1 LEP CITATION



Item Details

Name

Jembaicumbene Creek Bridges

SHR/LEP/S170

LEP #I339

Address

Araluen Road REIDSDALE NSW 2622

Local Govt Area

Queanbeyan-Palerang Regional

Local Aboriginal Land Council

Unknown



Item Type

Built

Group/Collection

Unknown

Category

Unknown

All Addresses

Addresses

Records Retrieved: 1

| Street No | Street Name | Suburb/Town/Postcode | Local Govt. Area | LALC | Parish | County | Electorate | Address Type |
|-----------|--------------|----------------------|------------------------------|---------|--------|--------|------------|-----------------|
| | Araluen Road | REIDSDALE/NSW/2622 | Queanbeyan-Palerang Regional | Unknown | | | Unknown | Primary Address |

Boundary Description

Spans Jembaicumbene Creek

Significance

Statement Of Significance

This item is representative of a class of wooden bridges constructed in Tallaganda Shire Council area, and illustrates the development of a series of crossings at this point on the Creek.

Criteria a)

Historical Significance

This item is assessed as historically representative locally.

Criteria c)

Aesthetic/Technical Significance

This item is assessed as aesthetically representative locally.

Criteria e)

Research Potential

This item is assessed as scientifically representative locally.

Criteria f)

Rarity

This heritage item is rare

Criteria g)

Representative

This heritage item is representative.

Integrity/Intactness

Integrity: High

Owners

Records Retrieved: 0

| Organisation | Stakeholder Category | Date Ownership Updated |
|------------------|----------------------|------------------------|
| No Results Found | | |

Description

Designer

Builder/Maker

Physical Description

Updated

Three bridges span Jembaicumbene creek on the Araluen Road, 11km south of Braidwood. The creek has been extensively mined. One dredging hole is located to the south west of the bridges. A roadway is built up above the surrounding terrain, and bridge embankments are built up with granite rubble stone. The bridges are similar construction, the southern 2 each having rows of 3 round piles which support round timbers, squared on top to carry milled planks and horizontal wooden retaining walls at each end. The northern bridge is 18m long supported on 2 rows of trestles. The central bridge is 39m long, supported on 5 trestles. The remains of piles for 3 earlier rows of trestles are still in situ in the water. 50m south is the third bridge 6m long, single span. and very large granite stones on the western embankment adjacent to the bridge. Basket willows are on either side of road, the most southern on the east side of the bridge with a fence post grown into it, is a particularly large tree. Wooden guard rails on each bridge.

Physical Condition

Updated

Good, Interior Inspected: Not Applicable

Modifications And Dates

Further Comments

Current Use

Former Use

Listings

Listings

| Records Retrieved: 2 | | | | | |
|--------------------------|----------------------------------------|----------------|-----------------------|----------------|--------------|
| Heritage Listing | Listing Title | Listing Number | Gazette Date | Gazette Number | Gazette Page |
| Local Environmental Plan | Palerang Local Environmental Plan 2014 | I339 | 9/19/2014 12:00:00 AM | | |
| Heritage study | | | | | |

Procedures/Exemptions

| Records Retrieved: 0 | | | | | |
|----------------------|-------------|-------|----------|-------------|---------|
| Section of Act | Description | Title | Comments | Action Date | Outcome |
| No Results Found | | | | | |

History

Historical Notes or Provenance

Updated

Located on the Braidwood/Araluen road, adjacent to Bell's Paddock, the bridge replaces an earlier ford to the west.

Historic Themes

| Records Retrieved: 8 | | |
|----------------------|-------------|-------------|
| National Theme | State Theme | Local Theme |
| 9. Phases of Life | Events | Unknown |
| 8. Culture | Sport | Unknown |
| 4. Settlement | Land tenure | Unknown |
| 3. Economy | Transport | Unknown |
| 3. Economy | Technology | Unknown |
| 3. Economy | Pastoralism | Unknown |
| 3. Economy | Mining | Unknown |
| 3. Economy | Agriculture | Unknown |

Recommended Management

Management Summary

Management

| Records Retrieved: 0 | | |
|----------------------|-----------------|--------------|
| Management Category | Management Name | Date Updated |
| No Results Found | | |

Report/Study

Heritage Studies

Records Retrieved: 2

| Report/Study Name | Report/Study Code | Report/Study Type | Report/Study Year | Organisation | Author |
|------------------------------|-------------------|-------------------|-------------------|--------------|------------------------------------|
| Tallaganda Shire Rural Study | | | 1995 | | Clive Lucas Stapleton and Partners |
| Tallaganda Shire Rural Study | | | 1995 | | Clive Lucas Stapleton & Partners |

Reference & Internet Links

References

Records Retrieved: 1

| Type | Author | Year | Title | Link |
|---------|------------|------|-------------------------------------------------------------------|------|
| Graphic | I. Rowland | 1860 | 'Plan of the Road from Monga to Cooma' July, 1860, AONSW MAP 5242 | |

Data Source

The information for this entry comes from the following source:

| Data Source | Record Owner | Heritage Item ID |
|------------------|--------------------------------------|------------------|
| Local Government | Queanbeyan Palerang Regional Council | 2920285 |

Every effort has been made to ensure that information contained in the State Heritage Inventory is correct. If you find any errors or omissions please send your comments to council@qprc.nsw.gov.au

All information and pictures on this page are the copyright of the Heritage Division or respective copyright owners.

ATTACHMENT 2 PHOTOGRAPHS



20240303 Site Visit

24058 Jembaicumbene Bridge Replacement



IMG_1849.JPG



IMG_1850.JPG



IMG_1851.JPG



IMG_1852.JPG



IMG_1853.JPG



IMG_1854.JPG



IMG_1855.JPG



IMG_1856.JPG



IMG_1857.JPG



IMG_1858.JPG



IMG_1859.JPG



IMG_1860.JPG

20240303 Site Visit

24058 Jembaicumbene Bridge Replacement



IMG_1861.JPG



IMG_1862.JPG



IMG_1863.JPG



IMG_1864.JPG



IMG_1865.JPG



IMG_1866.JPG



IMG_1867.JPG



IMG_1868.JPG



IMG_1869.JPG



IMG_1870.JPG



IMG_1871.JPG



IMG_1872.JPG

20240303 Site Visit



IMG_1873.JPG



IMG_1874.JPG



IMG_1875.JPG



IMG_1876.JPG



IMG_1877.JPG



IMG_1878.JPG



IMG_1879.JPG



IMG_1880.JPG



IMG_1881.JPG



IMG_1882.JPG



IMG_1883.JPG



IMG_1884.JPG

24058 Jembaicumbene Bridge Replacement

20240303 Site Visit

24058 Jembaicumbene Bridge Replacement



IMG_1885.JPG



IMG_1886.JPG



IMG_1887.JPG



IMG_1888.JPG



IMG_1889.JPG



IMG_1890.JPG



IMG_1891.JPG



IMG_1892.JPG



IMG_1893.JPG



IMG_1894.JPG



IMG_1895.JPG



IMG_1896.JPG

20240303 Site Visit

24058 Jembaicumbene Bridge Replacement



IMG_1897.JPG



IMG_1898.JPG



IMG_1899.JPG



IMG_1900.JPG



IMG_1901.JPG



IMG_1902.JPG



IMG_1903.JPG

QUEANBEYAN-PALERANG REGIONAL COUNCIL

Council Meeting Attachment

29 JANUARY 2025

| | |
|--------------|---------------------------------------------------------------------------------------------|
| ITEM 9.1 | DEMOLITION OF LOCAL HERITAGE ITEM - JEMBAICUMBENE BRIDGES, ARALUEN ROAD, REIDSDALE |
| ATTACHMENT 2 | ATTACHMENT 2 - HERITAGE ADVISORY SERVICE COMMENTS - JEMBAICUMBENE BRIDGES REPLACEMENT |

| Queanbeyan-Palerang Regional Council - Heritage Advisory Service | |
|---------------------------------------------------------------------------------------------------------------------------------------------------------------------------------------------------------------------------------------------------------------------------------------------------------------------------------------------------------------------------------------------------------------------------------------------------------------------------------------------------------------------------------------------------------------------------------------------|------------------------------------------------------|
| <p><i>The Queanbeyan-Palerang Regional Council (QPRC) Heritage Advisory Service is provided by Philip Leeson Architects for the QPRC, to assist QPRC and owners of heritage properties and places within the council area.</i></p> <p><i>Advice provided by the service does not constitute formal approval of works, which would require Council planning approval. Further enquiries in relation to heritage matters can be made to the QPRC Land Use Planning Team on (02) 6285 6276 or emailing landuseadmin@qprc.nsw.gov.au.</i></p> | |
| Date | 8 January 2025 |
| Property Address | Jembaicumbene Bridges, Araluen Road, Reidsdale |
| Lot/Section | - |
| Deposited Plan (DP) | - |
| Heritage Status | Individual LEP Listing – Jembaicumbene Creek Bridges |
| Nature of Advice | Review of Proposal |

Background

QPRC have advised that the Jembaicumbene Creek Bridges on Araluen Road require upgrading to accommodate heavier traffic flow, as the main throughfare between Braidwood and Araluen. There are three timber beam bridges over Jembaicumbene Creek, with Council documents stating that all three bridges are in degrading condition and are at risk of failure. QPRC is proposing to demolish the three existing bridge structures and replace with new 'concrete cast in place' bridge structure within the existing alignments (plans by Bridge Design Pty Ltd). The proposal is being funded by the 'Fixing Country Bridges' initiative of Transport for NSW. According to the Heritage Report for the project, prepared by Eric Martin & Associates (EMAA), the original design of the bridges was a standard type from 1935, with all three of similar construction, including timber piles, 300mm x 150mm pole beams, a spiking plate and timber planks. Timber handrails are also included on each side and abutments are also of timber planks. Bridge 1 is 18m long, Bridge 2 is 37.2m long and Bridge 3 is 6.6 m long.

The bridges are listed on Schedule 5 of the QPRC Local Environment Plan (LEP) – item I339. The statement of significance is: *This item is representative of a class of wooden bridges constructed in Tallaganda Shire Council area and illustrates the development of a series of crossings at this point on the Creek.*

A brief review was undertaken to understand how the Jembaicumbene Creek Bridges fit into the wider context of timber beam bridges in NSW. An assessment report on a similar bridge near Singleton, NSW¹ provides a broader summary of the development of timber bridges in NSW and notes that although masonry bridges were far more durable, the vast majority of road bridges constructed in NSW until the second half of the 20th Century were made of timber. This was due to the abundance and availability of hardwood timber and the cost of timber bridge construction being considerably less than masonry or iron and involving less material transport. The study describes timber beam bridges as the longest serving type of timber bridge in NSW, with thousands constructed to very similar designs. Most were constructed with a predicted lifespan of 25-50 years, but with the ability to be strengthened, altered and have singular components replaced as required. Despite concrete and metal construction becoming more available and economical, timber beam bridges were constructed in rural areas at least until the 1960s. Concrete bridges have been predominant since this time and have commonly replaced timber bridges as they deteriorate.

The Jembaicumbene Bridges were first constructed to plans developed in 1935, however their current fabric is unlikely to be fully original, with remnants of earlier piers and planks remain extant under existing functional structures. They have also been strengthened and altered at several stages in their lifespan, with elements replaced as required to ensure their ongoing use.



Location of bridges on aerial image (Google Maps)

Documents Provided for Review

The following documents were reviewed in the preparation of this advice:

- Plans for the replacement bridges by Bridge Design Pty Ltd (October, 2024)
- Heritage Report, Eric Martin & Associates (March, 2023)
- Review of Environmental Factors, Macrozamia Environmental Consulting (October, 2022)

Proposed Works

The proposed project would see:

- Traffic management including diversion of traffic.
- Installation of temporary erosion and sediment controls.
- Demolition of existing bridge structure and removal of components.
- Construction of 'cast in place' headwalls and deck.
- Rehabilitation of road approaches.
- Sealing of deck to match road approaches.
- Drainage and signage construction.
- Installation of traffic signage and bridge furniture including barriers.
- Commissioning of new crossing.
- Rehabilitation of site including removal of temporary erosion control and waste

LEP/DCP Requirements

Clause 5.10 Heritage Conservation of the LEP sets out the following objectives:

- a. *to conserve the environmental heritage of the Queanbeyan-Palerang Regional local government area,*
- b. *to conserve the heritage significance of heritage items and heritage conservation areas, including associated fabric, settings and views,*

The clause also states that development consent is required demolishing, moving or altering a heritage item. It further details that the consent authority must, before granting consent, consider the effect of the proposed development on the heritage significance of the item and may require a heritage management document to be prepared that assesses the extent to which the carrying out of the proposed development would affect the heritage significance of the heritage item.

Section B.10.1.5 of the Palerang Development Control Plan (DCP) states that the demolition of locally listed heritage items requires the consent of Council, and the DCP controls state that demolition will only be permitted where:

- *the building is so structurally unsound as to be beyond reasonable economic repair. The development application must include a professional structural assessment in support of demolition.*
- *the existing condition poses a significant health or safety risk that is beyond reasonable economic repair. The development application must include a professional structural or health assessment demonstrating that conservation is not a practical option.*

Discussion

Significance of the Bridges

The statement of significance of the Jembaicumbene Bridges is very brief in the State Heritage Inventory and does not consider the potential comparative significance of the Bridges, especially in terms of their intactness or rarity. In previous studies by the former NSW Roads and Traffic Authority (RTA, now under Transport for NSW), it was noted that timber beam bridges are a very common form of bridge in NSW, but that increased traffic volumes, especially through rural areas continue to create pressure for their removal. The study also notes that understanding the comparative significance of timber bridges is problematic, with their design and construction being poorly documented, and little research being carried out on these bridge types, their locations and remaining extent. Large scale replacement programs, such as the 'Fixing Country Bridges' initiative have also seen many of the remaining timber bridges replaced.

The Jembaicumbene Creek Bridges are intact and representative examples of timber beam bridge construction from the twentieth century. A brief review demonstrates that there are limited numbers remaining in the immediate region, some of which are also proposed for replacement under the same funding program, meaning they are likely to be increasingly rare. The Jembaicumbene Creek Bridges remain largely true to their original 1930s design, but have been altered, upgraded and had individual elements replaced since that time. As mentioned, whether they are rare in terms of bridges of this type within the region, or more widely in NSW, has not been well established and a study by Transport for NSW would be required to provide further information on this. Such a study is unlikely to be undertaken in a timeframe which assists on this particular proposal. The loss of these bridges could potentially contribute to the wider loss of examples of this type of construction.

Condition Issues and Public Safety

The significant health and safety risks associated with deteriorating bridges is noted in several documents, though has not been supported by an engineering/condition assessment (one may exist, though has not been reviewed by PLA in the provision of this advice). Such a report is required by the DCP controls. Images included

within the Heritage Report does demonstrate some timber elements are worn/damaged, however the continued use of the bridges demonstrates they are in usable condition, at least in the short term.

The Review of Environmental Factors report details that the options assessed by Council in making the decision to demolish and replace the Bridges were to 'do nothing' and 'undertake the works as proposed'. This limited analysis did not include assessments of the feasibility of repair/restoration/replacing individual elements, enhancing the structural system to allow partial retention of the structures, or rebuilding the bridges in a compliant, but similar style to the historic bridges. Such options deserve consideration, given the heritage status of the Bridges.

Summary

The loss of LEP listed heritage items is not an ideal outcome, especially when the rarity or comparative significance of the items is not well established. However, it is understood that public safety is imperative and understood as a key consideration for QPRC.

If, following analysis of further options and the condition of the current bridges, QPRC are satisfied that demolition and replacement of the Jembaicumbene Creek Bridges is the only feasible option then the following mitigation measures should be implemented as part of the project. It is noted that the DCP controls state that demolition would only be appropriate if the Bridges pose a significant health and safety risk and/or are beyond reasonable economic repair.

The mitigation measures agree with and expand on the recommendations in the EMAA Heritage Report:

- Documentation of the Bridges in their current condition should be compiled, including:
 - Annotating the original plans which note any changes to the original 1935 design.
 - A full digital archival record of each bridge and its context in line with [NSW Heritage Office Guidelines for Archival Recording](#).
 - Recording should be compiled and provided to the Heritage Library.
- Salvage and retention of the timber from the bridges, including:
 - Storage for use in the repair or restoration of other historic timber structures within the Local Government Area
 - Provision for use by the local community for public art or other projects, such as street furniture, pedestrian bridges or other structures.
 - Potential provision of a sample of timber to the local Museum/Historical Society (receipt and size to be confirmed by Museum).
 - Interpretation & communication of the significance and former role of the removed bridges, this could be online, or on site, such as a sign, simple webpage detailing the original Bridges (images and plans) or on social media, for example.

¹ RTA, 2000, Heritage Assessment of The Timber Beam Bridge Over Howes Valley Creek, accessed 6 January 2025, <https://heritagensw.intersearch.com.au/heritagenswjspuil/bitstream/1/1665/1/000037735%20-%20HERI.pdf>

QUEANBEYAN-PALERANG REGIONAL COUNCIL

Council Meeting Attachment

29 JANUARY 2025

ITEM 9.2 WARRIGAL RESIDENTS COMMITTEE DONATION REQUEST

ATTACHMENT 1 LETTER OF SUPPORT FROM CEO WARRIGAL CARE



Warrigal Administration: 2 Pine Street Albion Park Rail
PO Box 435 Albion Park NSW 2527
T: 02 4257 4257 F: 02 4257 4232
Freecall: 1800 626 670 E: warrigal@warrigal.com.au

September 2024

For the attention of : Wendy – Rates Department

Ms Rebecca Ryan
General Manager
Queanbeyan-Palerang Regional Council

Email: council@qprc.nsw.gov.au

Dear Ms Ryan

RE: Follow Up on Request for donation by Council in respect of Annual Rates and Charges and one off fees pursuant to Category C Donations 2023

I am writing to follow up on my previous correspondence of 17 September regarding our request for a donation from the Council towards the annual rates and charges for Warrigal Queanbeyan. After further consultation with the resident committee, I would like to provide an update on our position.

Warrigal is willing to accept the proposed donation which would then be applied as a credit against the village's water and sewerage charges for the financial year from 1 July 2024 to 30 June 2025. This donation would directly benefit each resident of the village by lowering their water and sewerage charges for that year, thereby alleviating some of the recurrent financial burdens faced by our residents.

I understand that Council has proposed a donation of \$39.37 for each unit for water charges and \$39.37 for each unit for sewerage charges, totalling a donation of \$4,094.48 for the residents of our Queanbeyan village. We believe this support would make a meaningful difference for our community, particularly for the pensioners who comprise the majority of our residents.

We appreciate your consideration of this donation and its potential impact on the financial wellbeing of our residents. If you need any further information or wish to discuss this matter in more detail, please do not hesitate to contact me.

Thank you for your ongoing support, and I look forward to your response.

Yours sincerely



Craig Smith
Chief Operating Officer

QUEANBEYAN-PALERANG REGIONAL COUNCIL

Council Meeting Attachment

29 JANUARY 2025

ITEM 9.2 WARRIGAL RESIDENTS COMMITTEE DONATION REQUEST

ATTACHMENT 2 REQUEST FROM RESIDENTS COMMITTEE

Received By
Queanbeyan Palerang
Regional Council

16 JUL 2024

Customer Service
Queanbeyan Office

15 July, 2024

TO: The Mayor and the Councillors of QPRC

RE: Request for donation by Council in respect of Annual Rates and Charges and one off fees pursuant to Category C Donations 2023.

My name is [REDACTED] and I am a resident of the Warrigal Care Independent Living Units Village in Queanbeyan which is owned and operated by Warrigal Care located at 50 Canberra Avenue, Queanbeyan. I am the President of the Executive Committee of the Village

From past Rates and Charges Notices it is observed that both the Care Home operated by Warrigal Care and the Retirement Village are on the same DP No 1256702.

I note that Warrigal Care is a not-for-profit organisation.

I have been advised by Council that the independent living village's estimated proportion of the access charges for water and sewerage for the current financial year, 1 July 2024 to 30 June 2025 are as follows:

Water - \$20,147.00
Sewerage - \$32,379.00

This village consists of people living in their private homes, and are not part of any profit making business, such as a hotel or motel or club and that the majority of our residents are pensioners, with no other income. If we were living in the general community of Queanbeyan we would be offered discounted rates and charges. In this regard we are advised that Council may consider donations towards annual rates and charges for community organisations that are able to demonstrate registered not-for-profit status, however any donation provided for this purpose would be at Council's discretion.

Given that our access charges for water and sewerage are quite high and that the majority of our residents are pensioners and that Warrigal Care is a not-for-profit organisation we request that Council give consideration to a donation in respect of the Village's proportion of the access charges for water and sewerage.

We thank you for your considerations of this matter,

Yours faithfully,
Warrigal Queanbeyan Independent Village

[REDACTED]

President Executive Committee

| | |
|------------------------------------------------|----------|
| RECEIVED IN | |
| Recc'd | |
| Queanbeyan-Palerang Regional Council | |
| 17 JUL 2024 | |
| Document No. | File No. |
| Document Scanned? <input type="checkbox"/> Yes | |

QUEANBEYAN-PALERANG REGIONAL COUNCIL

Council Meeting Attachment

29 JANUARY 2025

- | | |
|--------------|-----------------------------------------------------------------------------------------------------------------|
| ITEM 9.4 | RENEWAL OF ALCOHOL RESTRICTIONS IN LOCAL GOVERNMENT AREA AND ADDITION OF NEW AREA AT 1 FARRER PLACE, QUEANBEYAN |
| ATTACHMENT 1 | NSW DEPT OF PLANNING AND ENVIRONMENT - ALCOHOL-FREE ZONES AND ALCOHOL PROHIBITED-AREAS - FACT SHEET |

Department of Planning and Environment Fact Sheet



Alcohol Free Zones and Alcohol Prohibited Areas in NSW

Key points

- Alcohol free zones (AFZs) and alcohol prohibited areas (APAs) may be used by councils to prohibit alcohol consumption in public places to reduce anti-social behaviour and crime.
- AFZs apply to road-related public areas (e.g. public road, footpath or carpark). APAs apply to non-road-related public places (e.g. parks).
- These measures can help councils to keep public spaces and streets safe and enjoyable for residents and visitors while not discriminating against particular community groups.
- AFZs and APAs should be used where there is demonstrable community need, deal with short-term issues and regularly reviewed to see if they are still needed.
- Used in isolation, AFZs and APAs may simply move a problem from one place to another. They are likely to be more effective when they form part of a broader strategy including things like education, community programs and public place design.

Snapshot Summary

| | Alcohol Free Zones (AFZs) | Alcohol Prohibited Areas (APAs) |
|---------------------------------|--------------------------------------------------------------------------------------------------|-------------------------------------------------------------------------------------------------------|
| Purpose | To prevent anti-social behaviour and alcohol-related crime in public | As for AFZs |
| Enabling power | Enables councils to use signage to prohibit the drinking of alcohol in a designated public place | As for AFZs |
| Location | A road-related public place (such as car park, public road or footpath) | A non-road-related public place (such as a park or beach or reserve) |
| Legislation | Sections 642 - 648 of the <i>Local Government Act 1993</i> (the Act) | Section 632A of the Local Government Act |
| Duration Limit | Maximum 4 years | Not required. Best practice is for a council to review it within 4 years. |
| Special Times and Events | May be established for special events (eg. New Year's Eve) | May be established to operate at certain times of the day and for special events (eg. New Year's Eve) |

Department of Planning and Environment Fact Sheet



| | | |
|------------------------------|----------------------------------------------------------------------------------------------------------------------------------------------------------------------------------------------------------------------------------------------------------------------------------------------------------------------------------------------------------------------------------------------------------------------------------------------------------------------------------------------------------------------------|-----------------------------------------------------------------------------------------------------------------------------------------------------------------------------------------------------------------------------------------------------------------------------------------------------------------------------------------------------------------------------------------------------------------------------------------------------------------------------------------------------------------------------------------------------------------------------------------------------|
| Establishment trigger | Request from local community representative, Police or council. | Not required. Best practice is for a council to establish where there is local need. |
| Consultation | Council must consult (allowing at least 30 days for feedback) to decide if an AFZ is appropriate, including with: <ul style="list-style-type: none"> Local Police Local liquor licensees/registered clubs adjacent to a proposed zone Organisation/s able to speak on behalf of an Aboriginal or culturally and linguistically diverse group NSW Anti-Discrimination Board IF a council is one of 16 councils listed in Appendix 2 of the Ministerial Guidelines on AFZs. | Council must consult with: <ul style="list-style-type: none"> Local Police NSW Land and Housing Corporation (IF the APA is to be on open space on public housing land, which can only occur when it is adjacent to another APA or AFZ) NSW Anti-Discrimination Board IF a council is one of 16 councils listed in Appendix 2 of the Ministerial Guidelines on AFZs. These councils must additionally follow all other AFZ consultation requirements. Best practice is for a council to undertake community consultation to decide if an APA is appropriate. |
| Evidence of need | A proposal to establish an AFZ must be supported by evidence of need. | Not required. Best practice is an APA is established only after evidence of need. |
| Council resolution | Required. | Not required. Best practice is for a council to resolve to establish an APA. |
| Signposting | Required. Signs clearly showing restrictions in place, including places at which alcohol consumption is prohibited. | Required. Signs clearly showing restrictions, including places and times at which alcohol consumption is prohibited. |
| Public Notice | Appropriate public notice at least 7 days prior to establishing an AFZ. | Not required. Best practice is for a council to notify the public when establishing an APA |

Department of Planning and Environment

Fact Sheet



| | | |
|-----------------------------------------|-----------------------------------------------------------------------------------------------------------------------------------------------------------------------------------------------------------------------------------------------------------------------------|---------------------------------------------------------------------------------------|
| Enforcement | Council enforcement officers and Police | As for AFZs. |
| Enforcement power | To tip out or otherwise dispose of alcohol being consumed. Note: Focus is to deter irresponsible drinking without imposing fines on potentially disadvantaged people. | As for AFZs. |
| Guidelines | Mandatory <u>Ministerial Guidelines</u> for AFZ establishment and review. | Not required. Best practice is to follow the process in the Guidelines. |
| Why are AFZs and APAs different? | This is largely historic in nature to meet Government policy objectives at the time. If in doubt, best practice is to follow the process to establish, consult on and review both APAs as for AFZs as outlined in the <u>Ministerial Guidelines</u> for AFZs. | |

QUEANBEYAN-PALERANG REGIONAL COUNCIL

Council Meeting Attachment

29 JANUARY 2025

ITEM 9.4 RENEWAL OF ALCOHOL RESTRICTIONS IN LOCAL
GOVERNMENT AREA AND ADDITION OF NEW AREA AT
1 FARRER PLACE, QUEANBEYAN

ATTACHMENT 2 MONARO POLICE DISTRICT - REQUEST FOR 1 FARRER
PLACE TO BE DECLARED AN ALCOHOL-FREE AREA



NSW Police Force

RE: Alcohol Free Zone to be implemented at 1 Farrer Street, Queanbeyan including the under cover picnic area and carpark surrounding the visitors information centre.

To whom it concerns,

I am writing to ask council to consider making the under-cover picnic table and associated car parking at 1 Farrer Place, Queanbeyan and alcohol free zone.

The picnic tables and carparking are located at visitor's centre within the CBD of Queanbeyan To the north is Queanbeyan Police Station, to the south St Raphael Roman Catholic Church, to the east is the NSW Government Building and to the west is a service station and other retail outlets.

There is also a toilet block located next to the picnic area. These are public toilets which are open 24 hours a day and are used by all members of the public.



SECTION/ Branch

Insert Address NSW 2xxx

T 02 xxxx xxxx **F** 02 xxxx xxxx **W** www.police.nsw.gov.au

TTY 02 9211 3776 for the hearing and speech impaired ABN 43 408 613 180

TRIPLE ZERO (000)

Emergency only

POLICE ASSISTANCE LINE (131 444)

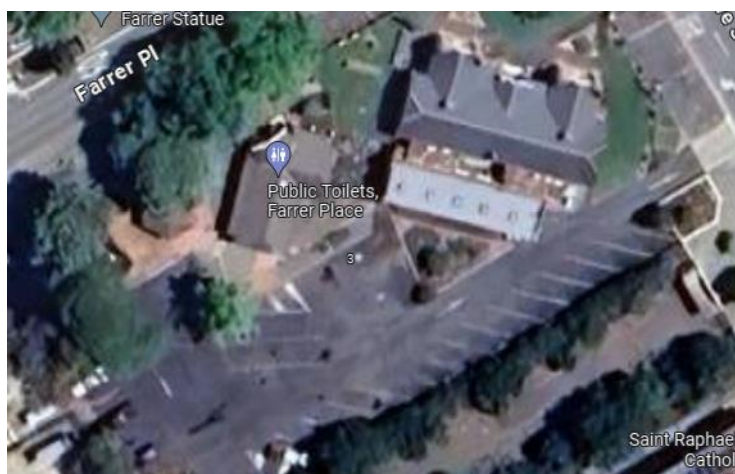
For non emergencies

CRIME STOPPERS (1800 333 000)

Report crime anonymously



NSW Police Force



The picnic tables are used by members of the public where to sit and socialise. These members of the public often consume alcohol which in turn affects their behaviours towards each other and more importantly to members of the public. The object of an alcohol free zone is to assist early intervention measures to prevent the escalation of irresponsible street drinking which can lead to incidents involving crime.

There is no reason for the location to be an area for the alcohol consumption as the area is a carpark and area where public amenities are located for public use.

While some instance are reported to police, a number of incidents go unreported or reported via social media sites such as facebook.

Informal conversations have also taken place between the Seniors Group and other NSW Government agencies that are situated at 11 Farrer Place, Queanbeyan. The Seniors Group uses the location as a place to meet and often have to contend with person drinking alcohol in the area. Other NSW Government workers working in Farrer Place, often walk ask the picnic area to go to various locations in the main street and often have to listen and observe anti-social behaviours as a result of drinking alcohol.

Some of the incidents have been reported to police which are alcohol related are:

E81874685 - About 0135hrs 5th February 2024 Police received a call from the member of the public that there is a female lying on a parked bench opposite the Queanbeyan Police station. About 0140hrs Police arrived at the location and observed the intoxicated persons. Police could see that the IP was stumbling and her speech was also slurring when talking to Police. Due to the Duty of care for the IP, Police brought

SECTION/ Branch

Insert Address NSW 2xxx

T 02 xxxx xxxx **F** 02 xxxx xxxx **W** www.police.nsw.gov.au

TTY 02 9211 3776 for the hearing and speech impaired ABN 43 408 613 180

TRIPLE ZERO (000)

Emergency only

POLICE ASSISTANCE LINE (131 444)

For non emergencies

CRIME STOPPERS (1800 333 000)

Report crime anonymously



NSW Police Force

the IP to the Queanbeyan Hospital where she was checked in and looked after by the hospital staff to sober up.

E93219676 - About 9.30pm on the 16th March 2024, a person of interest was drinking alcohol at the location. Police were called due to the persons aggressive behaviour. Police arrived where they began swearing at police and the person was issued an infringement notice for swearing in a public place.

E96839370 - About 11.34pm, 12th July 2024, POI stumbled from the BBQ area of the playground in Farrer PI across the road towards police outside the Queanbeyan Police station. The POI was slurring his speech, intermittently shivering and unsteady on his feet. The POI was largely incoherent, however, communicated that he needed help getting home. The POI told police that he had consumed half a cask of wine at about 19:30 but had not taken any drug other than his prescribed methadone. The POI's presentation lead police to believe that he may have consumed more alcohol than he had told police or prohibited drugs. Police called NSW ambulance to assess the POI.

E84916181 – About 7.20pm, 29th October 2024, police parked in the emergency services parking outside the Queanbeyan Police Station and over heard loud yelling and commotion from the Farrer Place Park across from the Queanbeyan Police Station. Police walked across the road and observed a group of males seated at a park bench with an open bottle of port wine in the middle of the table. When questioned about the bottle of port, one of the males made attempts to hide it under the table. As the males were consuming alcohol in a public place they were issued with a move on direction by police about 1930. All males complied with police direction and left the park after being issued with the direction.

CAD Report number: 583114-28//2024 - JOB received 12.36pm, 28th November 2024,

INFT VERY DISTRESSED, MULTIPLE POIS DRINKING WINE OS PUBLIC TOILETS - INFT WANTS TO USE THE SHOWERS BUT IS SCARED OF THEM - POI ALL M, 6 POIS ALL UP - RANGE IN AGE - POIS CATCALLED SOME WOMEN THAT WALKED PAST - NIL ATTEMPTS TO HURT ANYONE - CALLER GOT VERY FRUSTRATED WITH TZ, STARTED SCREAMING THAT SHE IS HOMELESS AND NEEDS TO GO TO A FUNERAL - SAID THEY HAD KNIVES AND TERMINATED CALL

There are a number of other incidents that have occurred at this location and the above is a sample that police have dealt with.

SECTION/ Branch

Insert Address NSW 2xxx

T 02 xxxx xxxx **F** 02 xxxx xxxx **W** www.police.nsw.gov.au

TTY 02 9211 3776 for the hearing and speech impaired ABN 43 408 613 180

TRIPLE ZERO (000)

Emergency only

POLICE ASSISTANCE LINE (131 444)

For non emergencies

CRIME STOPPERS (1800 333 000)

Report crime anonymously



NSW Police Force

The Monaro Police District asks that a consideration be given to implementing an alcohol free zone at this location. Due to alcohol consumption anti-social behaviours, criminal behaviours and local people feeling unsafe have increased in this area.

If you require any further information please do not hesitate to contact myself.

Senior Constable Emma Tubman
Crime Prevention Officer
Monaro Police District
28th November 2024

SECTION/ Branch

Insert Address NSW 2xxx

T 02 xxxx xxxx **F** 02 xxxx xxxx **W** www.police.nsw.gov.au

TTY 02 9211 3776 for the hearing and speech impaired ABN 43 408 613 180

TRIPLE ZERO (000)

Emergency only

POLICE ASSISTANCE LINE (131 444)

For non emergencies

CRIME STOPPERS (1800 333 000)

Report crime anonymously

QUEANBEYAN-PALERANG REGIONAL COUNCIL

Council Meeting Attachment

29 JANUARY 2025

ITEM 9.5 MONARO STREET UPGRADE - DETAILED DESIGN

ATTACHMENT 1 MONARO STREET UPGRADE - LANDSCAPE DESIGN -
OPTION 1

MONARO STREET UPGRADE
QUEANBEYAN, NSW

LANDSCAPE ARCHITECTURE: 100% DETAILED DESIGN

LOCATION PLAN



DRAWING SCHEDULE

| SHEET | NAME | DATE | REVISION | SCALE |
|-------|-----------------------------------------|----------|----------|-------------|
| L000 | COVER SHEET | 11.12.24 | B | N/A |
| L001 | LEGEND | 11.12.24 | B | N/A |
| L002 | GENERAL LANDSCAPE PALETTE | 11.12.24 | B | N/A |
| L003 | PLANTING PALETTE | 11.12.24 | B | N/A |
| L004 | PLANTING PALETTE | 11.12.24 | B | N/A |
| L005 | MATERIALS SCHEDULE | 11.12.24 | B | N/A |
| L006 | PAVING SCHEDULE | 11.12.24 | B | N/A |
| L007 | SITE PLAN | 11.12.24 | B | 1:1000 @ A1 |
| L008 | GENERAL ARRANGEMENT PLAN 01 | 11.12.24 | B | 1:200 @ A1 |
| L009 | GENERAL ARRANGEMENT PLAN 02 | 11.12.24 | B | 1:200 @ A1 |
| L010 | GENERAL ARRANGEMENT PLAN 03 | 11.12.24 | B | 1:200 @ A1 |
| L011 | GENERAL ARRANGEMENT PLAN 04 | 11.12.24 | B | 1:200 @ A1 |
| L012 | LEVELS PLAN 01 | 11.12.24 | A | 1:200 @ A1 |
| L013 | LEVELS PLAN 02 | 11.12.24 | A | 1:200 @ A1 |
| L014 | LEVELS PLAN 03 | 11.12.24 | A | 1:200 @ A1 |
| L015 | LEVELS PLAN 04 | 11.12.24 | A | 1:200 @ A1 |
| L016 | PLANTING PLAN 01 | 11.12.24 | B | 1:200 @ A1 |
| L017 | PLANTING PLAN 02 | 11.12.24 | B | 1:200 @ A1 |
| L018 | PLANTING PLAN 03 | 11.12.24 | B | 1:200 @ A1 |
| L019 | PLANTING PLAN 04 | 11.12.24 | B | 1:200 @ A1 |
| L020 | SECTIONS AND ELEVATIONS | 11.12.24 | A | 1:50 @ A1 |
| L021 | DETAILS 01 - PAVING DETAILS | 11.12.24 | B | VARIES |
| L022 | DETAILS 02 - FURNITURE DETAILS | 11.12.24 | B | VARIES |
| L023 | DETAILS 03 - CUSTOM SEAT TYPE A DETAILS | 11.12.24 | B | VARIES |
| L024 | DETAILS 04 - CUSTOM SEAT TYPE B DETAILS | 11.12.24 | B | VARIES |
| L025 | DETAILS 05 - TYPICAL SOFTWARES DETAILS | 11.12.24 | B | VARIES |

NOTES

1. THIS DRAWING IS TO BE READ IN CONJUNCTION WITH ALL LANDSCAPE ARCHITECTURE SCHEDULES, TECHNICAL SPECIFICATIONS, AND OTHER CONSULTANT DRAWINGS. PLEASE CHECK AND VERIFY ALL DIMENSIONS AND SITE CONDITIONS PRIOR TO THE COMMENCEMENT OF ANY WORK. DO NOT SCALE DRAWINGS. REFER TO FIGURED CONSTRUCTION SERVICES SHOWN ON THIS DRAWING ARE APPROXIMATE ONLY. THE EXACT LOCATION IS TO BE CONFIRMED ON-SITE BY CONTRACTOR PRIOR TO COMMENCEMENT. SNA BEFORE YOU DIG.



oculus info
ABN 34 074 882 447

We acknowledge the Ngambri/Ngunnawal People as the Traditional Custodians of this place. We honour Elders past and present, whose profound knowledge systems can teach us much about we care and design for Country.

PROJECT SH-001
MONARO ST UPGRADE
MONARO ST, QUEANBEYAN
STATUS
DESIGN/DESIGN/DESIGN
CLIENT
QUEANBEYAN/PALEBORO REGIONAL COUNCIL
COLLABORATOR(S)
WSP

| ISSUE | DATE | AMENDMENT | BY | APPROVED |
|-------|----------|---------------------------------|----|----------|
| 1 | 18.10.24 | ISSUE FOR DRAFT DETAILED DESIGN | FB | MD |
| 2 | 09.12.24 | ISSUE FOR 100% DETAILED DESIGN | FB | MD |
| 3 | 11.12.24 | ISSUE FOR 100% DETAILED DESIGN | FB | MD |
| 4 | 11.12.24 | ISSUE FOR 100% DETAILED DESIGN | FB | MD |
| 5 | 11.12.24 | ISSUE FOR 100% DETAILED DESIGN | FB | MD |
| 6 | 11.12.24 | ISSUE FOR 100% DETAILED DESIGN | FB | MD |
| 7 | 11.12.24 | ISSUE FOR 100% DETAILED DESIGN | FB | MD |
| 8 | 11.12.24 | ISSUE FOR 100% DETAILED DESIGN | FB | MD |
| 9 | 11.12.24 | ISSUE FOR 100% DETAILED DESIGN | FB | MD |
| 10 | 11.12.24 | ISSUE FOR 100% DETAILED DESIGN | FB | MD |
| 11 | 11.12.24 | ISSUE FOR 100% DETAILED DESIGN | FB | MD |
| 12 | 11.12.24 | ISSUE FOR 100% DETAILED DESIGN | FB | MD |
| 13 | 11.12.24 | ISSUE FOR 100% DETAILED DESIGN | FB | MD |
| 14 | 11.12.24 | ISSUE FOR 100% DETAILED DESIGN | FB | MD |
| 15 | 11.12.24 | ISSUE FOR 100% DETAILED DESIGN | FB | MD |
| 16 | 11.12.24 | ISSUE FOR 100% DETAILED DESIGN | FB | MD |
| 17 | 11.12.24 | ISSUE FOR 100% DETAILED DESIGN | FB | MD |
| 18 | 11.12.24 | ISSUE FOR 100% DETAILED DESIGN | FB | MD |
| 19 | 11.12.24 | ISSUE FOR 100% DETAILED DESIGN | FB | MD |
| 20 | 11.12.24 | ISSUE FOR 100% DETAILED DESIGN | FB | MD |
| 21 | 11.12.24 | ISSUE FOR 100% DETAILED DESIGN | FB | MD |
| 22 | 11.12.24 | ISSUE FOR 100% DETAILED DESIGN | FB | MD |
| 23 | 11.12.24 | ISSUE FOR 100% DETAILED DESIGN | FB | MD |
| 24 | 11.12.24 | ISSUE FOR 100% DETAILED DESIGN | FB | MD |
| 25 | 11.12.24 | ISSUE FOR 100% DETAILED DESIGN | FB | MD |
| 26 | 11.12.24 | ISSUE FOR 100% DETAILED DESIGN | FB | MD |
| 27 | 11.12.24 | ISSUE FOR 100% DETAILED DESIGN | FB | MD |
| 28 | 11.12.24 | ISSUE FOR 100% DETAILED DESIGN | FB | MD |
| 29 | 11.12.24 | ISSUE FOR 100% DETAILED DESIGN | FB | MD |
| 30 | 11.12.24 | ISSUE FOR 100% DETAILED DESIGN | FB | MD |
| 31 | 11.12.24 | ISSUE FOR 100% DETAILED DESIGN | FB | MD |
| 32 | 11.12.24 | ISSUE FOR 100% DETAILED DESIGN | FB | MD |
| 33 | 11.12.24 | ISSUE FOR 100% DETAILED DESIGN | FB | MD |
| 34 | 11.12.24 | ISSUE FOR 100% DETAILED DESIGN | FB | MD |
| 35 | 11.12.24 | ISSUE FOR 100% DETAILED DESIGN | FB | MD |
| 36 | 11.12.24 | ISSUE FOR 100% DETAILED DESIGN | FB | MD |
| 37 | 11.12.24 | ISSUE FOR 100% DETAILED DESIGN | FB | MD |
| 38 | 11.12.24 | ISSUE FOR 100% DETAILED DESIGN | FB | MD |
| 39 | 11.12.24 | ISSUE FOR 100% DETAILED DESIGN | FB | MD |
| 40 | 11.12.24 | ISSUE FOR 100% DETAILED DESIGN | FB | MD |
| 41 | 11.12.24 | ISSUE FOR 100% DETAILED DESIGN | FB | MD |
| 42 | 11.12.24 | ISSUE FOR 100% DETAILED DESIGN | FB | MD |
| 43 | 11.12.24 | ISSUE FOR 100% DETAILED DESIGN | FB | MD |
| 44 | 11.12.24 | ISSUE FOR 100% DETAILED DESIGN | FB | MD |
| 45 | 11.12.24 | ISSUE FOR 100% DETAILED DESIGN | FB | MD |
| 46 | 11.12.24 | ISSUE FOR 100% DETAILED DESIGN | FB | MD |
| 47 | 11.12.24 | ISSUE FOR 100% DETAILED DESIGN | FB | MD |
| 48 | 11.12.24 | ISSUE FOR 100% DETAILED DESIGN | FB | MD |
| 49 | 11.12.24 | ISSUE FOR 100% DETAILED DESIGN | FB | MD |
| 50 | 11.12.24 | ISSUE FOR 100% DETAILED DESIGN | FB | MD |
| 51 | 11.12.24 | ISSUE FOR 100% DETAILED DESIGN | FB | MD |
| 52 | 11.12.24 | ISSUE FOR 100% DETAILED DESIGN | FB | MD |
| 53 | 11.12.24 | ISSUE FOR 100% DETAILED DESIGN | FB | MD |
| 54 | 11.12.24 | ISSUE FOR 100% DETAILED DESIGN | FB | MD |
| 55 | 11.12.24 | ISSUE FOR 100% DETAILED DESIGN | FB | MD |
| 56 | 11.12.24 | ISSUE FOR 100% DETAILED DESIGN | FB | MD |
| 57 | 11.12.24 | ISSUE FOR 100% DETAILED DESIGN | FB | MD |
| 58 | 11.12.24 | ISSUE FOR 100% DETAILED DESIGN | FB | MD |
| 59 | 11.12.24 | ISSUE FOR 100% DETAILED DESIGN | FB | MD |
| 60 | 11.12.24 | ISSUE FOR 100% DETAILED DESIGN | FB | MD |
| 61 | 11.12.24 | ISSUE FOR 100% DETAILED DESIGN | FB | MD |
| 62 | 11.12.24 | ISSUE FOR 100% DETAILED DESIGN | FB | MD |
| 63 | 11.12.24 | ISSUE FOR 100% DETAILED DESIGN | FB | MD |
| 64 | 11.12.24 | ISSUE FOR 100% DETAILED DESIGN | FB | MD |
| 65 | 11.12.24 | ISSUE FOR 100% DETAILED DESIGN | FB | MD |
| 66 | 11.12.24 | ISSUE FOR 100% DETAILED DESIGN | FB | MD |
| 67 | 11.12.24 | ISSUE FOR 100% DETAILED DESIGN | FB | MD |
| 68 | 11.12.24 | ISSUE FOR 100% DETAILED DESIGN | FB | MD |
| 69 | 11.12.24 | ISSUE FOR 100% DETAILED DESIGN | FB | MD |
| 70 | 11.12.24 | ISSUE FOR 100% DETAILED DESIGN | FB | MD |
| 71 | 11.12.24 | ISSUE FOR 100% DETAILED DESIGN | FB | MD |
| 72 | 11.12.24 | ISSUE FOR 100% DETAILED DESIGN | FB | MD |
| 73 | 11.12.24 | ISSUE FOR 100% DETAILED DESIGN | FB | MD |
| 74 | 11.12.24 | ISSUE FOR 100% DETAILED DESIGN | FB | MD |
| 75 | 11.12.24 | ISSUE FOR 100% DETAILED DESIGN | FB | MD |
| 76 | 11.12.24 | ISSUE FOR 100% DETAILED DESIGN | FB | MD |
| 77 | 11.12.24 | ISSUE FOR 100% DETAILED DESIGN | FB | MD |
| 78 | 11.12.24 | ISSUE FOR 100% DETAILED DESIGN | FB | MD |
| 79 | 11.12.24 | ISSUE FOR 100% DETAILED DESIGN | FB | MD |
| 80 | 11.12.24 | ISSUE FOR 100% DETAILED DESIGN | FB | MD |
| 81 | 11.12.24 | ISSUE FOR 100% DETAILED DESIGN | FB | MD |
| 82 | 11.12.24 | ISSUE FOR 100% DETAILED DESIGN | FB | MD |
| 83 | 11.12.24 | ISSUE FOR 100% DETAILED DESIGN | FB | MD |
| 84 | 11.12.24 | ISSUE FOR 100% DETAILED DESIGN | FB | MD |
| 85 | 11.12.24 | ISSUE FOR 100% DETAILED DESIGN | FB | MD |
| 86 | 11.12.24 | ISSUE FOR 100% DETAILED DESIGN | FB | MD |
| 87 | 11.12.24 | ISSUE FOR 100% DETAILED DESIGN | FB | MD |
| 88 | 11.12.24 | ISSUE FOR 100% DETAILED DESIGN | FB | MD |
| 89 | 11.12.24 | ISSUE FOR 100% DETAILED DESIGN | FB | MD |
| 90 | 11.12.24 | ISSUE FOR 100% DETAILED DESIGN | FB | MD |
| 91 | 11.12.24 | ISSUE FOR 100% DETAILED DESIGN | FB | MD |
| 92 | 11.12.24 | ISSUE FOR 100% DETAILED DESIGN | FB | MD |
| 93 | 11.12.24 | ISSUE FOR 100% DETAILED DESIGN | FB | MD |
| 94 | 11.12.24 | ISSUE FOR 100% DETAILED DESIGN | FB | MD |
| 95 | 11.12.24 | ISSUE FOR 100% DETAILED DESIGN | FB | MD |
| 96 | 11.12.24 | ISSUE FOR 100% DETAILED DESIGN | FB | MD |
| 97 | 11.12.24 | ISSUE FOR 100% DETAILED DESIGN | FB | MD |
| 98 | 11.12.24 | ISSUE FOR 100% DETAILED DESIGN | FB | MD |
| 99 | 11.12.24 | ISSUE FOR 100% DETAILED DESIGN | FB | MD |
| 100 | 11.12.24 | ISSUE FOR 100% DETAILED DESIGN | FB | MD |

DRAWING TITLE
COVER SHEET
DRAWING NUMBER
L000
REVISION
A

9.5 Monaro Street Upgrade - Detailed Design
Attachment 1 - Monaro Street Upgrade - Landscape design - Option 1 (Continued)

LEGEND

GENERAL

Diagram showing extent of works and extent of property avining above.

GRADING

Diagram showing existing level, relative level, finish floor level, and top of wall.

PV - PAVING

Diagram showing various paving types: PV01 (Granite Pavers), PV02 (Granite Tumbled Filletti Pavers), PV03 (Granite Pavers), PV04 (Asphalt), PV05 (Concrete Rain Garden Crossings), PV06 (In Situ Concrete Mid Block Crossings), and TA01 (Granite Stone).

ED - EDGES & WL - WALLS

Diagram showing edge types (ED01) and wall types (WL01, WL02).

FN - FURNITURE

Diagram showing various furniture types: FN01 (Linear Straight Plinth), FN02 (Linear Curved Plinth), FN03 (SFA Coffee Table), FN04 (Feature Lantern Bollard), FN05 (SFA Bollard), FN06 (SFA Bollard), FN07 (SFA Water Fountain), FN08 (Linear Bike Rack), and FN09 (Light Pole).

PL - PLANTING

Diagram showing mass planting types: MP01 (High Street Native Mix), MP02 (Median Native Grass Mix), and MP03 (Native Wild Rind Garden Mix).

TP - TREE PLANTING

Diagram showing tree planting types: TP01 (Proposed Small Feature Tree), TP02 (Proposed Verge Shade Tree), TP03 (Proposed Median Shade Tree), TP04 (Existing Tree to be Retained), and Tree Protection Zone of Existing Tree to be Retained.

OCULUS

oculus info
ABN 34 074 882 447

wsp

This drawing is to be read in conjunction with all landscape architecture schedules, technical specifications, and other consultant drawings. Please check and verify all dimensions and site conditions prior to the commencement of any work. Do not make drawings - refer to signed dimensions only. Please inform OCULUS of any discrepancies for confirmation before proceeding. Unless otherwise noted this drawing is not for construction. Services shown on this drawing are approximate only. The exact location is to be confirmed on-site by contractor prior to commencement - before you dig (bydla.com.au). © 2024

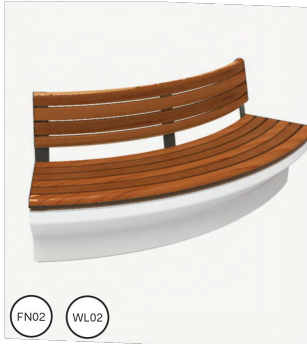
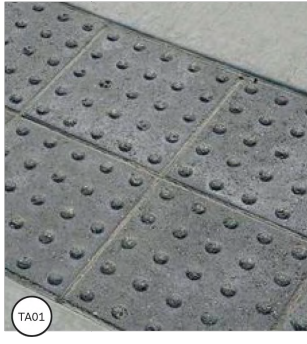
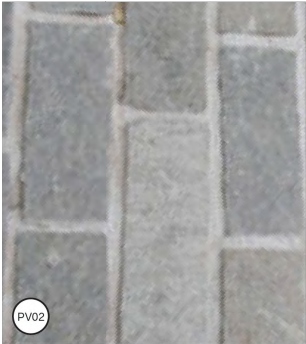
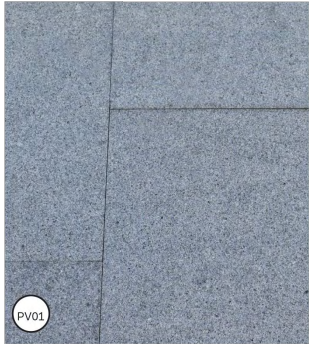
KEY PLAN

SCALE
N.T.S

PROJECT S24-001
MONARO ST UPGRADE
MONARO ST, GUNAWAN
STATUS: PRELIMINARY ONLY
CLIENT: GUNAWAN VALLEY REGIONAL COUNCIL
COLLABORATOR: WSP

Table with 4 columns: ISSUE, DATE, AMENDMENT, BY. Rows include issues for 18.10.24, 09.12.24, and 11.12.24.

DRAWING TITLE: LEGEND
DRAWING NUMBER: L001
REVISION: A



MP01 - SOUTHWEST TABLELAND GORGES RIPARIAN SHRUBLAND



Acacia dealbata



Callistemon sieberi



Lomandra spp.

MP02 - SOUTHERN TABLELAND GRASSY BOX WOODLAND



Acacia parramattensis



Hibbertia scandens



Dillwynia retorta



Bursaria spinosa



Correa reflexa



Dianella revoluta



Solanum linearifolium



Actinotus helianthi



Asplenium australasicum



Juncus usitatus



Clematis aristata



Kunzea ambigua



Geranium solanderi



Brachyscome spp.



Native Grass Mix:
- Poa labillardierei
- Austrostipa scabra
- Themeda triandra
- Rytidosperma setaceum
- Heteropogon contortus

MP03 - RIPARIAN SHRUBLAND RAINGARDEN MIX



Tristaniopsis laurina 'Luscious'



Westringia fruticosa 'Grey Box'



Lomandra spp.



Carex appressa



Carex fascicularis



Dianella revoluta



Juncus usitatus



Themedia triandra



Poa labillardierei

OCULUS

oculus info
ABN 34 074 882 447

wsp

This drawing is to be read in conjunction with all landscape architecture schedules, technical specifications, and other consultant drawings. Please check and verify all dimensions and site conditions prior to the commencement of any work. Do not scale drawings – refer to signed dimensions only. Please inform OCULUS of any discrepancies for clarification before proceeding. Unless otherwise noted this drawing is not for construction. Services shown on this drawing are approximate only. The exact location is to be confirmed on-site by contractor prior to commencement – before you dig (byla.com.au). © 2024

KEY PLAN

SCALE
N.T.S

PROJECT SM-021
MONARO ST UPGRADE
MONARO ST, GUNAWATYAN

STATUS
PRELIMINARY ONLY

CLIENT
GUNAWATYAN/PALEANG REGIONAL COUNCIL
COLLABORATOR(S)
WSP

| ISSUE | DATE | AMENDMENT | BY | APPROVED |
|-------|----------|--------------------------------|----|----------|
| A | 11.12.14 | ISSUE FOR 100% DETAILED DESIGN | FB | BRG |
| | | | | |
| | | | | |
| | | | | |
| | | | | |
| | | | | |
| | | | | |
| | | | | |
| | | | | |
| | | | | |

DRAWING TITLE
PLANTING PALETTE

DRAWING NUMBER
L004
REVISION
A

MONARO STREET UPGRADE

| CODE | DESCRIPTION | DETAILS |
|-----------------------|------------------------------------------|--------------------------------------------------------------------------------------------------------------------------------------------------------------------------------------------------------------------------------------------------------------------------------------------------------------------------------------------------------------------------------|
| SURFACE | | |
| PV01 | GRANITE PAVERS - GREY | Granite pavers, laid in stretcher bond as detailed. P5 Slip Rating. Thickness: 60mm Size: 600x600mm Colour: Ash Grey Finish: Bushhammered Supplier: Sam the Paving Man |
| PV02 | FILLETTI PAVERS | Fillett stone pavers, laid in stretcher bond as detailed. P5 Slip Rating. Thickness: 60mm Size: Fillett/baguettes (varies, typically 120mmx200-400mm) Colour: Dark Grey (to match ash black granite) Finish: Natural split Mortar: Grey to match paver, recessed 3mm Supplier: Graniteworks or approved equivalent |
| PV03 | GRANITE PAVERS - DARK GREY | Granite pavers, laid in stretcher bond as detailed. P5 Slip Rating. Thickness: 60mm Size: 600x600mm Colour: Ash Black Finish: Exfoliated Supplier: Sam the Paving Man |
| PV04 | ASPHALT | Asphalt road paving. Refer civil engineer's documentation. |
| PV05 | PRECAST CONCRETE RAIN GARDEN CROSSINGS | Precast concrete planks from car park to footpath etched at angle to meet pavers, oxide colouring: CCS Pistachio (TBC). P5 Slip Rating. |
| TA01 | TACTILE GROUND INDICATOR STUDS | Granite stone integrated tactile ground indicator studs Colour: TBC, ensure 70/30 contrast illuminance Finish: Exfoliated to P5 slip rating Standards: to meet AS1428.4:2002 Tactile Indicators Supplier: UrbanStone |
| EDGES, WALLS & FENCES | | |
| ED01 | GRANITE KERB | Granite kerb to rangelandens Width: 150mm Colour: Ash Black Finish: Exfoliated Supplier: Sam the Paving Man |
| WL01 | PRECAST CONCRETE WALL - STRAIGHT SECTION | Precast Class 2 concrete seating wall - straight sections. Size: varies(L) x 385 (H) Colour: Oxide colouring: CCS Pistachio (TBC) Finish: Grit blast artistic etching Supplier: Holcim, Concrete Colour Systems |
| WL02 | PRECAST CONCRETE WALL - CURVED SECTION | Precast Class 2 concrete seating wall - curved sections. Size: varies(L) x 385(H) Colour: Oxide colouring: CCS Pistachio (TBC) Finish: Grit blast artistic etching Supplier: Holcim, Concrete Colour Systems |

| | | |
|------------------|------------------------------|----------------------------------------------------------------------------------------------------------------------------------------------------------------------------------------------------------------------------------------------------------------------------------------------|
| FURNITURE | | |
| FN01 | STRAIGHT SEAT | Linear straight plinth mounted timber batten seat, with armrests. Mounted to WL01. Battens: Aluminium Woodgrain, Spotted Gum (horizontal) Frame: Stainless 304 Powdercoated, colour Textura Dark Bronze (TBC) Supplier: Street Furniture Australia |
| FN02 | CURVED SEAT | Linear curved plinth mounted timber batten seat, with armrest. Mounted to WL02. Battens: Aluminium Woodgrain, Spotted Gum (horizontal) Frame: Stainless 304 Powdercoated, colour Textura Dark Bronze (TBC) Supplier: Street Furniture Australia |
| FN03 | COFFEE TABLE | Plato round coffee table, solid top. Subsurface fixing. Size: 720mm(H) x 805mm(W) Finish: Aluminium powder coated, colour: Textura Jasper (TBC) Supplier: Street Furniture Australia |
| FN04 | BOLLARD LUMINAIRE | Features luminaire bollard with illuminated artwork. Subsurface fixing. Size: 1205 1400mm(H) x 300mm(W) Artwork: Bapsko artwork coordinated with OPC, TBC Finish: Powdercoat Dark Bronze to match bollard (TBC) Refer lighting engineer's documentation |
| FN05 | BOLLARD | Linear bollard with integrated artwork etchings. Subsurface fixing. Size: 910mm(H) x 115mm(W) Inset: Aluminium woodgrain with laser etching Frame: Stainless 304 Powdercoated, colour Textura Dark Bronze (TBC) Supplier: Street Furniture Australia |
| FN06 | BIN | Round Moonson bin. Subsurface fixing. Size: 80L Body Finish: Fluted, Powdercoat Textura Jasper Roof Finish: Powdercoat Textura Dark Bronze Supplier: Street Furniture Australia |
| FN07 | DRINKING FOUNTAIN | Arque water drinking fountain with dog bowl. Subsurface fixing. Finish: Textura Dark Bronze (TBC) Supplier: Street Furniture Australia |
| FN08 | BICYCLE STAND | Linear Bicycle Stand. Subsurface fixing. Size: 600mm(L) x 75mm(W) x 700mm(H) Finish: Powdercoat Textura Dark Bronze (TBC) Supplier: Street Furniture Australia |
| FN09 | LIGHT POST | Light post. Refer Lighting Engineer's documentation Finish: Dark Bronze powdercoat to match bollard.(TBC) |
| SOFT LANDSCAPING | | |
| MP01 | MASS PLANTING TYPE 01 | High Street Native Planting Mx - Native grass & shrub species |
| MP02 | MASS PLANTING TYPE 02 | High Street Median Planting Mx - Native grass species Mulch: Stone pebble mulch from recycled granite pavers removed from site |
| MP03 | MASS PLANTING TYPE 03 | High Street WSUD Planting Mx - Native drought & flood tolerant species |
| TP01 | PROPOSED TREE | Refer tree planting schedule |
| TP02 | EXISTING TREE TO BE RETAINED | Tree to be retained |
| TP03 | EXISTING TREE TO BE REMOVED | Tree to be removed |

OCULUS

oculus info
ABN 34 074 882 447

wsp

This drawing is to be read in conjunction with all landscape architecture schedules, technical specifications, and other consulted drawings. Please check and verify all dimensions and site conditions prior to the commencement of any work. Do not make drawings - refer to signed dimensions only. Please inform OCULUS of any discrepancies for clarification before proceeding. Unless otherwise noted this drawing is not for construction. Services shown on the drawing are approximate only. The exact location is to be confirmed on-site by contractor prior to commencement - before you dig (byda.com.au). © 2024

KEY PLAN

SCALE
N.T.S

PROJECT SH-001
MONARO ST UPGRADE
MONARO ST, GUNAWAN

STATUS
PRELIMINARY ONLY

CLIENT
GUNAWAN/PALEANG REGIONAL COUNCIL
COLLABORATOR(S)
WSP

| ISSUE | DATE | AMENDMENT | BY | APPROVED |
|-------|----------|--------------------------------|----|----------|
| A | 02.12.24 | ISSUE FOR COSTINGS | FB | MS |
| B | 11.10.14 | ISSUE FOR 100% DETAILED DESIGN | FB | MS |
| | | | | |
| | | | | |
| | | | | |
| | | | | |
| | | | | |
| | | | | |
| | | | | |
| | | | | |

| | |
|----------------|------------------------|
| DRAWING TITLE | MATERIALS AND FINISHES |
| SCHEDULE | |
| DRAWING NUMBER | L005 |
| REVISION | A |

9.5 Monaro Street Upgrade - Detailed Design
Attachment 1 - Monaro Street Upgrade - Landscape design - Option 1 (Continued)

Table with 4 columns: Code, Tree Species, Pot Size (mm), Quantity. Rows include TL (Tristaniopsis Laurina 'Luscious'), QP (Quercus palustris), MIMQ (Melaleuca 'Mini Quini'), FP (Fraxinus pennsylvanica 'Urbdeil').

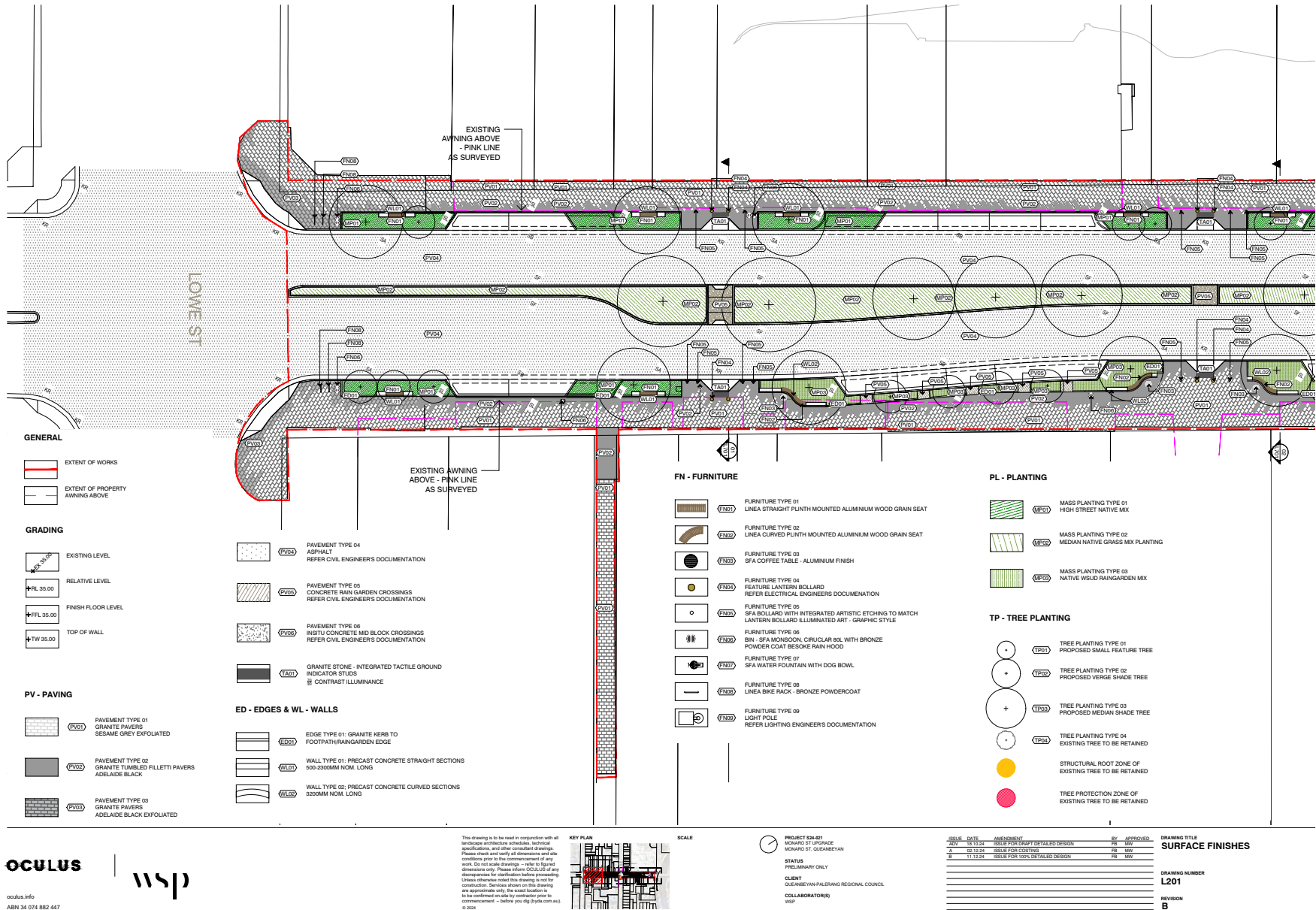
Table with 5 columns: Botanical Name, Common Name, Planting Height (m), Planting Spread (m), Pot size (mm), Quantity. Sections include PLANTING MIXES, SOUTHWEST TABLELAND GORGES RIPARIAN SHRUBLAND (MP01), SOUTHERN TABLELAND GRASSY BOX WOODLAND (MP02), and RIPARIAN SHRUBLAND RAINGARDEN MIX (MP03).

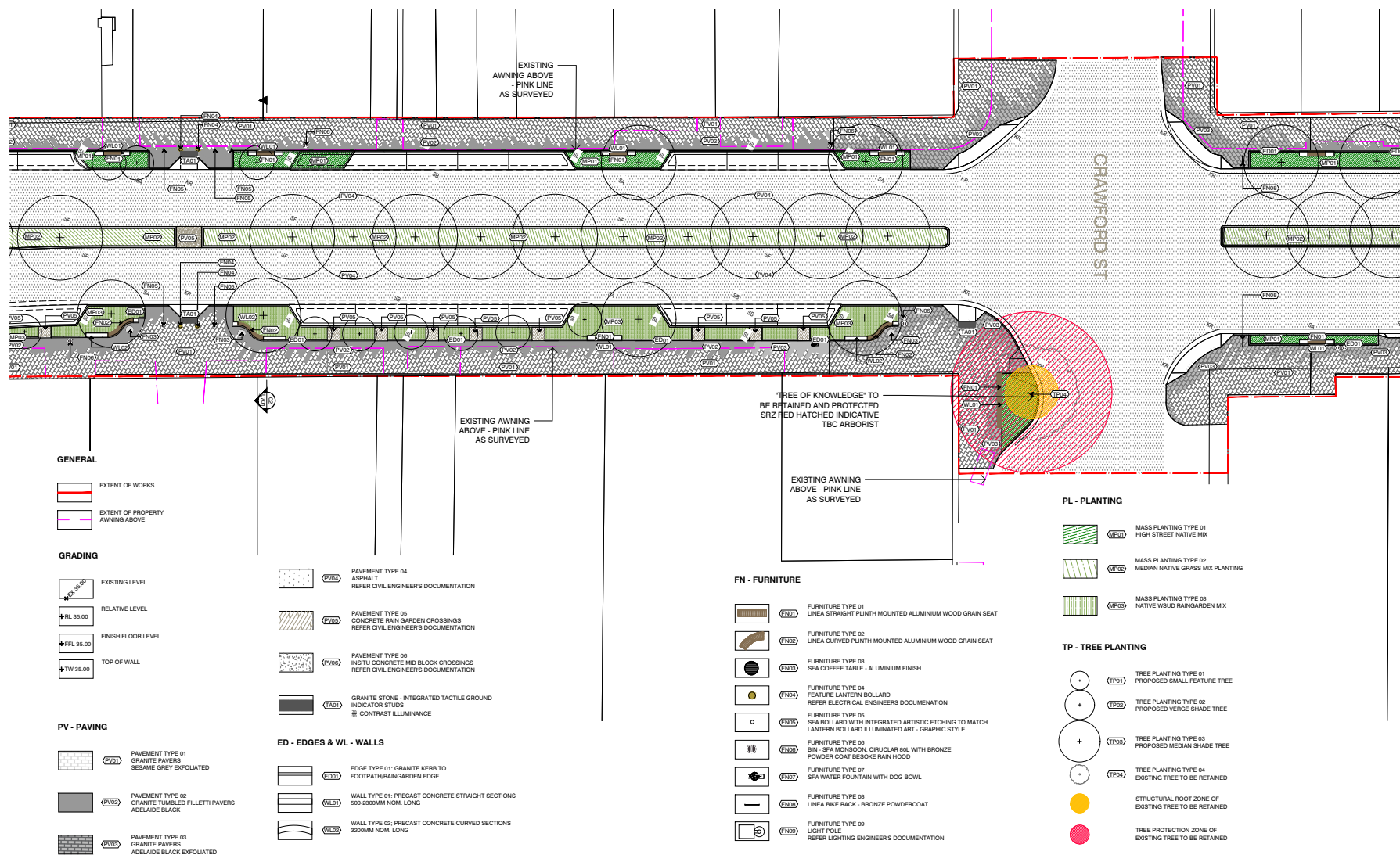
Table with 4 columns: Botanical Name, Common Name, Planting Height, Planting Spread. Sections include PLANTING SCHEDULE, TREES *, SHRUBS, GRASSES, GROUND COVER, and CLIMBERS.

* Advanced stock required. 400L in raingarden areas, 1000L in median

OCULUS | wsp
This drawing is to be read in conjunction with all landscape architecture schedules, technical specifications, and other consulted drawings.
KEY PLAN, SCALE: N.T.S., PROJECT: SM-001 MONARO ST UPGRADE, ISSUE: 02.12.24, DRAWING TITLE: PLANTING SCHEDULE, DRAWING NUMBER: L006, REVISION: A

9.5 Monaro Street Upgrade - Detailed Design
Attachment 1 - Monaro Street Upgrade - Landscape design - Option 1 (Continued)

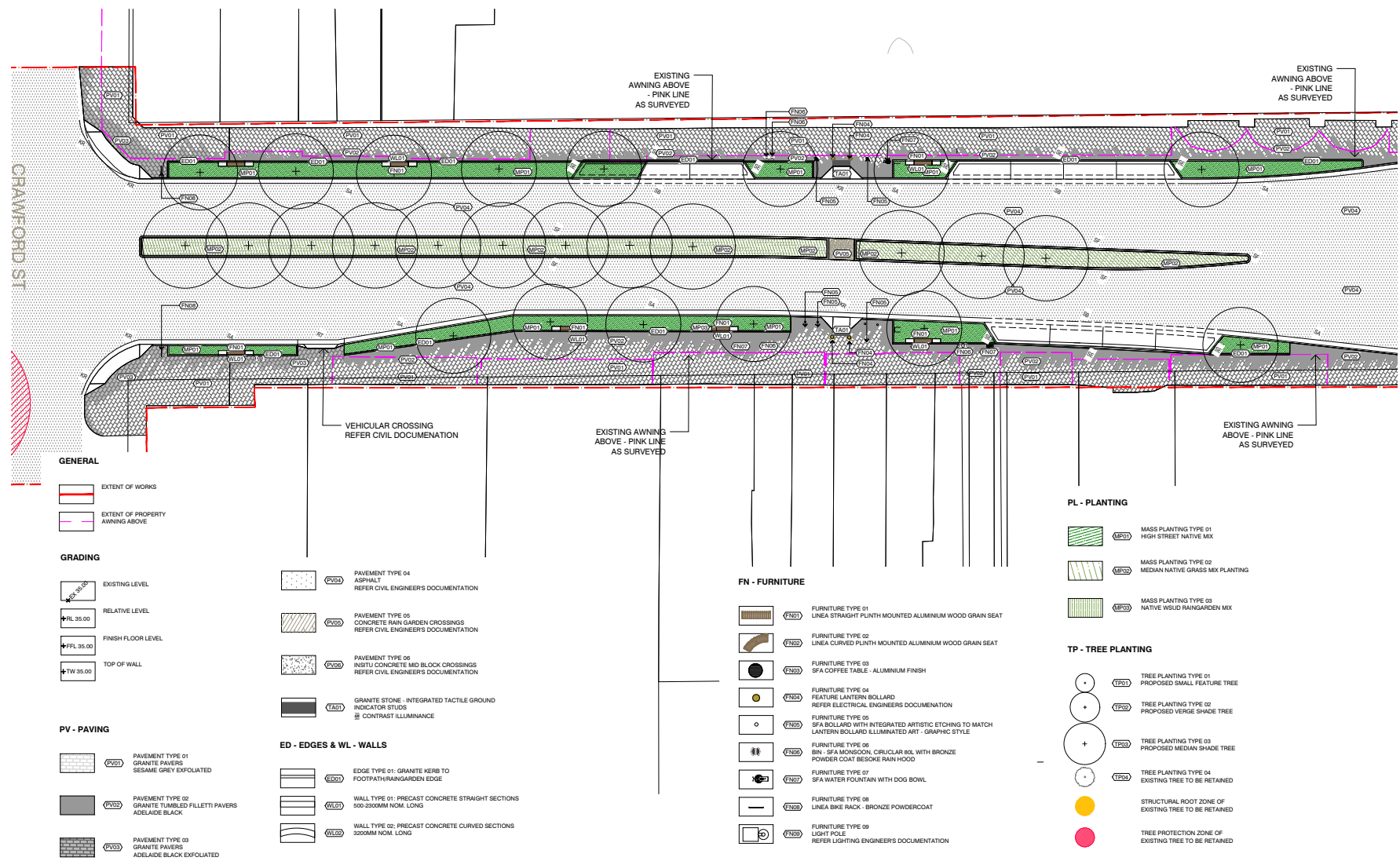


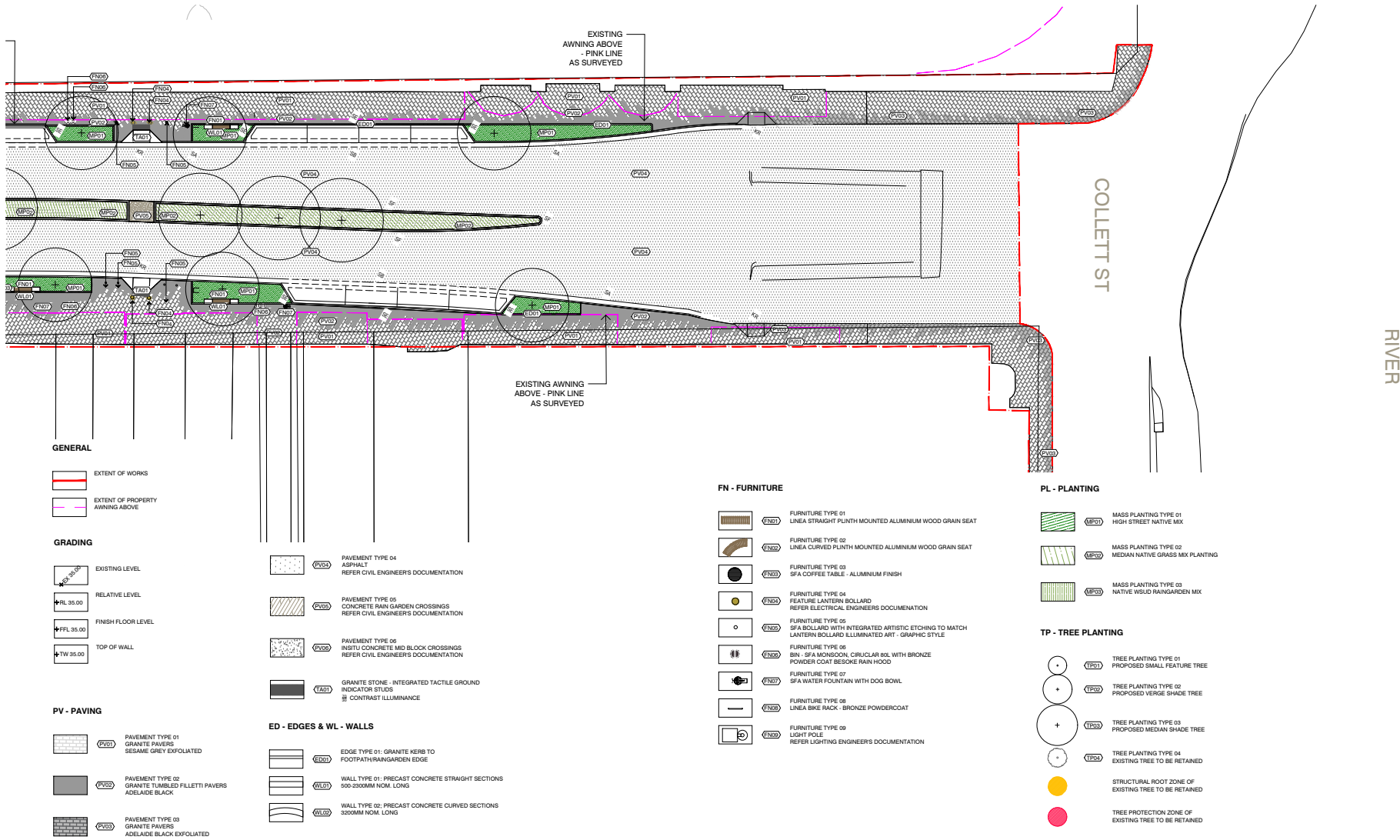


OCULUS

oculus info
ABN 34 074 882 447

wsp





This drawing is to be read in conjunction with all landscape architecture schedules, technical specifications, and other consultant drawings. Please check and verify all dimensions and site conditions prior to the commencement of any work. Do not make drawings - note to signed dimensions only. Please inform OCULUS of any discrepancies for rectification before proceeding. Unless otherwise noted this drawing is not for construction. Services shown on this drawing are approximate only. The exact location is to be confirmed on-site by contractor prior to commencement - before you dig (bydla.com.au) © 2024

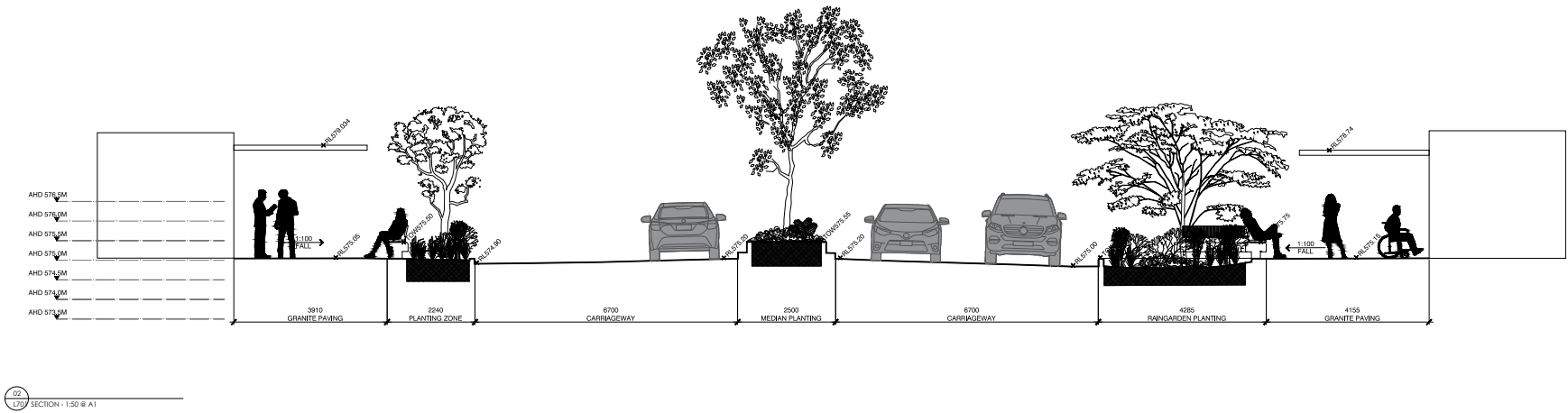
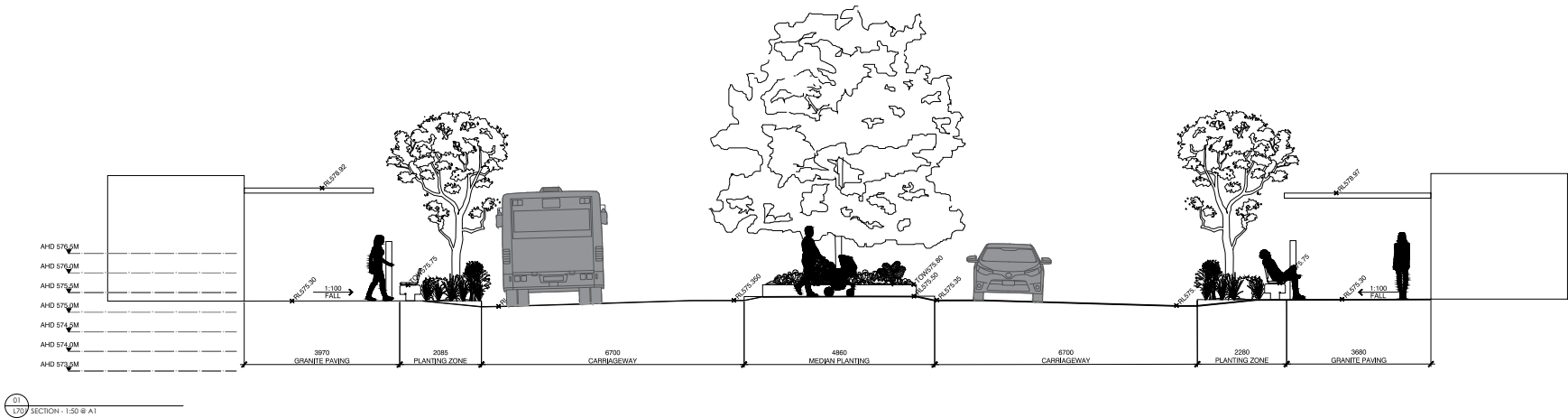


SCALE

PROJECT S24-01
MONARO ST UPGRADE
MONARO ST, GUNAWAYAN
STATUS
PRELIMINARY ONLY
CLIENT
COUNCIL OF MONARO VALLEY REGIONAL COUNCIL
COLLABORATOR
WSP

| ISSUE | DATE | AMENDMENT | BY | APPROVED |
|-------|----------|---------------------------------|----|----------|
| REV | 16.10.24 | ISSUE FOR DRAFT DETAILED DESIGN | FB | MS |
| 2 | 08.12.24 | ISSUE FOR CONSTRUCTION | FB | MS |
| 3 | 11.12.24 | ISSUE FOR 100% DETAILED DESIGN | FB | MS |

DRAWING TITLE
SURFACE FINISHES
DRAWING NUMBER
L204
REVISION
B



OCULUS | **wsp**

oculus info
ABN 34 074 882 447

This drawing is to be read in conjunction with all landscape architecture schedules, technical specifications, and other consultant drawings. Please check and verify all dimensions and site conditions prior to the commencement of any work. Do not make drawings - refer to signed dimensions only. Please inform OCULUS of any discrepancies for information before proceeding. Unless otherwise noted this drawing is not for construction. Services shown on this drawing are approximate only. The exact location is to be confirmed on-site by contractor prior to commencement - before you dig (byla.com.au) © 2024

KEY PLAN

SCALE
1:50 @ A1

PROJECT SM-021
MONARO ST UPGRADE
MONARO ST, GUNAWAN

STATUS
PRELIMINARY ONLY

CLIENT
GUNAWAN/PALEFRANK REGIONAL COUNCIL

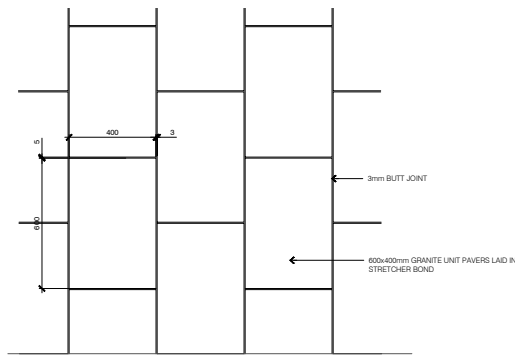
COLLABORATOR
WSP

| ISSUE | DATE | AMENDMENT | BY | APPROVED |
|-------|----------|--------------------------------|----|----------|
| A | 11.10.24 | ISSUE FOR 100% DETAILED DESIGN | FB | BM |
| | | | | |
| | | | | |
| | | | | |
| | | | | |
| | | | | |
| | | | | |
| | | | | |

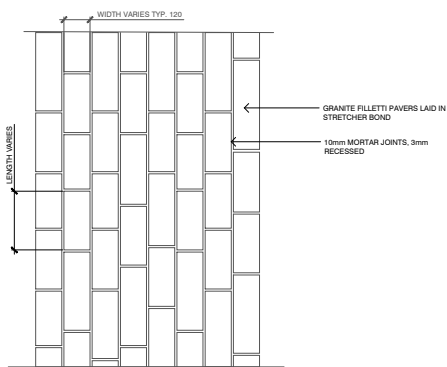
DRAWING TITLE
SECTIONS AND ELEVATIONS

DRAWING NUMBER
L701

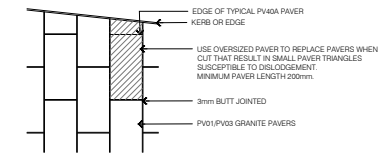
REVISION
A



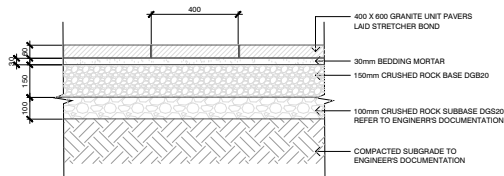
01 PV01, PV03 - GRANITE UNIT PAVING AT GRADE
PLAN - 1:10 @ A1



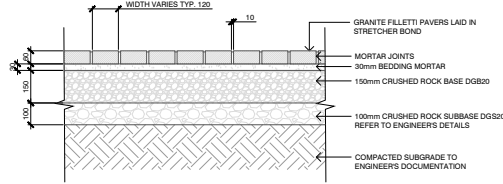
02 PV02 - FILLETTI (SMALL UNIT) PAVERS AT GRADE
TYPICAL PLAN - 1:10 @ A1



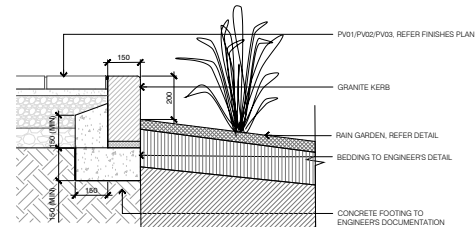
03 PV01, PV03 - OVERSIZED GRANITE UNIT PAVER - TYPICAL PLAN
PLAN - 1:20 @ A1



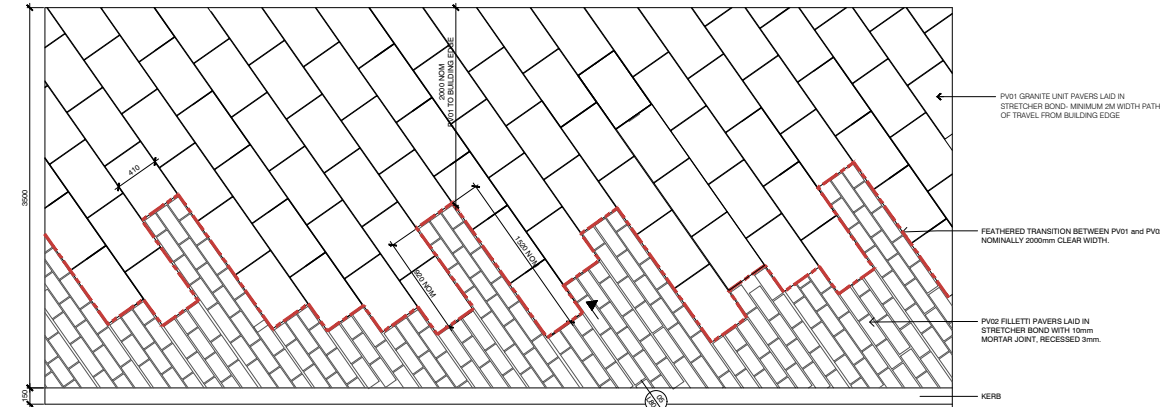
04 PV01, PV03 - GRANITE UNIT PAVING AT GRADE
SECTION - 1:10 @ A1



05 PV02 - FILLETTI (SMALL UNIT) PAVERS AT GRADE
SECTION - 1:10 @ A1



06 ED01 - GRANITE KERB
SECTION - 1:10 @ A1



07 TYPICAL PAVING LAYOUT - NORTHERN FOOTPATH
PLAN - 1:20 @ A1

OCULUS

OCULUS INFO
ABN 34 074 882 447

wsp

This drawing is to be read in conjunction with all landscape architecture schedules, technical specifications, and other consultant drawings. Please check and verify all dimensions and site conditions prior to the commencement of any work. Do not make drawings - refer to signed dimensions only. Please inform OCULUS of any discrepancies for clarification before construction. Unless otherwise noted this drawing is not for construction. Services shown on this drawing are approximate only, the exact location is to be confirmed on-site by contractor prior to commencement - before you dig (bydla.com.au) © 2024

KEY PLAN

SCALE
AS SHOWN

PROJECT S24-021
MONARO ST UPGRADE
MONARO ST, GUNAWAYAN

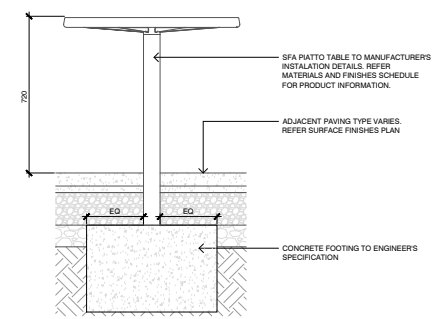
STATUS
PRELIMINARY ONLY

CLIENT
GUNAWAYAN/PALFRANING REGIONAL COUNCIL
COLLABORATOR(S)
WSP

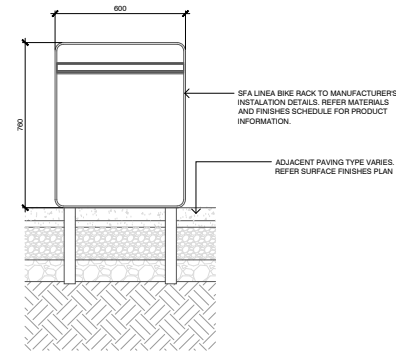
| ISSUE | DATE | AMENDMENT | BY | APPROVED |
|-------|----------|-------------------|----|----------|
| A | 03.10.24 | ISSUE FOR COSTING | PC | MB |
| B | 11.10.24 | ISSUE FOR TENDERS | PC | MB |

DRAWING TITLE
PAVING DETAILS

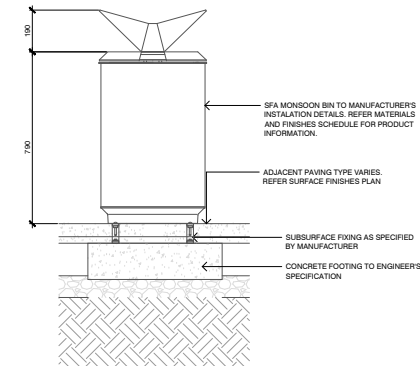
DRAWING NUMBER
L801
REVISION
B



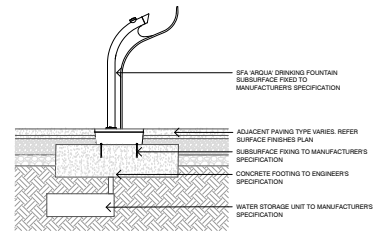
02 FN03 - SFA PIATTO TABLE
SECTION - 1:20 @ A1



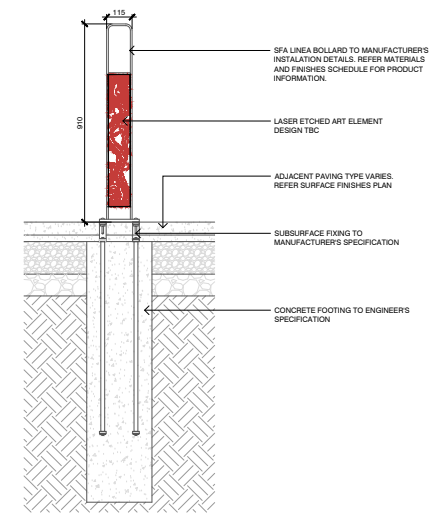
03 FN05 - SFA LINEA BIKE RACK
SECTION - 1:20 @ A1



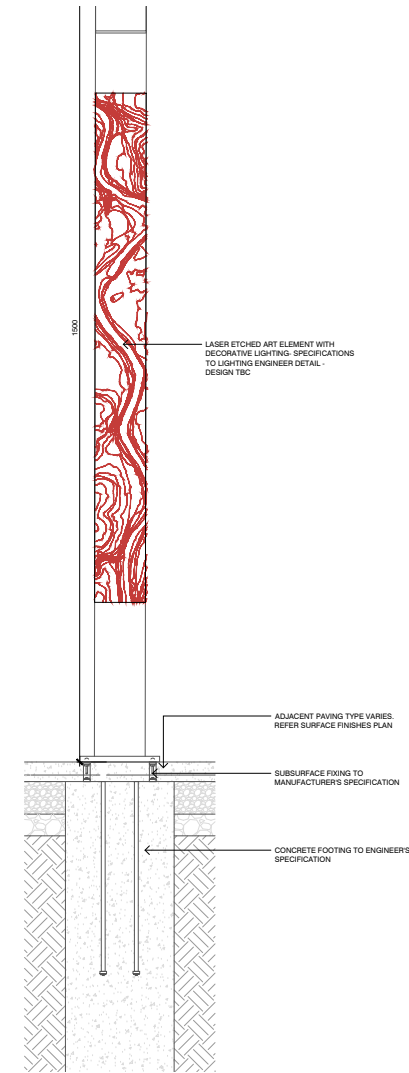
04 FN06 - SFA MONSOON BIN
SECTION - 1:20 @ A1



05 FN07 - SFA ARQUA WATER FOUNTAIN
SECTION - 1:20 @ A1

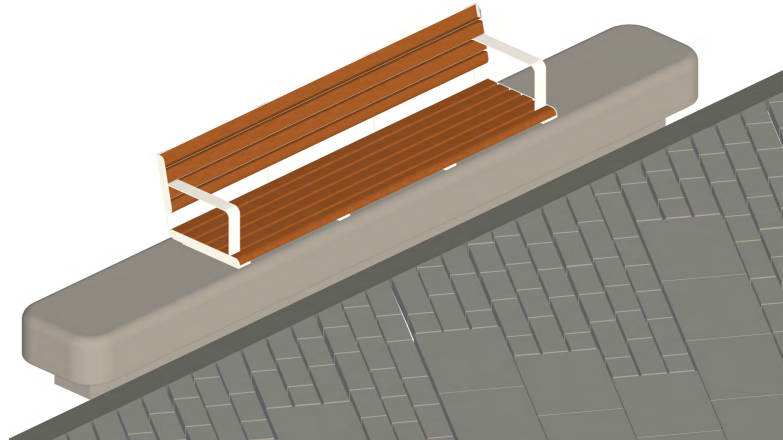
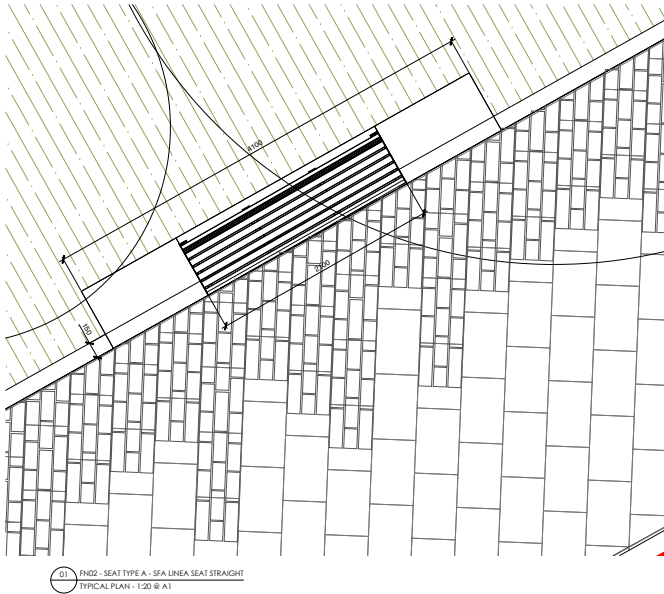
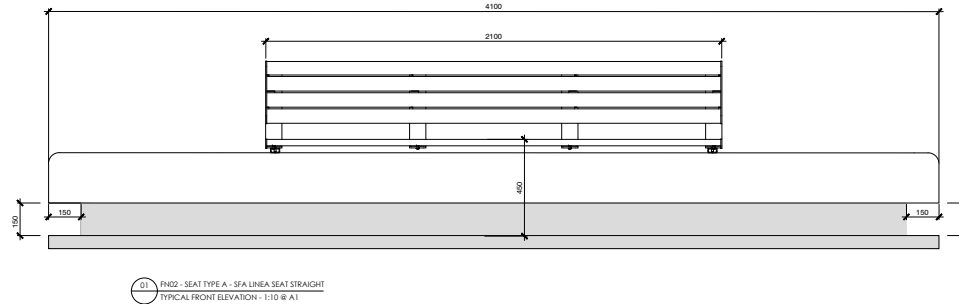
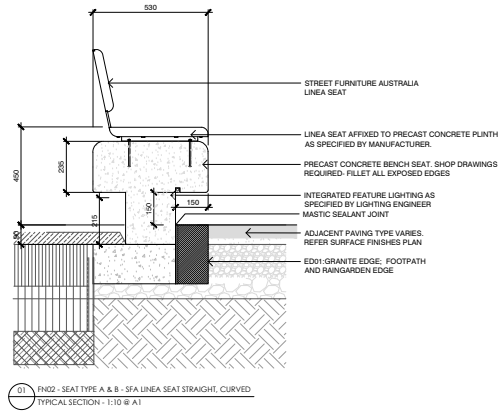


06 FN04 - LINEA BOLLARD
SECTION - 1:10 @ A1



07 FN05 - FEATURE LANTERN BOLLARD
SECTION - 1:20 @ A1

Attachment 1 - Monaro Street Upgrade - Landscape design - Option 1 (Continued)



oculus.info
ABN 34 074 882 447

ws |)

This drawing is to be read in conjunction with all landscape architecture schedules, technical specifications, and other consultant drawings. Please check and verify all dimensions and site conditions prior to the commencement of any work. Do not scale drawings – refer to figured dimensions only. Please inform OCULUS of any discrepancies for clarification before proceeding. Unless otherwise noted this drawing is not for construction. Services shown on this drawing are approximate only, the exact location is to be confirmed on-site by contractor prior to commencement – before you dig (byda.com.au).

© 2024

KEY PLAN

SCALE

AS SHOWN

PROJECT 524-021
MONARO ST UPGRADE
MONARO ST, QUEANBEYAN

STATUS
PRELIMINARY ONLY

CLIENT
QUEANBEYAN-PALERANG REGIONAL COUNCIL

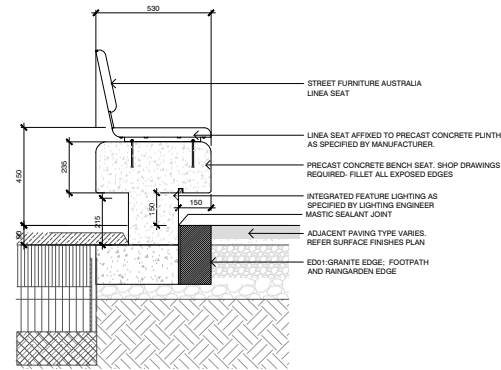
COLLABORATOR(S)
WSP

[illegible]

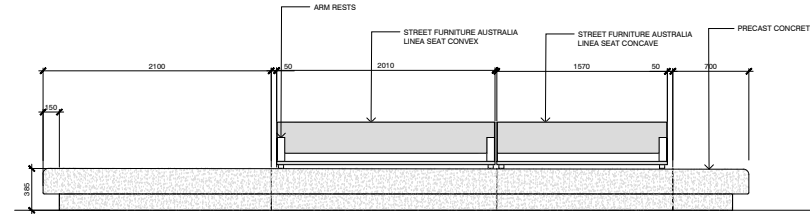
DRAWING TITLE
SEAT DETAILS

DRAWING NUMBER
L803

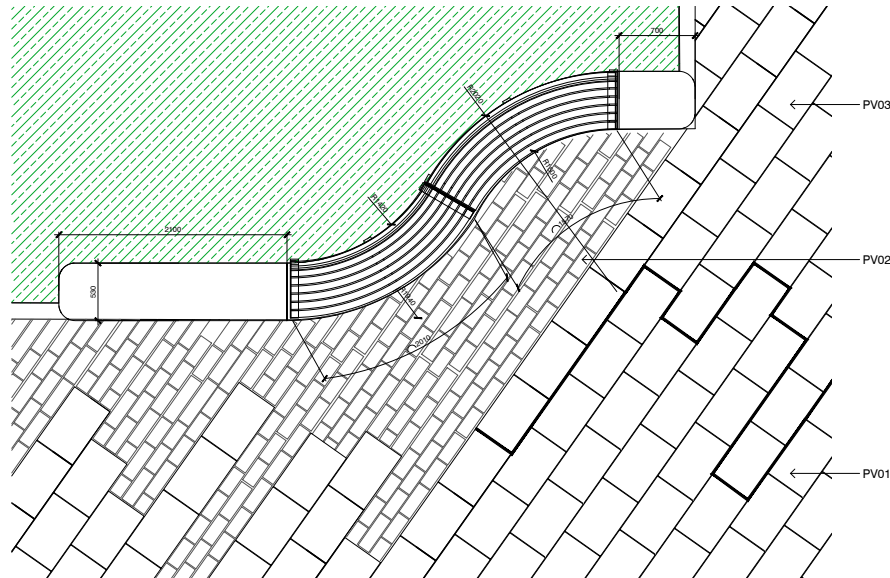
REVISION
B



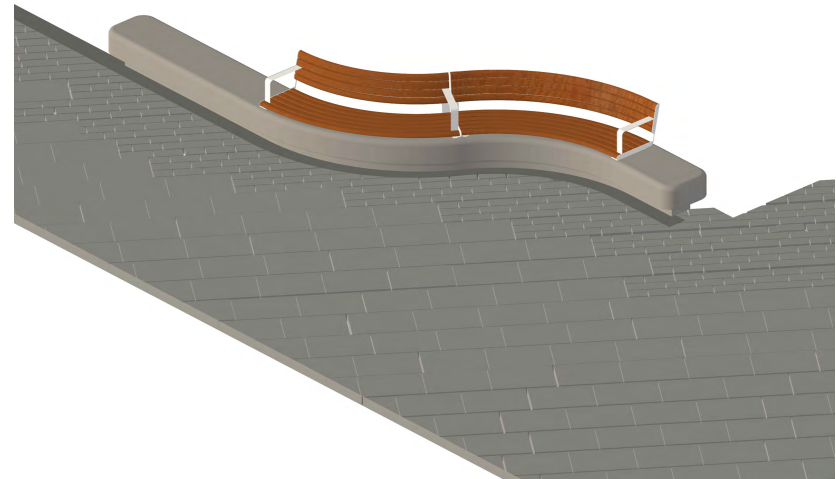
01 FN02 - SEAT TYPE A & B - SFA LINEA SEAT STRAIGHT, CURVED
TYPICAL SECTION - 1:10 @ A1



01 FN02 - SEAT TYPE B - SFA LINEA SEAT CURVED
TYPICAL UNFOLDED ELEVATION - 1:20 @ A1



02 FN02 - SEAT TYPE B - SFA LINEA SEAT CURVED (LEFT)
TYPICAL PLAN - 1:20 @ A1



01 FN02 - SEAT TYPE B - SFA LINEA SEAT CURVED (RIGHT)
TYPICAL AXONOMETRIC - 1:20 @ A1

OCULUS

oculus info
ABN 34 074 882 447

wsp

This drawing is to be read in conjunction with all landscape architecture schedules, technical specifications, and other associated drawings. Please check and verify all dimensions and site conditions prior to the commencement of any work. Do not make drawings - refer to signed dimensions only. Please inform OCULUS of any discrepancies for clarification before proceeding. Unless otherwise noted this drawing is not for construction. Services shown on this drawing are approximate only. The exact location is to be confirmed on-site by contractor prior to commencement - before you dig (bydla.com.au) © 2024

KEY PLAN

SCALE
AS SHOWN



PROJECT SH-001
MONARO ST UPGRADE
MONARO ST, GUNAWIRRYAN

STATUS
PRELIMINARY ONLY

CLIENT
GUNAWIRRYAN/PALEIRANG REGIONAL COUNCIL

COLLABORATOR
WSP

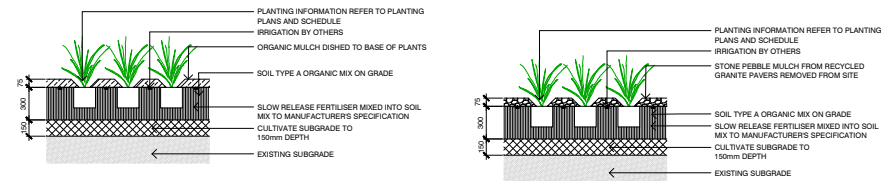
| ISSUE | DATE | AMENDMENT | BY | APPROVED |
|-------|----------|-----------------------------------|----|----------|
| A | 03.10.24 | ISSUE FOR COSTING | PC | WSP |
| B | 11.10.24 | ISSUE FOR TENDERS DETAILED DESIGN | PC | WSP |
| | | | | |
| | | | | |
| | | | | |
| | | | | |
| | | | | |
| | | | | |
| | | | | |
| | | | | |

DRAWING TITLE
SEAT DETAILS

DRAWING NUMBER
L804

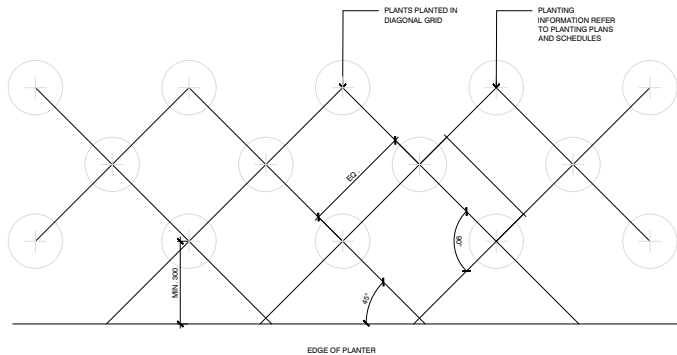
REVISION
B

9.5 Monaro Street Upgrade - Detailed Design
Attachment 1 - Monaro Street Upgrade - Landscape design - Option 1 (Continued)

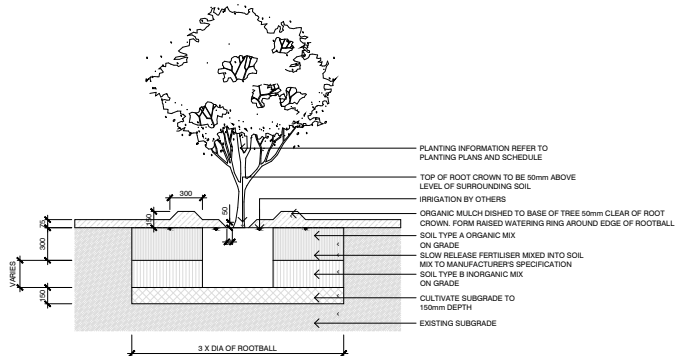


01 MP01 - MASS PLANTING ON GRADE
SECTION - 1:20 @ A1

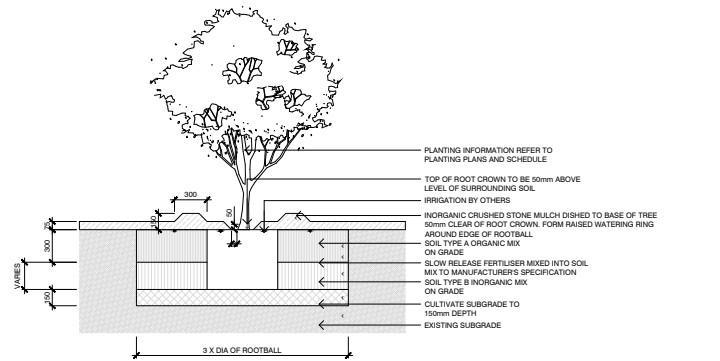
02 MP02 - MASS PLANTING ON GRADE IN MEDIAN
SECTION - 1:20 @ A1



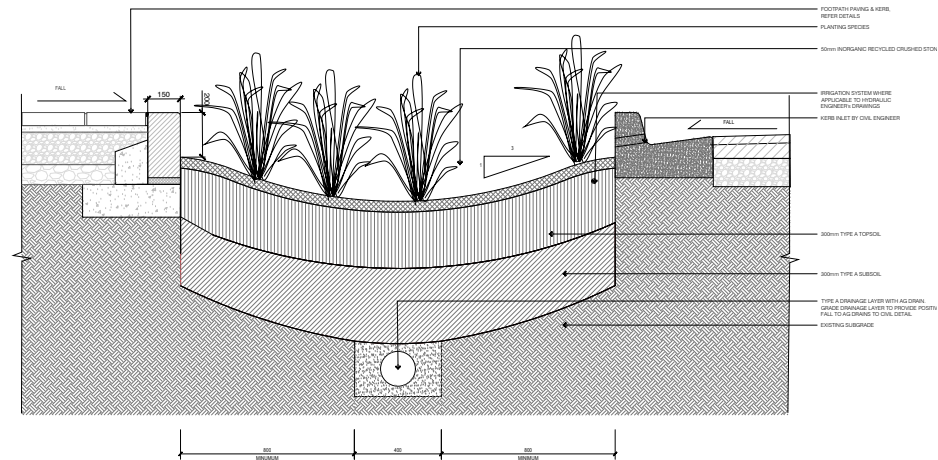
03 MS01 - MASS PLANTING SETOUT
SECTION - 1:20 @ A1



04 TP01 - TREE PLANTING ON GRADE
SECTION - 1:20 @ A1



05 TP01 - TREE PLANTING ON GRADE IN MEDIAN
SECTION - 1:20 @ A1



06 MP03 - WSUD RAIN GARDEN TYPICAL DETAIL
SECTION - 1:10 @ A1

QUEANBEYAN-PALERANG REGIONAL COUNCIL

Council Meeting Attachment

29 JANUARY 2025

ITEM 9.5 MONARO STREET UPGRADE - DETAILED DESIGN

ATTACHMENT 2 MONARO STREET UPGRADE - LANDSCAPE DESIGN -
OPTION 2

MONARO STREET UPGRADE QUEANBEYAN, NSW

LANDSCAPE ARCHITECTURE: OPTION 2 DETAILED DESIGN FOR COSTING

LOCATION PLAN



DRAWING SCHEDULE

[illegible]

NOTES

1. THIS DRAWING IS TO BE READ IN CONJUNCTION WITH ALL LANDSCAPE ARCHITECTURE SCHEDULES, TECHNICAL SPECIFICATIONS, AND OTHER CONSULTANT DRAWINGS. PLEASE CHECK AND VERIFY ALL DIMENSIONS AND SITE CONDITIONS PRIOR TO THE COMMENCEMENT OF ANY WORK. DO NOT SCALE DRAWINGS; REFER TO FIGURED DIMENSIONS ONLY. PLEASE INFORM OCULUS OF ANY DISCREPANCIES FOR CLARIFICATION BEFORE PROCEEDING. UNLESS OTHERWISE NOTED THIS DRAWING IS NOT FOR CONSTRUCTION. SERVICES SHOWN ON THIS DRAWING ARE APPROXIMATE ONLY; THE EXACT LOCATION IS TO BE CONFIRMED ON-SITE BY CONTRACTOR PRIOR TO COMMENCEMENT. DIAL BEFORE YOU DIG.

LEGEND

GENERAL

Diagram showing extent of works and extent of property awning above.

GRADING

Diagram showing existing level, relative level, finish floor level, top of wall, and base of wall.

PV - PAVING

Diagram showing various paving types: PV01 (Concrete Unit Pavers Grey), PV02 (Concrete Unit Pavers Dark Grey), PV03 (In Situ Concrete Grey), PV04 (Existing Carriageway Finish), and TA01 (Granite Stone - Integrated Tactile Ground Indicator Studs).

ED - EDGES & WL - WALLS

Diagram showing wall type 01: precast concrete straight sections.

FN - FURNITURE

Diagram showing various furniture types: FN01 (Linea Straight Plinth Mounted Aluminum Wood Grain Seat), FN02 (SFA Bollard with Integrated Artistic Etching), FN03 (Bin - SFA Monsoon, Circular 80L with Bronze Powder Coat Besoke Rain Hood), FN04 (SFA Water Fountain with Dog Bowl), and FN05 (Light Pole).

PL - PLANTING

Diagram showing mass planting types: MP01 (High Street MX) and MP02 (High Street Median MX).

TP - TREE PLANTING

Diagram showing tree planting types: TP01 (Proposed Small Feature Tree), TP02 (Proposed Verge Shade Tree), TP03 (Proposed Median Shade Tree), and TP04 (Existing Tree to be Retained).

OCULUS

oculus info
ABN 34 074 882 447

wsp

This drawing is to be read in conjunction with all landscape architecture schedules, technical specifications, and other consultant drawings. Please check and verify all dimensions and site conditions prior to the commencement of any work. Do not scale drawings - refer to signed dimensions only. Please inform OCULUS of any discrepancies for confirmation before proceeding. Unless otherwise noted this drawing is not for construction. Services shown on this drawing are approximate only. The exact location is to be confirmed on-site by contractor prior to commencement - before you dig (byda.com.au). © 2024

KEY PLAN

SCALE
N.T.S

PROJECT S24-021
MONARO ST UPGRADE
MONARO ST, GUNAWAYAN

STATUS
PRELIMINARY ONLY

CLIENT
GUNAWAYAN/ALLENBY REGIONAL COUNCIL
COLLABORATOR(S)
WSP

Table with 4 columns: ISSUE, DATE, AMENDMENT, BY. It tracks design development and construction issues.

DRAWING TITLE
LEGEND

DRAWING NUMBER
L001
REVISION
B

9.5 Monaro Street Upgrade - Detailed Design
Attachment 2 - Monaro Street Upgrade - Landscape design - Option 2 (Continued)

| CODE | DESCRIPTION | DETAILS |
|-----------------------|--------------------------------|------------------------------------------------------------------------------------------------------------------------------------------------------------------------------------------------------------------------------------------------------------------|
| SURFACE | | |
| PV01 | CONCRETE PAVERS - GREY | Concrete pavers, laid in stretcher bond as detailed. P5 Slip Rating. Thickness: 60mm Size: 600x400mm Colour: Merlo Finish: Hammered Supplier: Stonekast |
| PV02 | CONCRETE PAVERS - DARK GREY | Concrete pavers, laid in stretcher bond as detailed. P5 Slip Rating. Thickness: 60mm Size: 600x400mm Colour: Cathedral Finish: Shot Supplier: Stonekast |
| PV03 | INSITU CONCRETE | Mid-block pedestrian crossings surface treatment. Refer civil |
| PV04 | EXISTING CARRIAGEWAY FINISH | Refer civil engineer's documentation. |
| TA01 | TACTILE GROUND INDICATOR STUDS | Concrete integrated tactile ground indicator studs Colour: TBC, ensure 70/30 contrast luminance Finish: Exfoliated to P5 slip rating Standard: to meet AS1428.4.202 Tactile Indicators Supplier: UrbanStone |
| EDGES, WALLS & FENCES | | |
| WL01 | INSITU CONCRETE WALL | In situ Class 2 concrete seating wall Colour: Oxide colouring: CCS Petachio Finish: Light acid wash to expose aggregate Supplier: Holcim, Concrete Colour Systems |
| FURNITURE | | |
| FN01 | STRAIGHT SEAT | Linear straight plinth mounted timber batten seat, with armrests. Mounted to WL01. Battens: Aluminium Woodgrain, Spotted Gum (horizontal) Frame: Stainless 304 Powdercoated, colour Textura Dark Bronze (TBC) Supplier: Street Furniture Australia |
| FN02 | BOLLARD | Linear bollard with integrated artwork etchings. Subsurface fixing. Size: 910mm(H) x 115mm(W) Inset: Aluminium woodgrain with laser etching Frame: Stainless 304 Powdercoated, colour Textura Dark Bronze (TBC) Supplier: Street Furniture Australia |
| FN03 | BIN | Round 'Monsoon' bin. Subsurface fixing. Size: 80L Body Finish: Fluted, Powdercoat Textura Jasper Roof Finish: Powdercoat Textura Dark Bronze Supplier: Street Furniture Australia |
| FN04 | DRINKING FOUNTAIN | 'Arqua' water drinking fountain with dog bowl. Subsurface fixing. Finish: Textura Dark Bronze (TBC) Supplier: Street Furniture Australia |
| FN05 | LIGHT POST | Light post. Refer Lighting Engineer's documentation Finish: Dark Bronze powdercoat to match bollard. (TBC) |
| SOFT LANDSCAPING | | |
| MP01 | MASS PLANTING TYPE 01 | High Street Planting Mix |
| MP02 | MASS PLANTING TYPE 02 | High Street Median Planting Mix Mulch: Stone pebble mulch from recycled granite pavers removed from site |
| TP01 | PROPOSED TREE | Refer tree planting schedule |
| TP02 | EXISTING TREE TO BE RETAINED | Tree to be retained |

OCULUS

oculus info
ABN 34 074 882 447

wsp

This drawing is to be read in conjunction with all landscape architecture schedules, technical specifications, and other consulted drawings. Please check and verify all dimensions and site conditions prior to the commencement of any work. Do not make drawings - refer to signed dimensions only. Please inform OCULUS of any discrepancies for clarification before proceeding. Unless otherwise noted this drawing is not for construction. Services shown on the drawing are approximate only. The exact location is to be confirmed on-site by contractor prior to commencement - before you dig (byla.com.au). © 2024

KEY PLAN

SCALE
N.T.S

PROJECT S24-021
MONARO ST UPGRADE
MONARO ST, GUNAWIRRYAN

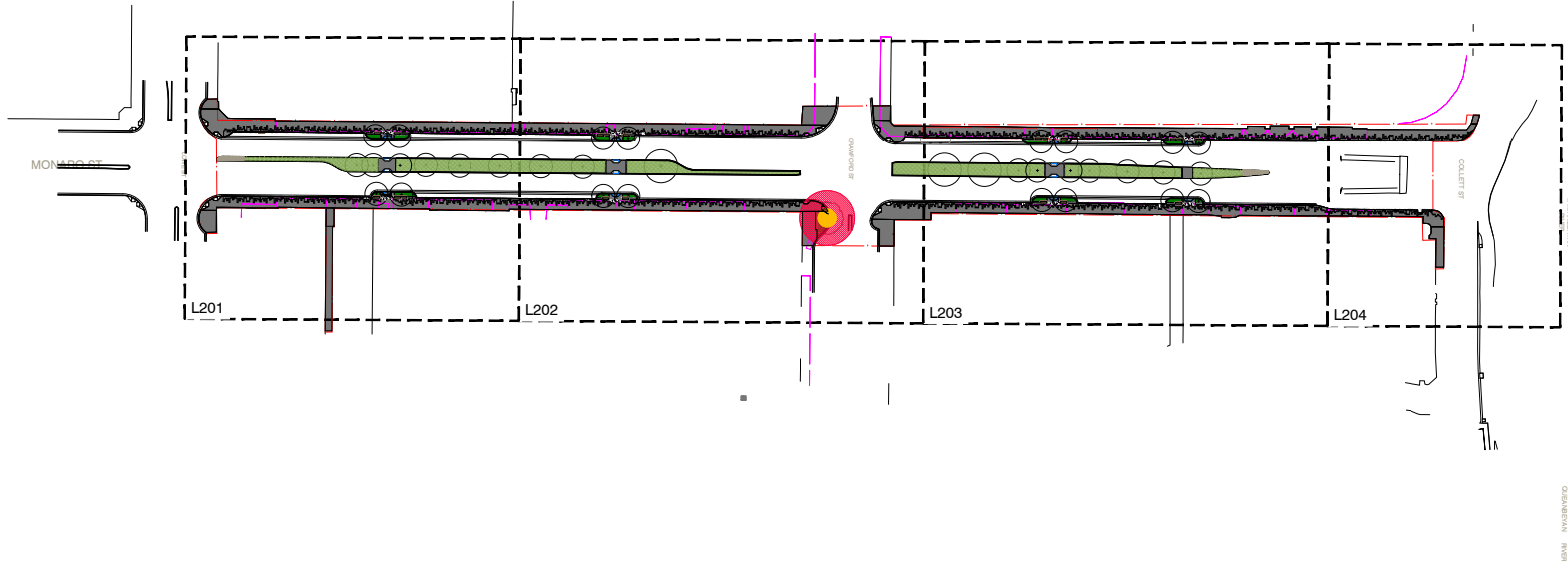
STATUS
PRELIMINARY ONLY

CLIENT
GUNAWIRRYAN/ALLENBY REGIONAL COUNCIL
COLLABORATOR(S)
WSP

| ISSUE | DATE | AMENDMENT | BY | APPROVED |
|-------|----------|--------------------------------------|----|----------|
| A | 02.12.24 | ISSUE FOR TENDERS DESIGN DEVELOPMENT | FC | MR |
| B | 12.12.24 | ISSUE FOR COSTING | FC | MR |
| | | | | |
| | | | | |
| | | | | |
| | | | | |
| | | | | |
| | | | | |
| | | | | |

DRAWING TITLE
MATERIAL SCHEDULE

DRAWING NUMBER
L002
REVISION
B



OCULUS
oculus info
ABN 34 074 882 447

wsp

This drawing is to be read in conjunction with all landscape architecture schedules, technical specifications, and other consultant drawings. Please check and verify all dimensions and site conditions prior to the commencement of any work. Do not make drawings - refer to signed dimensions only. Please inform OCULUS of any discrepancies for information before proceeding. Unless otherwise noted this drawing is not for construction. Services shown on this drawing are approximate only. The exact location is to be confirmed on-site by contractor prior to commencement - before you dig (hydra.com.au). © 2024

KEY PLAN



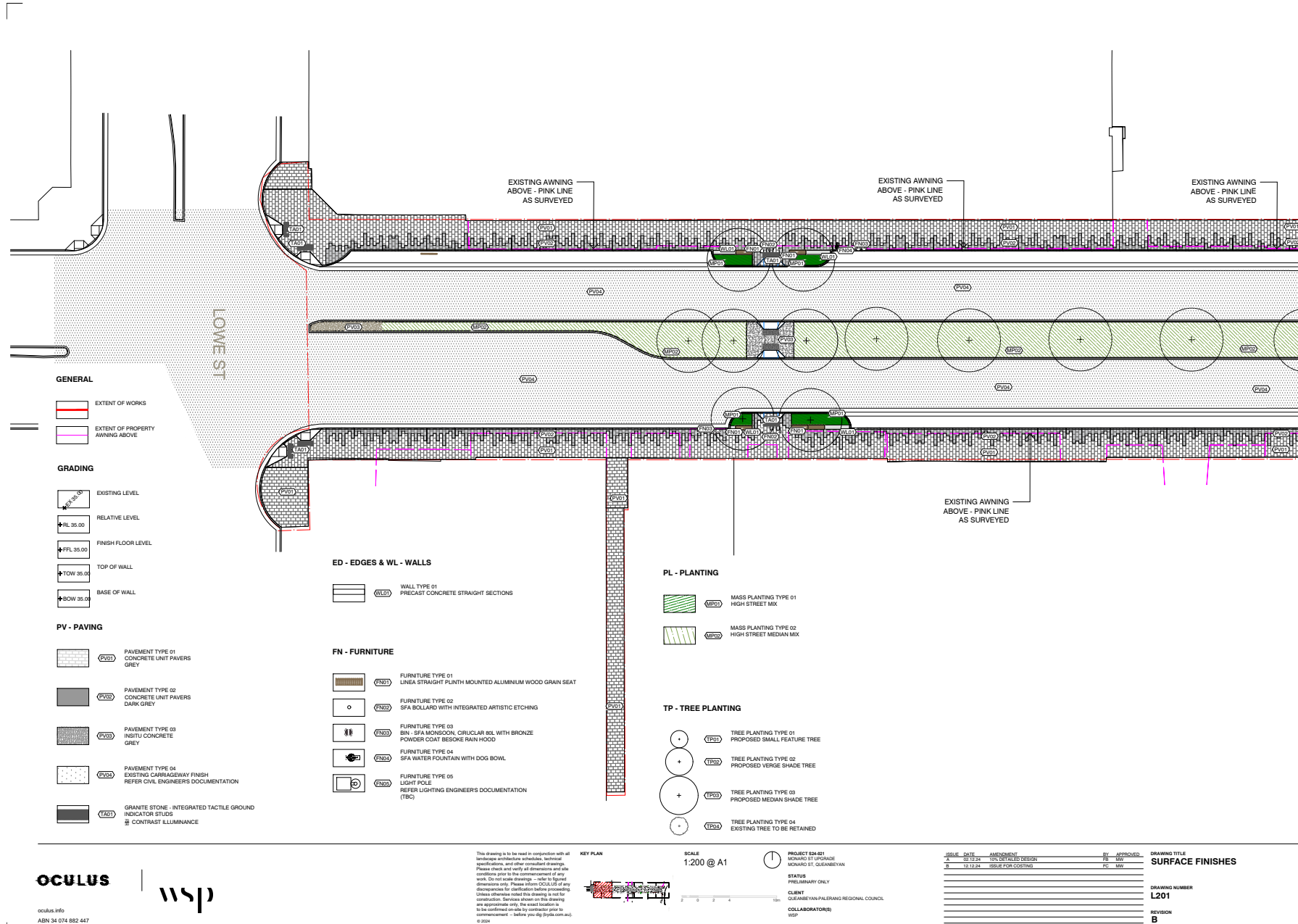
SCALE
1:750 @ A1

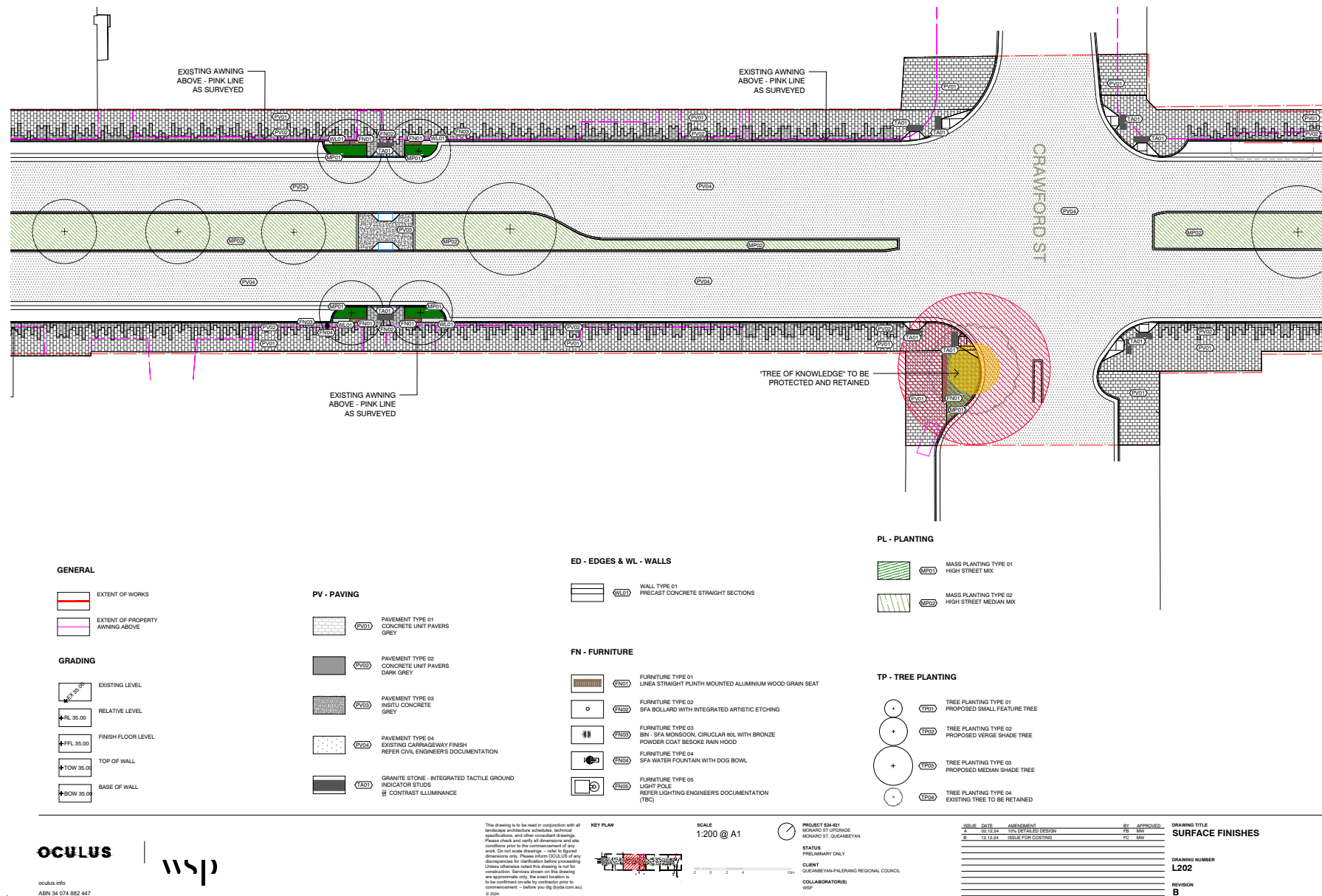


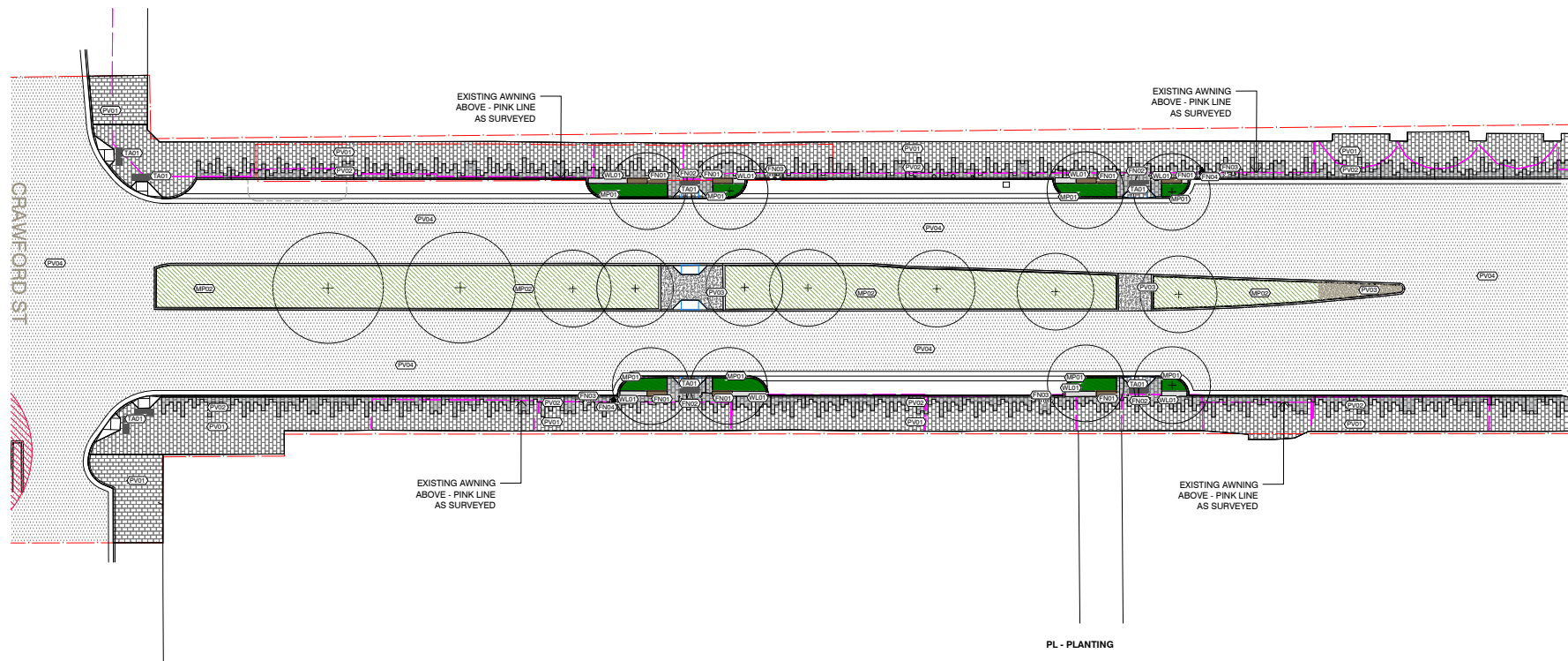
PROJECT SM-001
MONARO ST UPGRADE
MONARO ST, GUNAWAYAN
STATUS
PRELIMINARY ONLY
CLIENT
GUNAWAYAN/PALEANG REGIONAL COUNCIL
COLLABORATOR(S)
WSP

| ISSUE | DATE | AMENDMENT | BY | APPROVED |
|-------|----------|---------------------|----|----------|
| ADV | 02.10.24 | 10% DETAILED DESIGN | FB | MB |
| B | 12.10.24 | ISSUE FOR COSTING | FC | MB |
| | | | | |
| | | | | |
| | | | | |
| | | | | |
| | | | | |
| | | | | |

DRAWING TITLE #
SITE PLAN
DRAWING NUMBER
L200
REVISION
B







GENERAL

- EXTENT OF WORKS
- EXTENT OF PROPERTY
- AWNING ABOVE

GRADING

- EXISTING LEVEL
- RELATIVE LEVEL
- FINISH FLOOR LEVEL
- TOP OF WALL
- BASE OF WALL

PV - PAVING

- PAVEMENT TYPE 01
CONCRETE UNIT PAVERS
GREY
- PAVEMENT TYPE 02
CONCRETE UNIT PAVERS
DARK GREY
- PAVEMENT TYPE 03
INSITU CONCRETE
GREY
- PAVEMENT TYPE 04
EXISTING CARPARKWAY FINISH
REFER CIVIL ENGINEER'S DOCUMENTATION
- GRANITE STONE - INTEGRATED TACTILE GROUND
INDICATOR STUDS
CONTRAST ILLUMINANCE

ED - EDGES & WL - WALLS

- WALL TYPE 01
PRECAST CONCRETE STRAIGHT SECTIONS

FN - FURNITURE

- FURNITURE TYPE 01
LINEA STRAIGHT PLINTH MOUNTED ALUMINIUM WOOD GRAIN SEAT
- FURNITURE TYPE 02
SFA BOLLARD WITH INTEGRATED ARTISTIC ETCHING
- FURNITURE TYPE 03
BN - SFA MONSOON, CIRCULAR BOL WITH BRONZE
POWDER COAT BESIDE RAIN HOOD
- FURNITURE TYPE 04
SFA WATER FOUNTAIN WITH DOG BOWL
- FURNITURE TYPE 05
LIGHT POLE
REFER LIGHTING ENGINEERS DOCUMENTATION
(TBC)

PL - PLANTING

- MASS PLANTING TYPE 01
HIGH STREET MIX
- MASS PLANTING TYPE 02
HIGH STREET MEDIAN MIX

TP - TREE PLANTING

- TREE PLANTING TYPE 01
PROPOSED SMALL FEATURE TREE
- TREE PLANTING TYPE 02
PROPOSED VERGE SHADE TREE
- TREE PLANTING TYPE 03
PROPOSED MEDIAN SHADE TREE
- TREE PLANTING TYPE 04
EXISTING TREE TO BE RETAINED

OCULUS

ABN 34 074 882 447

wsp

This drawing is to be read in conjunction with all landscape architecture schedules, technical specifications, and other consultant drawings. Please check and verify all dimensions and site conditions prior to the commencement of any work. Do not make drawings - refer to signed dimensions only. Please inform OCULUS of any discrepancies for confirmation before proceeding. Unless otherwise noted this drawing is not for construction. Services shown on this drawing are approximate only, the exact location is to be confirmed on-site by contractor prior to commencement - before you dig (byla.com.au) © 2024

KEY PLAN



SCALE
1:200 @ A1

0 2 4 10m



PROJECT SH-001
MONARO ST UPGRADE
MONARO ST, GUNAWATYAN
STATUS
PRELIMINARY ONLY
CLIENT
GUNAWATYAN/PALENGRAB REGIONAL COUNCIL
COLLABORATOR(S)
WSP

| ISSUE | DATE | AMENDMENT | BY | APPROVED |
|-------|----------|---------------------|----|----------|
| A | 02.12.24 | 10% DETAILED DESIGN | FB | WB |
| B | 12.10.24 | ISSUE FOR COSTINGS | FC | WB |
| | | | | |
| | | | | |
| | | | | |
| | | | | |
| | | | | |
| | | | | |
| | | | | |
| | | | | |

DRAWING TITLE & SURFACE FINISHES

DRAWING NUMBER
L203
REVISION
B

