



FOR LEASE

BY EXPRESSION OF INTEREST

RB Smith Building, 262 Crawford Street, Queanbeyan

Large shopfront, office space or activity space close to Queanbeyan civic and cultural precinct, parking and public transport.

FEATURES

This large single storey building has had several uses over the years including retail, community space and QPRC administration offices. A large open space toward the rear was used as a meeting and training room but could just as easily be used as a large storage area, with off-street vehicle access. The front portion of the building provides a large welcoming foyer or open plan office space.

- Flexible spaces
- Large open plan area
- Varying sized office spaces
- Some off-street parking
- Fully carpeted and vinyl floors
- Fully air conditioned
- Close to public parking
- Well provisioned kitchenette
- Bus stop across the street



Large flexible open plan office space



Large open plan areas and offices



Multiple staff amenities

INSPECTION BY APPOINTMENT

Monday to Friday 9am-5pm

Phone: 0427 940 565

Email: michael.goiser@qprc.nsw.gov.au

More information at: www.qprc.nsw.gov.au/for-lease

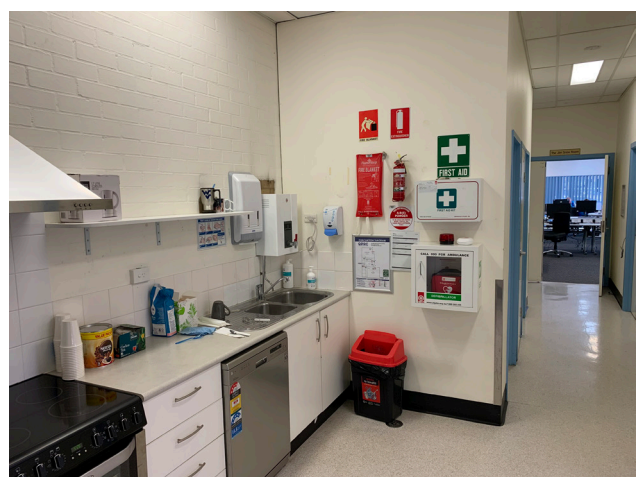
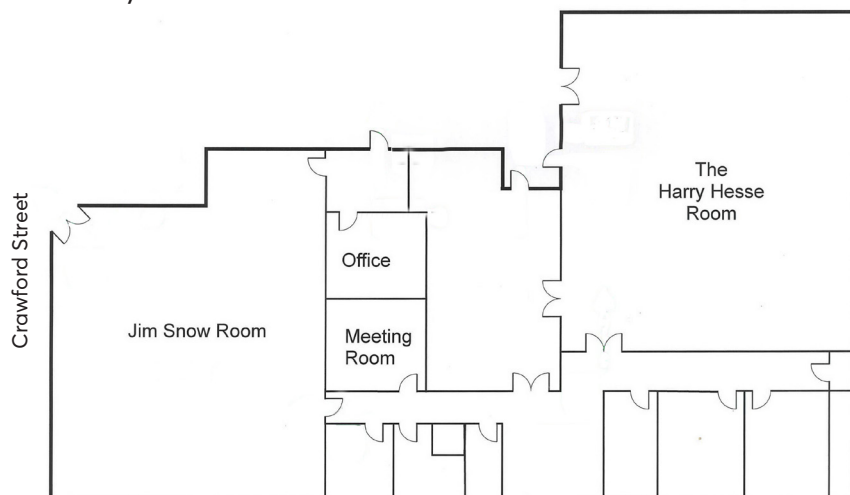


FLOORPLAN

With a total of approximately 423sqm, the floorplan provides flexibility with two large open plan spaces - one at the front and one at the rear.

The floorplan also provides fixed office spaces and amenities in between the large open areas.

Set back from Crawford Street, the main access is via an off-street courtyard. There is also side access via a short driveway.



SUBMITTING AN EOI

Please complete the Expression of Interest form available on our website at: www.qprc.nsw.gov.au/for-lease

Our intent is to lease this space at commercial market value for a period of up to five years.

Expressions of interest of greater than \$2,000 per week will be considered.

Please lodge expressions online by Friday 22 November 2024.