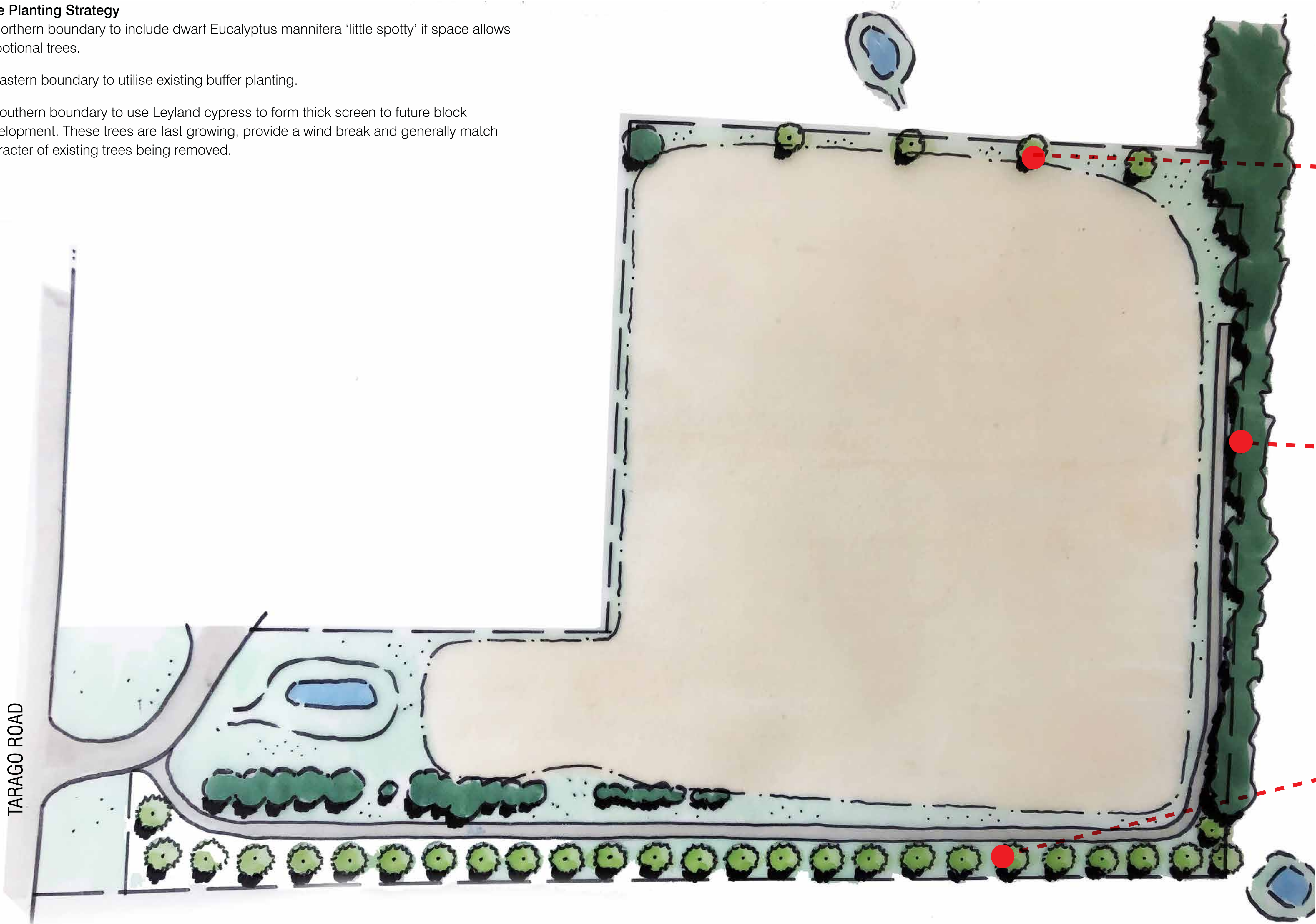


BUNGENDORE LANDFILL

TREE PLANTING CONCEPT PROPOSAL

Tree Planting Strategy

- 1. Northern boundary to include dwarf Eucalyptus mannifera 'little spotty' if space allows as potional trees.
- 2. Eastern boundary to utilise existing buffer planting.
- 3. Southern boundary to use Leyland cypress to form thick screen to future block development. These trees are fast growing, provide a wind break and generally match character of existing trees being removed.



PROPOSED TREES



Optional
Eucalyptus mannifera 'little spotty' Quantity: 4 @ 25 ltr pot size



Evergreen
Cypressus leylandii (Leyland cypress). Quantity: 27 @ 45ltr pot size