

Queanbeyan Sewage Treatment Plant upgrade

January 2024

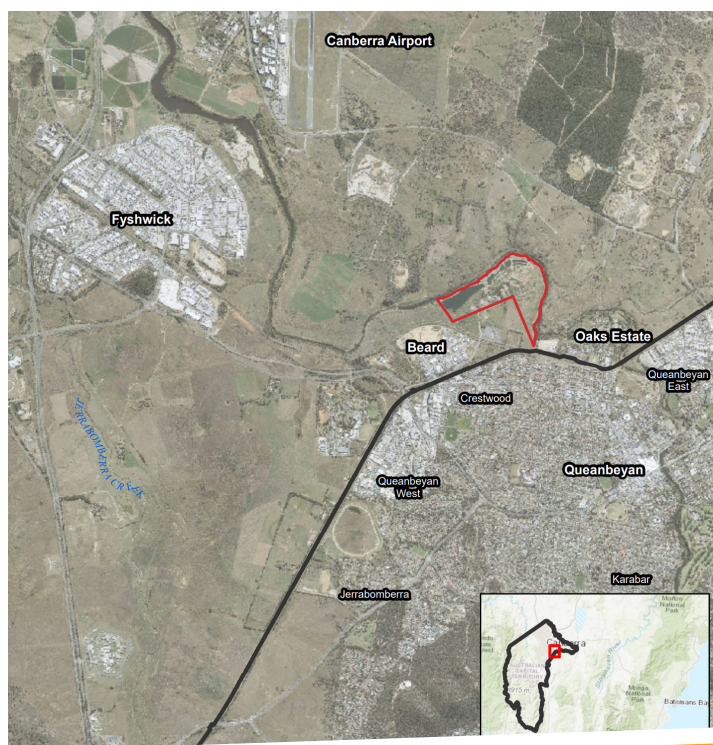
DELIVERING A ROBUST, RELIABLE AND SUSTAINABLE SEWAGE TREATMENT PLANT THAT PROTECTS PUBLIC HEALTH AND THE ENVIRONMENT FOR FUTURE GENERATIONS

Background

The Queanbeyan Sewage Treatment Plant (QSTP) has been treating Queanbeyan's sewage since the mid-1930s. Council is undertaking a significant upgrade project to replace the existing treatment plant with a modern facility on the same site.

Location

The Queanbeyan sewage treatment plant is located just across the border in the ACT on Mountain Road. As the new treatment plant is planned for the same location we need to comply with ACT laws for design, construction and operation of the new plant.



Water quality impacts on Lake Burley Griffin

As part of the environmental Impact Statement for the project we prepared a Receiving Water Quality Impact Assessment that included hydrodynamic modelling of water quality in Lake Burley Griffin.

To keep the impact on water quality in Lake Burley Griffin low, the new STP incorporates design features to remove, in particular, phosphorus and nitrogen which can contribute to blue-green algal growth in the lake. Additionally, the design incorporates a large storm pond that will allow us to store high flows during wet weather events and pass these through the treatment process when the inflow subsides.

The storm pond will significantly reduce the occurrence of overflows of untreated sewage directly in the Molonglo River and Lake Burley Griffin.



Learn more at www.qprc.nsw.gov.au/QSTP

Features of the primary treatment

The primary treatment removes large particles from the sewage. This includes things like food scraps, wet wipes, cotton buds, plastic and grit (eg sand).

To achieve this, when the sewage arrives at the site it first passes through band screens that remove particles larger than 5mm called 'screenings'. The sewage is then pumped to a grit removal system that separates the grit from the sewage using a vortex.

The collected screenings and grit are washed and collected in bins for disposal at a licensed landfill facility.

Wildlife

Extensive wildlife habitats are linked to the STP by the Molonglo River Corridor. The new plant will remove the existing maturation ponds and rehabilitate the riparian zone.

As the plant is located in close proximity to Canberra Airport, we need to be considerate of wildlife that may be attracted to the area that is hazardous to the operation of the airport.

The landscape design for the maturation pond rehabilitation has been prepared to discourage hazardous wildlife whilst providing habitat for less hazardous species.

Aboriginal Heritage

The Queanbeyan area (particularly the Molonglo and Queanbeyan Rivers) has been recognised as a significant Aboriginal pathway through the land.

Anecdotally, it has been suggested that a cottage of Jimmy Clements (King Billy) was located on the site, however, no information on its history, location or physical composition were recorded with the heritage nomination.

Most of the study area has low Aboriginal archaeological potential except the south-western corner and area south of the upgrade which have been largely undeveloped and less disturbed.

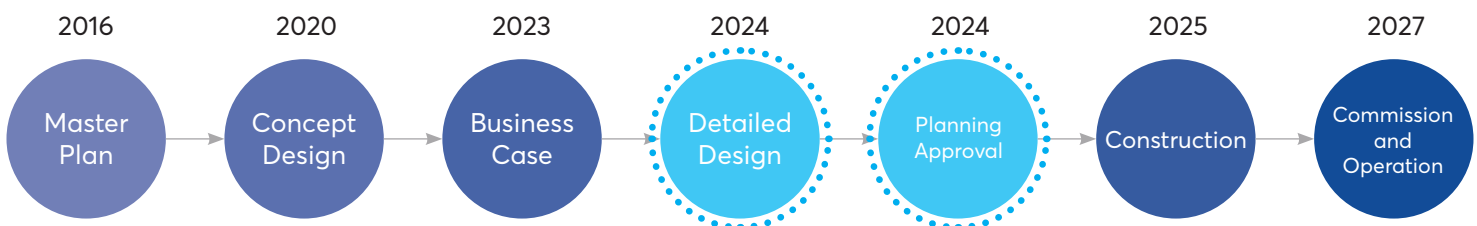
These areas have potential for archaeological deposits and will either be marked as exclusion zones during construction or subject to further investigation if ground disturbing works are required.

Who is King Billy?

Jimmy Clements, or 'King Billy' was a Wiradjuri man and a local resident of Queanbeyan in the late 19th century.

He was particularly known for presenting the first recorded Aboriginal protest at Old Parliament House during its opening on 9 May 1917.

Anticipated works timeline



View the Development Application and completed EIS on the [ACT Planning](#) page.

IN PROGRESS

We have **lodged a Development Application** with the ACT Government and are waiting on a decision. The **detailed design is currently being reviewed** and finalised. We are hopeful these will be completed mid-2024.

In parallel we are preparing a second Development Application for electricity supply adjustments and roadworks on Mountain Road.