

COMMUNITY DEVELOPMENT PLAN

NERRIGA

NSW 2622



GATEWAY TO THE NSW SOUTH COAST
AND SOUTHERN TABLELANDS

ACKNOWLEDGEMENT OF COUNTRY



We acknowledge the Yuin Nation as the traditional custodians of the Nerriga Region. We recognise that we are on Walbanga Country. The Yuin people have a deep connection to the land and waterways, with their culture, traditions, and stories strongly tied to these environments.

We pay our respects to their Elders past, present, and emerging. We acknowledge the stories, traditions, and living cultures of our First Nations peoples on this land and commit to building a brighter future together.



CONTENTS

1. Introduction

- 1.1 Purpose of the Master Plan
- 1.2 Scope and Objectives
- 1.3 Nerriga's Vision

2. Development Goals and Project Rationale

- 2.1 Key Development Goals
- 2.2 Project Rationale - the Importance of Investment in Nerriga

3. Building resilience: Neighbourhood Safer Places

- 3.1 Priority works for Neighbourhood Safer Places
- 3.2 Planning, Partnerships and Implementation

4. Key Priorities for Nerriga

5. Place based works

- 5.1 Nerriga Community Hall
- 5.2 Good Shepherd Church of England
- 5.3 St Mary's Help of Christians War Memorial Catholic Church
- 5.4 Sportsground and Nerriga Park
- 5.5 Nerriga Old School House Museum
- 5.6 Showground
- 5.7 Community Memorial
- 5.8 War Memorial
- 5.9 Catholic Cemetery

6. Location specific works

- 6.1 Footpaths
- 6.2 Water
- 6.3 Electricity / Power
- 6.4 Signage
- 6.5 Seating and other infrastructure
- 6.6 Aerodrome – Secondary Helicopter Landing Site

7. Transport

8. Funding

9. Partnerships and Governance

10. Analysis matrix for prioritisation of works

ADDENDUM ONE: NERRIGA FIRST NATIONS COMMUNITY ENGAGEMENT GUIDELINES

ADDENDUM TWO: PRELIMINARY COSTINGS

ADDENDUM THREE: CORRESPONDENCE AND LETTERS OF SUPPORT

ADDENDUM FOUR: COMMUNITY RESILIENCE COMMITTEE ENDORSEMENT

INTRODUCTION

Nerriga is a small village in the **Southern Tablelands** of **New South Wales**, in the **Queanbeyan-Palerang Regional Council** Local Government Area.

Situated at the edge of Morton National Park on a road which links

Canberra, Goulburn, Braidwood, Nowra, the village is located along a key transport route which provides a gateway to the South Coast and Southern Tablelands, and access to both HMAS Albatross, Nowra and HMAS Cresswell at Jervis Bay.

Nerriga is strategically located between Nowra, Goulburn, Braidwood and Canberra with access to Jervis Bay via the Historic Wool Road formed in the 1840's. It provides a northern gateway to locations in the Queanbeyan-Palerang Regional Council and a link to the A1 from the South Coast.

The number of ratepayers in Nerriga and the surrounding localities is 158, however, there are recent subdivisions at Ningee Nimbell Creek Road, Endrick River Road and several on Nerriga Road. These, along with vital road upgrades have led to an upsurge in development opportunity and a future of growth. Nerriga has a strong and vibrant community, with organisations such as the Nerriga Progress and Sporting Association (est. 1927) Rural Fire Service (RFS), and a range of other community organisations that regularly meet and utilise the Community Hall, its Churches, the Nerriga Pub, Museum and Memorial.

In December 2019, the Black Summer Fires destroyed properties around Nerriga, and the Nerriga Hotel provided shelter for residents evacuated from their homes after thick smoke forced them to move from the Community Hall. Local residents continued to band together for survival for several hours until backup resources arrived to assist the village volunteers.

Due to the loss of more than 24 homes and structures, the broader community have become increasingly aware of the need for upgraded infrastructure, and safer buildings to provide refuge and protection from future fires and extreme weather events.

Alternative supplies of power and water are vital to ensure the comfort and safety of people seeking shelter, along with refurbishments to improve ventilation, lighting, emergency signage and to provide upgraded windows, doors and other built elements.

The community's vision is to increase tourism and trade to make Nerriga a priority destination for travellers seeking to discover more about the history of the region. This Community Development Plan identifies priority investment areas in and around Nerriga, in the pursuit of truly great local place making.

This Community Development Plan forms the basis of the Nerriga Grant Application under the Federal Government's Regional Precincts and Partnership Program.

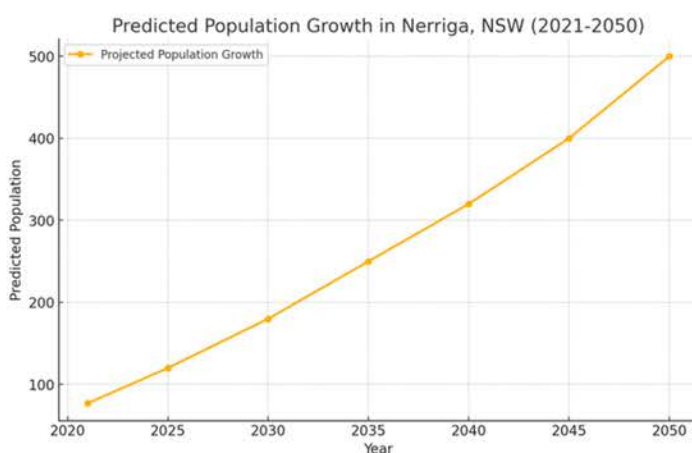


Figure X: Predicted Population Growth in Nerriga, NSW (2021-2050)

This graph illustrates the projected population growth in Nerriga, NSW, based on planned infrastructure developments, increased housing opportunities, and community investments outlined in the Community Development Plan. The population is expected to grow from 77 residents in 2021 to approximately 500 by 2050, reflecting the positive impact of improved amenities, tourism, and economic opportunities. These projections support the rationale for targeted investment in essential services, transport infrastructure, and resilience-building measures.

It is important to note that Nerriga Village is seen as a social centre by people residing in Mongarlowe, Oallen, Tomboye and Sassafras.



Nerriga Memorial: NPSA.



Nerriga Fires: NPSA.

1.1 PURPOSE FOR THE MASTER PLAN

The purpose of this Plan is to develop a place-based approach for the expansion and growth of the Nerriga region. The Plan seeks to focus on Nerriga as a 'place with a purpose', building upon collaboration with community groups to reflect local priorities and shared needs to increase productivity, equity and resilience for the local community.

This plan has been developed collaboratively with the various community organisations that make up the Nerriga community. It seeks to enhance the use and enjoyment of existing landmarks and places through refurbishment and upgrades to existing buildings and infrastructure, whilst also seeking to better integrate certain land for the purpose of greater place making throughout the Nerriga community.

It is recognised that such an approach will provide enhanced economic and social opportunities, increasing the use of local business and encouraging exploration of the locality. The proposed works also seek to improve access and mobility, allowing a greater number of visitors to enjoy local landmarks and icons, whilst providing superior outcomes using the principles of crime prevention through environmental design.

This Plan places great importance on the development of places of refuge and community assemblage, to deal with the increase in frequency and intensity of extreme weather events due to changing climates, and in response to recent bushfire events. It also seeks to increase the self-reliance of the community in times of emergency, with access to bore water and solar power paramount for self-sufficiency and climate resilience.

The Community spirit of Nerriga has been evident for many decades, as proven by the fact that the Churches, the Community Hall and other structures were all funded and built by members of the Community.

This plan aims to outline the vision, development goals, and key initiatives required to enhance local infrastructure, and create a more resilient community.

1.2 SCOPE AND OBJECTIVES

This master plan will focus on the following objectives:

LOCAL PLACEMAKING

Infrastructure improvements for footpaths, utilities, signage, seating, water, communications and power.



ECONOMIC DEVELOPMENT

Increasing opportunities for tourism, promoting the visibility of local business and providing venues to diversify local enterprises.

IMPROVING COMMUNITY RESILIENCE

External upgrades to Community buildings to create Neighbourhood Safer Places'. Ensuring buildings are equipped with emergency power and water supply.



RESTORING AND IMPROVING COMMUNITY BUILDINGS

Upgrade community buildings for the comfort and accessibility of users providing toilets, ramps, security and upgraded electricals.

1.3 NERRIGA'S VISION

**TO INCREASE THE VIBRANCY,
SUSTAINABILITY AND RESILIENCE
OF THE COMMUNITY**

**TO ATTRACT INVESTMENT AND
STRENGTHEN CONNECTIONS AND
PARTNERSHIPS**

**TO ENHANCE THE SAFETY AND
QUALITY OF LIFE OF ALL
RESIDENTS**

**TO CELEBRATE NERRIGA AS THE
GATEWAY TO THE SOUTH COAST
AND SOUTHERN TABLELANDS**

2. DEVELOPMENT GOALS AND PROJECT RATIONALE

2.1 KEY DEVELOPMENT GOALS

- **Economic Growth:** Foster a diverse and resilient economy, with a focus on tourism and local businesses. Provide additional venues and opportunities for events.
- **Infrastructure Improvement:** Develop a modern infrastructure network, including upgraded utilities, digital connectivity, footpaths, signage and seating to accommodate pedestrians.
- **Building Improvement:** Improve the condition and functionality of existing community buildings to comply with current building codes, and to ensure accessible and comfortable use by all community members.
- **Neighbourhood Safer Places:** Upgrade buildings to provide safety during extreme climate events such as bushfire.
- **Demonstrate Sound Investment and Value for Money:** Ensure that project works align with strategic objectives, are based upon local needs and have multiple beneficial outcomes, representing exceptional value for investment.

2.2 PROJECT RATIONALE - THE IMPORTANCE OF INVESTMENT IN NERRIGA

Situated at a key junction along MR92, Nerriga is more than just a waypoint—it plays a crucial role in regional connectivity and resilience. The town provides essential support services for travelers, and key connections between Canberra, Nowra, Jervis Bay and the Far South Coast as follows:

- **Defense Infrastructure and Connectivity** – Nerriga lies on the inland route linking Canberra’s Australian Defence Force Academy (ADFA) with two major Navy installations at Jervis Bay: HMAS Cresswell and HMAS Albatross.
 - HMAS Creswell, located within Jervis Bay, houses the Royal Australian Naval College, where naval officers receive their foundational training before deployment.
 - HMAS Albatross, situated just south of Nowra, is the Royal Australian Navy’s Fleet Air Arm base and Australia’s largest operational Naval Air Station. It supports helicopter training for all defence services, the Naval Air Wing, parachute training and other specialised areas.
- **Bushfire and Disaster Resilience** – During extreme weather events and bushfires, MR92 provides an alternative evacuation and supply route, especially when coastal roads are compromised.
- **Economic and Tourism Development** – The improved MR92 supports local tourism, agribusiness, and regional investment, enhancing accessibility to natural attractions like Morton National Park and Jervis Bay Marine Park.

The plan the Nerriga Community has developed puts forward a series of important works that benefit the people of Nerriga and surrounding communities. These investments will also improve travel reliability, reduce transport times, and boost economic integration between the Southern Tablelands and the South Coast.

The benefits of investment in Nerriga are multifaceted and extend far beyond local, geographic and administrative boundaries.

- Investing in Nerriga’s infrastructure—such as rest areas, providing EV charging stations, and support services will strengthen the defence supply chain and improve resilience in times of crisis.
- Investing in road upgrades, emergency communication systems, and local support facilities will ensure safe and efficient evacuation and supply routes for inland and coastal communities.
- Investment in visitor amenities, accommodation, and local enterprises will help position Nerriga as a regional hub for eco-tourism, outdoor recreation, and cultural heritage experiences.

3. BUILDING RESILIENCE

NEIGHBOURHOOD SAFER PLACES

A Neighbourhood Safer Place ('NSP') is a place of last resort for refuge during bushfire emergency. It is to be used when all other options for individual survival plans are unable to be put into action safely.

A NSP is a building or a space that has been designated as such by the Commissioner of the Rural Fire Service. It provides for improved protection of human life during the onset and passage of a bushfire. It is a location where people facing immediate threat to their safety or property can gather and seek shelter from the impact of a bushfire.

The Nerriga community found itself in a place of last resort during the Black Summer Bushfires. Homes were destroyed by the Currowan and Tianjara fires, and when locals sought shelter, it was discovered that the Nerriga Community Hall was not sufficiently equipped to withstand smoke. The number of people seeking refuge also exceeded carrying capacity, forcing locals to evacuate a second time to Nerriga Hotel.

As the population grows, and changes in climate increase the frequency and intensity of extreme weather events, it is vital to upgrade Nerriga's community buildings to provide NSPs, and to ensure the comfort and wellbeing of all who seek refuge. In the past, Nerriga has become isolated very quickly from other communities and vital resources during times of extreme weather events, and residents were unable to safely evacuate by road.

NSW Rural Fire Service has established performance criteria for the assessment of NSP's. In addition to meeting the baseline criteria, an assessment is planned to identify the extent of works that are required to achieve a Building Attack Level (BAL) rating of BAL -12.5.

Upgrade works are proposed for the Community Hall, the Anglican Church of the Good Shepherd and St Mary's Help of Christians War Memorial Catholic Church to provide three Neighbourhood Safer Places that are equipped for comfort and sufficient to provide shelter for maximum carrying capacity.

	Performance Criteria	Acceptable Solution
Radiant Heat	Building is located and constructed to enhance the chance for survival for humans in attendance from the radiant heat of a bush fire	Building is situated to prevent direct flame contact, material ignition and radiant heat levels of 10kW/m ² ; or Provide 139 metres separation distance from a bush fire hazard
	Open Space is located to enhance the chance for survival for humans in attendance from the radiant heat of a bush fire	Open Space is situated and maintained to prevent direct flame contact, material ignition and radiant heat levels of 2kW/m ² ; or Provide 310 metres separation distance from a bush fire hazard
Maintenance of the Site and the Land Adjacent	Area between bush fire hazard and the site is maintained to a level that ensures the radiant heat levels at the Building/Open Space meet the Performance Criteria for Radiant Heat.	The site and land adjacent to the site between the Building/Open Space and the bush fire hazard is managed land or maintained in accordance with NSW RFS document <i>Standards for Asset Protection Zones</i>

Figure Two: Assessment Criteria for Neighbourhood Safer Places

3.1 PRIORITY WORKS FOR NEIGHBOURHOOD SAFER PLACES

Three separate buildings are identified for upgrade works to become NSPs:

- Nerriga Community Hall
- Anglican Church of the Good Shepherd
- St Mary's Help of Christians War Memorial Catholic Church

Nerriga Community Hall is the primary designated NSP, however, it is now widely understood that in a crisis such as that faced in December, 2019 it may not be possible to predict the extent of fire threats, and some or all members of the community may become vulnerable.

It is therefore vital for the Nerriga Community to have several buildings available as places of refuge, should there be a need to accommodate a greater number of persons than can adequately be accommodated in the Community Hall alone.



3.2 PLANNING, PARTNERSHIPS AND IMPLEMENTATION

Much of the work proposed in the following section is intended to upgrade buildings to create NSPs, along with improving amenity and functionality. In addition to these works, the NSW RFS will conduct ongoing formal and informal inspections of Nerriga NSP sites for inclusion in a Bush Fire Risk Management Plan (BFRMP). This is in addition to a current program of support to install a large (160kL) water tank at St Mary's Help of Christians War Memorial Catholic Church.

A BFRMP is a strategic document and sets out a five-year program of coordinated multi-agency treatments to reduce the risk of bush fire to the assets. Treatments may include such things as hazard reduction, community education, property planning, ignition management and preparedness strategies.

These assessments are intended to provide a definitive answer as to whether the NSP meets these guidelines. Any additional works that are required as part of this assessment will be included in the list of works currently proposed as part of Place Based Priority Works in Chapter Five of this Plan. It is recognised that certain of the works included later in this report will be dependent upon the outcome of these assessments.

At the completion of an inspection, the results of the inspection shall be provided to the relevant Bush Fire Management Committee (BFMC) as an evaluation of an asset within their BFRMP. The BFMC shall consider any issues or actions identified in these inspections for implementation through their BFRMP.

4. KEY PRIORITIES FOR NERRIGA

In order to achieve the objectives of this Plan, key priorities for Nerriga have been divided into three categories: place-based works, locality works and transport works.

Place-based works will be undertaken to repair, upgrade and improve the comfort and amenity of specific buildings and landmarks in Nerriga.

These works will include:

- Upgrading the Nerriga Community Hall
- Upgrading the Anglican Church of the Good Shepherd
- Upgrading St Mary's Help of Christians War Memorial Catholic Church
- Upgrading parks and reinvigorating the Showground
- Upgrading the Community Memorial
- Installing a War Memorial
- Upgrading the Nerriga Museum and Craft Centre

Locality-based works will be undertaken to connect individual places together and develop resilience at a local landscape scale.

These works will include:

- Footpaths, connecting buildings and cemeteries for pedestrians
- Signage to identify places of interest and provide important historical information to tourists and visitors
- Seating to improve the comfort and amenity of visitors and locals
- Bore water infrastructure including storage tanks and piping to ensure supply to park amenities, the community hall and churches
- Plantings for shade, appearance and the amenity of visitors

Transport works will be undertaken to reflect priorities for safety, efficiency and sustainability.

These works will include:

- Installing two EV charging stations to accommodate the increased use of electric cars;
- Developing a camping area for the expected increase in tourist traffic;
- Developing a RV dump point;
- Developing a system of footpaths to encourage activity connectivity within the area;
- Increasing parking facilities within the area; and
- Establishing a helicopter landing site for medical helicopter in times of emergencies on the Nerriga Road and Oallen Road

5. PLACE-BASED PRIORITY WORKS

Place-based works will be undertaken to repair, upgrade and improve the comfort and amenity of specific buildings and landmarks in Nerriga.

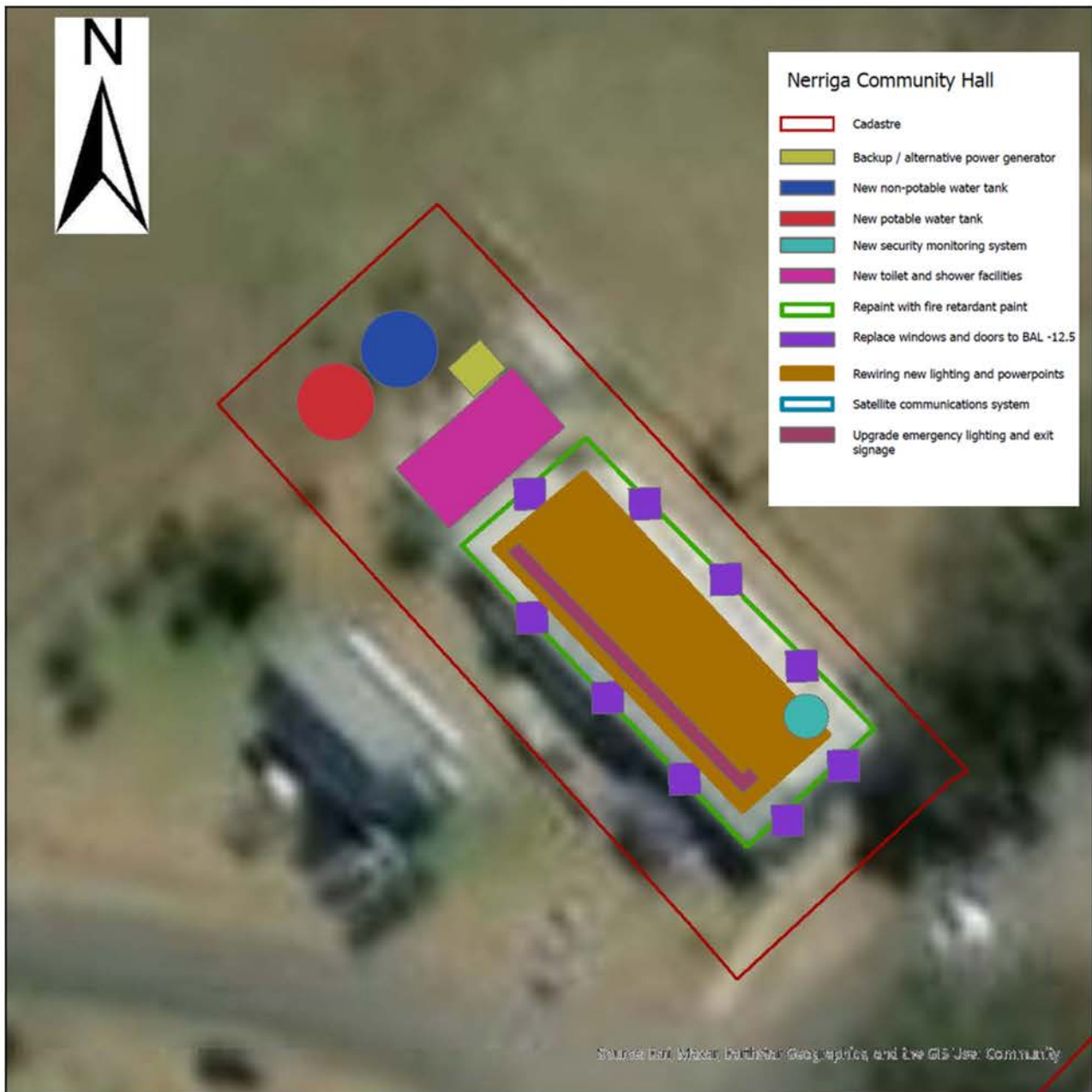
Each of the places included in this section of the Plan has been considered by the community at committee meetings and community consultation.

5.1 NERRIGA COMMUNITY HALL

Nerriga Community Hall is widely used and recognised by the local community as a principal gathering place. It serves as a hub for events, celebrations, and social gatherings, and has been a cornerstone of Nerriga life for generations, hosting everything from first aid courses, karaoke nights, dances and fundraisers to weddings, funerals, local meetings and cultural events.

The following works are proposed:

- Repaint exterior with fire resistant paint.
- Replace windows and doors to achieve BAL -12.5 rating.
- Installation of satellite communications system.
- Provision of additional freezers, refrigeration systems and commercial kitchen.
- Upgraded water supply including bore water.
- Alternative power generator.
- Rewiring of hall, new lighting and power points.
- New toilet and shower facilities including an accessible unit.
- Installation of security monitoring system, alarm and CCTV.
- Upgrade emergency lighting and exit signage to current standards.
- Replace potable water tank, provide non potable tank to comply with fire fighting systems requirements.



MAP OF WORKS

5.2 ANGLICAN CHURCH OF THE GOOD SHEPHERD

The Anglican Church of the Good Shepherd, Nerriga was built about 1934. It is located beside the Nerriga Community Hall on a separate title, and is actively used and valued by the community. Upgrade works are required to improve access for patrons with lesser mobility, along with upgraded wiring and repair works. In order to be one of the three NSP, works are also required to achieve BAL -12.5, along with works to enclose the subfloor, install fire resistant shutters and seal gaps to prevent smoke penetration in times of emergency.

The following works are proposed:

- Undertake building inspection AS3959 - bushfire.
- Upgrade / install new doors to BAL -12.5.
- Provide access ramp to entry.
- Undertake fire assessment.
- Install fire resistant shutters to windows.
- Repair ceiling.
- Seal roof ridge capping and all gaps between eaves and roof.
- Repaint exterior with fire resistant paint.
- Upgrade electrical wiring and install solar for backup power.
- Install fire suppression sprinklers on roof.
- Enclose subfloor with fire retardant material / brick in.
- Fit out with seat cushions that can be used as bedding in emergencies



MAP OF WORKS

5.3 ST MARY'S HELP OF CHRISTIANS WAR MEMORIAL CATHOLIC CHURCH

St Mary's Church has served as a place of worship, reflection, and community gathering for generations of Nerriga residents. The church was officially opened on 31 March 1957, and is supported by an active community that continues to contribute to its upkeep, fixing gates, doors, installing water tanks and carrying out other works in-kind

The church is one of the few brick buildings in the town with a good separation distance from bush fire hazards. It has been identified by members of RFS as an ideal location for a NSP.

The following works are proposed:

- Undertake building inspection AS3959 - bushfire.
- Paint windows at Church with fire resistant paint to BAL -12.5.
- Paint exterior fittings with fire resistant paint including doors to BAL -12.5.
- Replace roof with Colorbond steel.
- Install fire sprinklers on roof.
- Replace downpipes.
- Upgrade current toilets and include shower.
- Upgrade current boundary fence.
- Upgrade electricity switchboard and rewire.
- Install solar panels and generator.
- Method for moving pews when church is being used as a NSP.



MAP OF WORKS

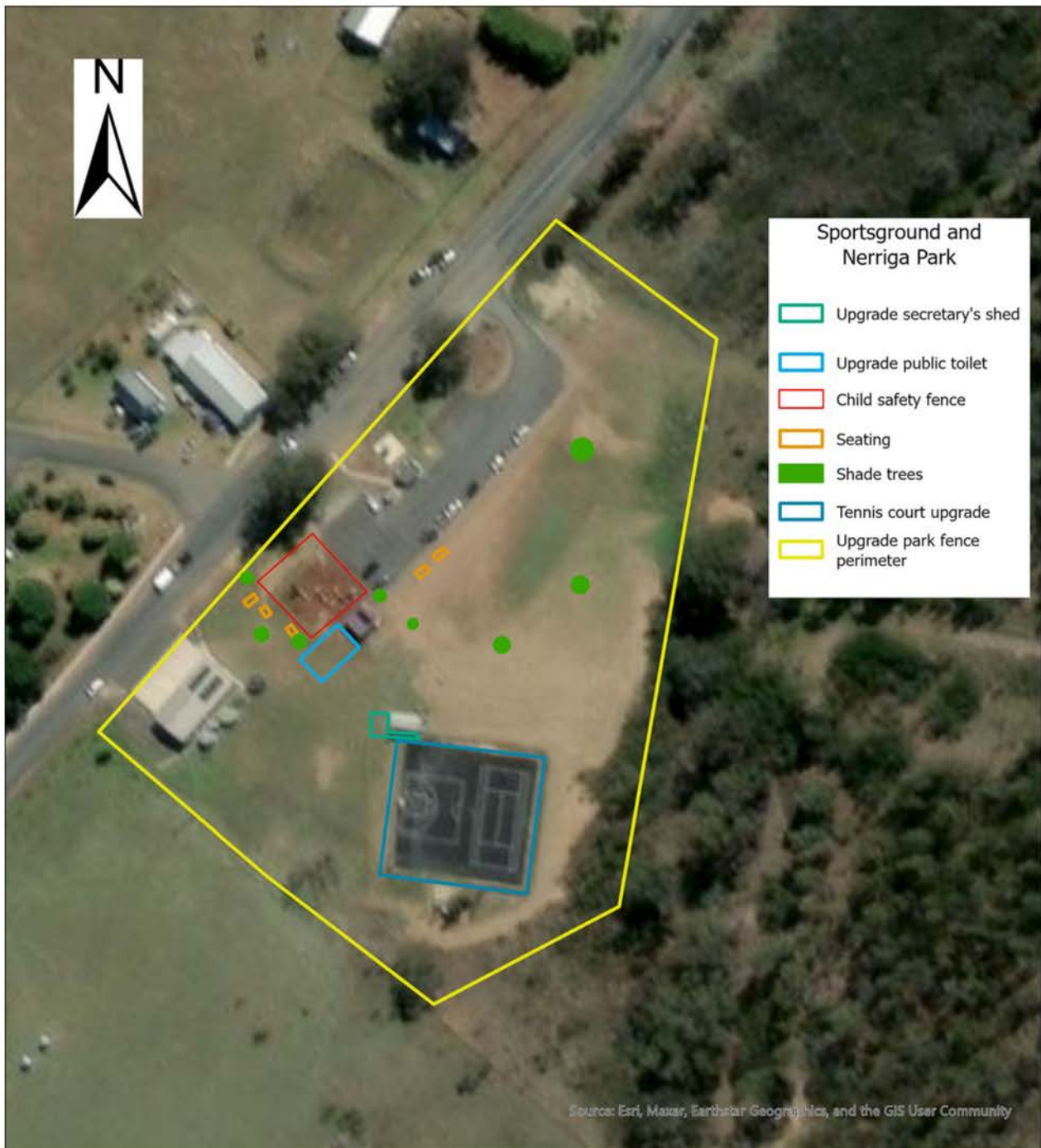
5.4 NERRIGA SPORTSGROUND AND PARK

Nerriga Sportsground and Park has been host to a range of activities and events throughout the years. Locals historically enjoyed cricket matches in Summer, tennis throughout the year, and annual events including the Bushman's Carnival / Gymkhana.

The site has some play equipment, a solar-powered BBQ, parking and a small public toilet for the use of locals, visitors and travellers. Additional amenities, improved safety measures and upgrades to existing facilities are essential to meet the growing needs of the local population, who wish to enjoy such activities in the future, and for the amenity and convenience of visitors across the region.

The following works are proposed:

- Install EV charging station.
- Public Toilet Upgrade - provide additional toilets and repair drainage issues.
- Install CCTV (see later section, 6.5 for more information).
- Install backup solar.
- Upgrade Secretary's shed for food services use.
- Complete tennis court work.
- Child proof fence around playground equipment.
- Improve Park perimeter fencing.
- Provide shade trees and seating in park.
- Install guttering and drainage around toilet blocks.



MAP OF WORKS

5.5 NERRIGA MUSEUM AND CRAFT CENTRE

Nerriga Museum and Craft Centre operates out of the Nerriga Public School building. The Museum originally opened as a school in 1868 until 1917, and again as a State School from 1928 to 1975.

The school was listed as a Reserve for public recreation with Crown Lands NSW in 1984.

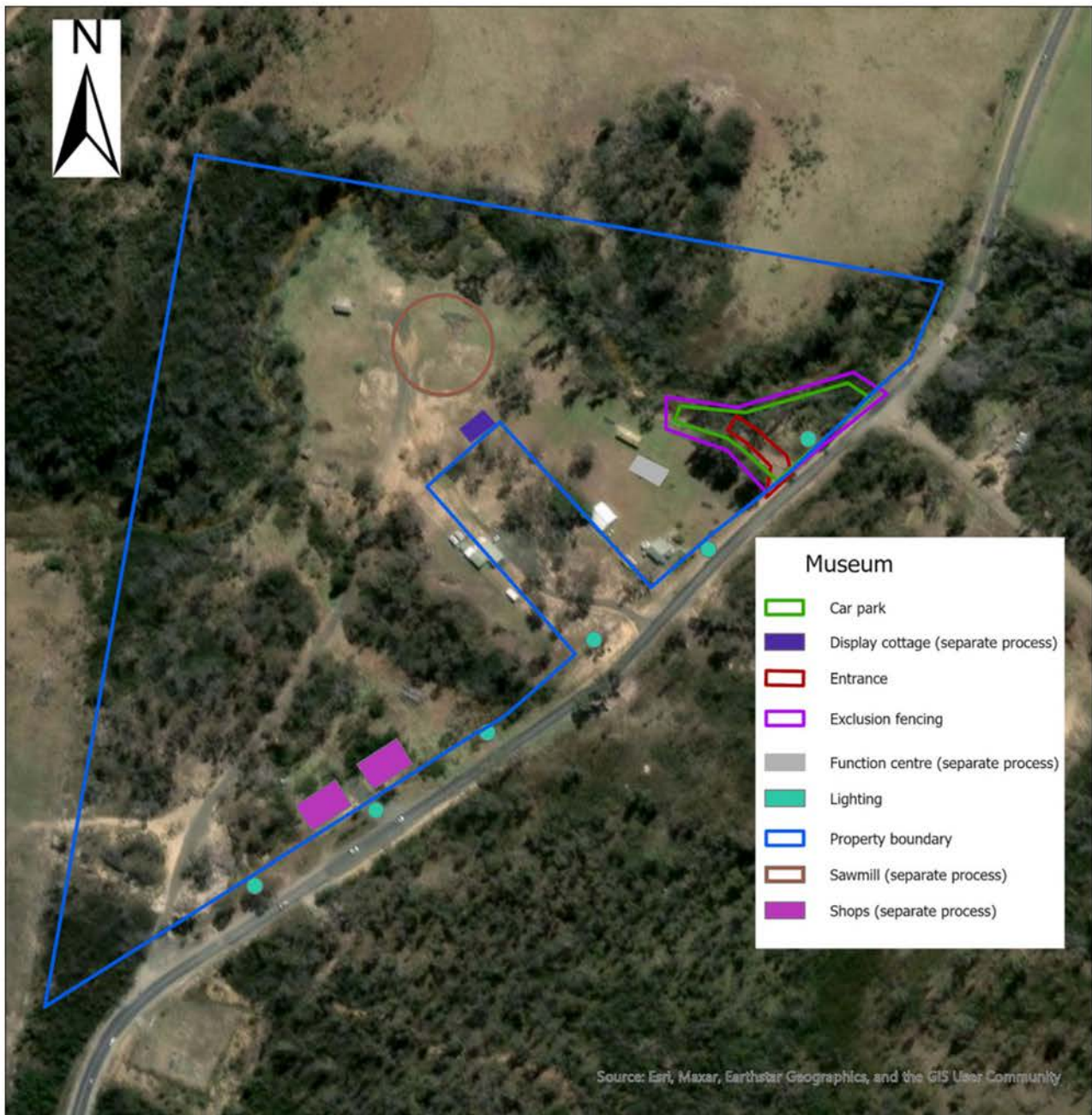
Nerriga Museum and offers visitors a glimpse into the rich history and heritage of this small but significant community in the Queanbeyan Palerang region.

The Museum showcases artifacts, photographs, and displays that chronicle Nerriga's journey from its early days as a vital route for settlers, the wool and timber industries and gold miners to its role in modern rural life.

During the Black Summer Bushfires the Museum lost a number of assets, replacement of which are covered by insurance and therefore separate to this application

The following works are proposed:

- A footpath from the Bindi Brook crossing along the front of the Museum to the new buildings (opp. Catholic Cemetery) so as to connect the Museum with the town.
- Bitumen carpark with curb and guttering, line marking and signage in a carpark area in front of the Museum, including for larger vehicles.
- Security cameras (CCTV) that cover the front of the Museum buildings.
- Street lighting that extends to the front of the Museum buildings.
- Signage.



MAP OF WORKS

5.6 NERRIGA SHOWGROUND

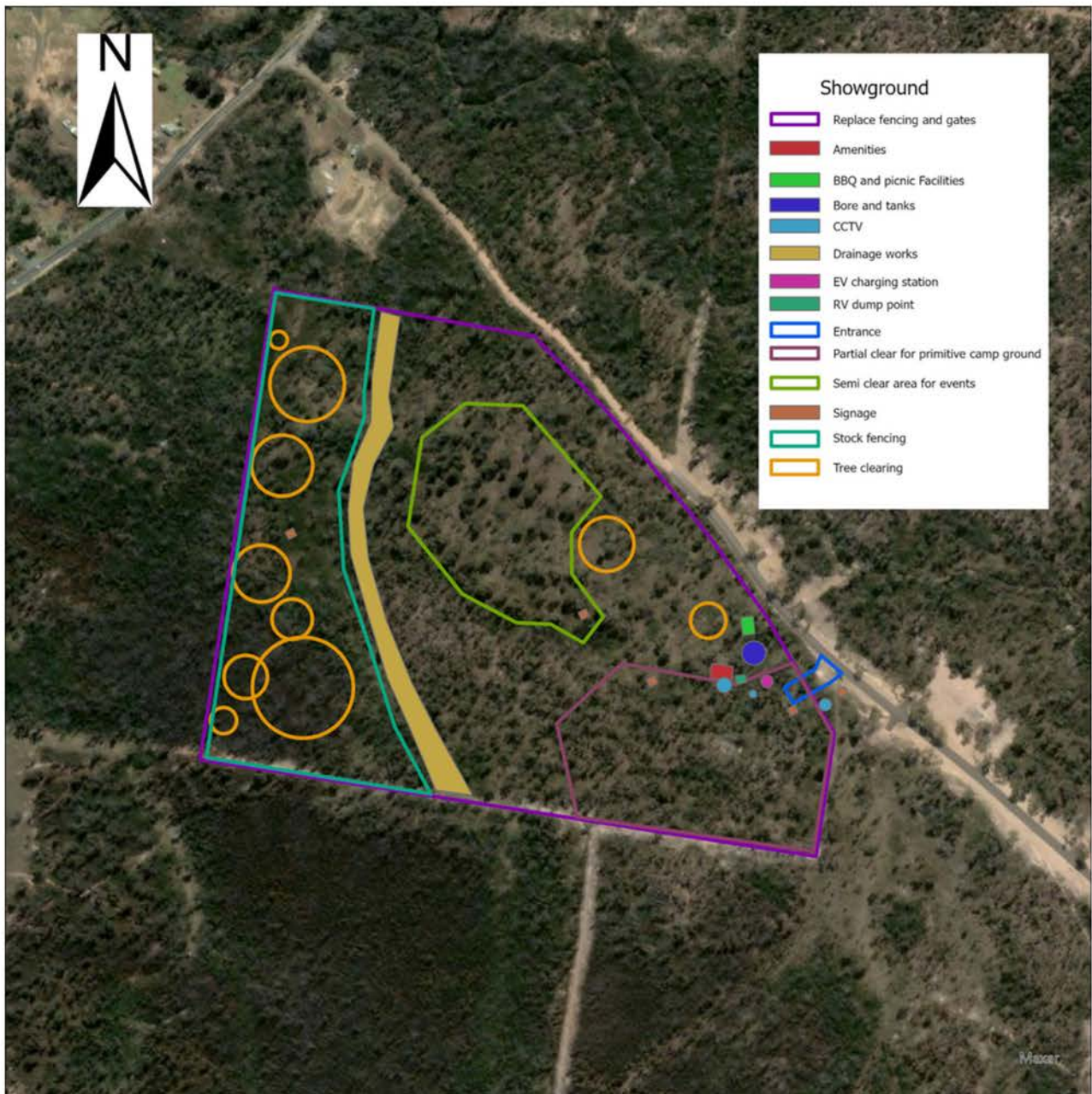
Formerly known as Nerriga Racecourse, Nerriga Showground comprises over 30 hectares for the use and enjoyment of locals and visitors to the region. The site has not been used as a racecourse since the 1940's and has become overgrown and in need of restoration. It was leased for agricultural purposes from this time, until returned to Crown Lands under the trusteeship of Nerriga Progress and Sporting Association, Inc.

The Nerriga community wishes to reinvigorate it to accommodate a diverse range of activities, including camping, markets, special events, workshops and cultural shows.

There is also a desire to provide internal fencing for emergency use by stock, further increasing the resilience of the community in the face of extreme weather events.

The following works are proposed:

- Undertake a series of detailed site surveys.
- Replace fencing and gates.
- Drainage works.
- Toilets / amenities (including onsite wastewater system).
- BBQ and picnic facilities.
- Bore water and storage tanks.
- CCTV security cameras.
- EV charging station.
- RV dump point.
- Clearing for camping, stock access and events.
- Signage.



MAP OF WORKS

5.7 NERRIGA COMMUNITY MEMORIAL

The Nerriga Community Memorial is a small, well-known and much-loved local landmark, built and maintained by the owner of the land on which it is located.

Visitors to the Community Memorial view the photographs and tributes from outside the property boundary, by standing on the footpath. The memorial is located at the furthest point forward at the property boundary and separated from the road by a fence.

This local place carries a lot of local significance. Simple upgrades are proposed to improve the security and amenity of residents and visitors.

The following works are proposed:

- Lighting
- Signage



MAP OF WORKS

5.8 NERRIGA WAR MEMORIAL

Whilst the Nerriga St Mary's Help of Christians War Memorial Catholic Church recognises Nerriga members from World War 1 and 2, the Nerriga community would like to establish a memorial which recognises all theatres of war.

The location of the war memorial needs to be accessible and safe for days of commemoration and assembly, such as ANZAC Day and Remembrance Day.

A monument is proposed to be erected in the Nerriga Sportsground, with fencing to protect photographs and memorabilia for safekeeping. The RSL has provided a letter of support for this grant application.

The following works are proposed:

- Lighting
- Signage
- Erection of a Monument
- Fencing

5. 9 NERRIGA CATHOLIC CEMETERY

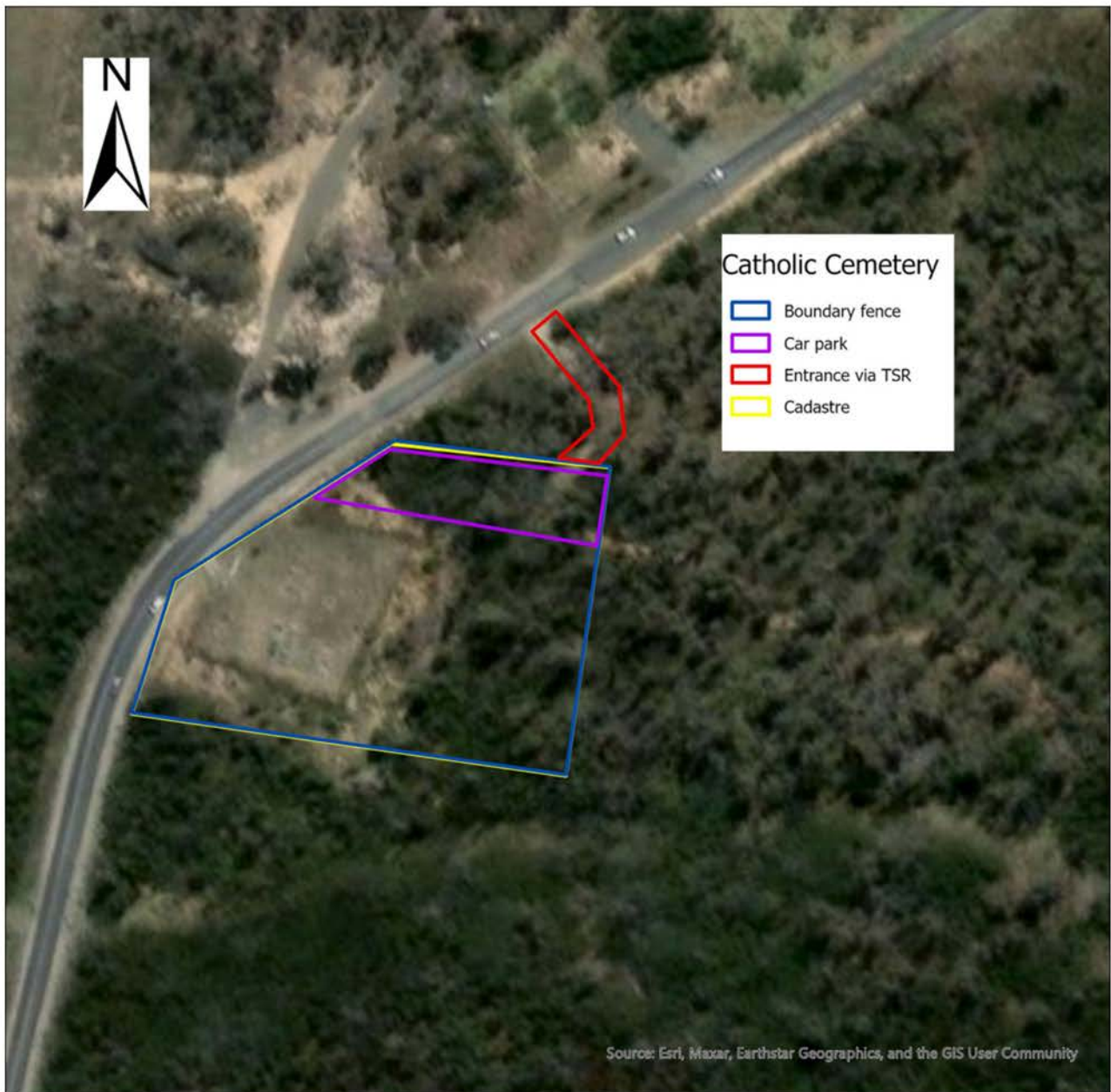
The Nerriga Catholic Cemetery serves as a significant historical site within the Queanbeyan–Palarang Regional Council area. Gazetted on 14 November 1879, with the earliest recorded inscription dating back to 1882, the cemetery reflects the enduring presence of the Catholic community in this rural region.

The site contains approximately 66 memorials, with a high percentage of graves photographed and documented, providing valuable insights into the local heritage. Visitors to the Nerriga Catholic Cemetery can explore the well-preserved monuments and pay respects to the individuals who have shaped the history of Nerriga and its surrounding areas.

Given the location of the cemetery to the sharp corner on the Nerriga Road it is important that an internal car park is established to improve visibility to reduce the risk to people visiting the Cemetery. The community is concerned that, with the upgrade of the Nerriga Road currently being undertaken, the risk of an accident to visitors is likely to increase without this addition.

The following works are proposed:

- Survey the cemetery site to ensure correct land is fenced
- Upgrade boundary fence
- Create entrance from Nerriga Road
- Upgrade internal section for car park
- Reducing speed limit and moving speed limit signage a further 1km away from cemetery



MAP OF WORKS

6. LOCALITY SPECIFIC WORKS

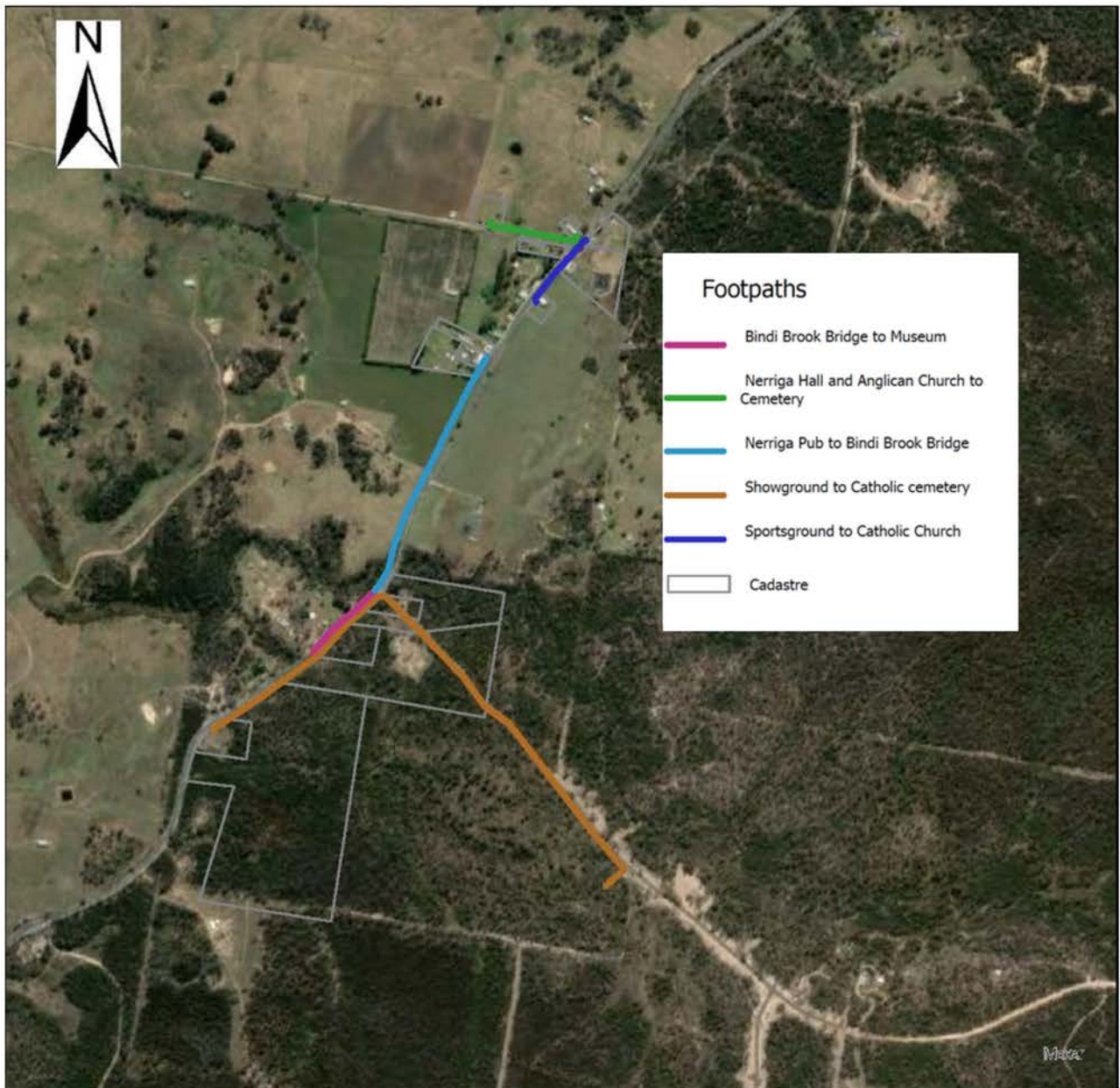
6.1 FOOTPATHS

Footpaths play a vital role in creating safe, accessible, and connected neighbourhoods. They provide safety for pedestrians, reducing the risk of accidents by separating foot traffic from vehicles. This promotes healthier lifestyles and reduces reliance on cars.

Footpaths also enhance accessibility, making it easier for people of all ages and abilities to move freely and independently. Well-designed footpaths will contribute to enhanced vibrancy, safety and accessibility for the Nerriga community and greater amenity for visitors and tourists, by improving accessibility to parks, shops, and other local amenities.

The following footpaths are proposed:

- From Anglican Cemetery to connect with existing footpath at the Nerriga Community Hall
- From Nerriga Hotel precinct to Bindi Brook Bridge
- From Bindi Brook Bridge to the Nerriga Museum and Craft Centre
- From Showground entry on Endrick River Road to Catholic Cemetery and across to Nerriga Museum and Craft Centre



MAP OF WORKS

6.2 WATER

Bore and tank water supplies are critical for communities without reticulated water, providing a reliable supply for drinking, property protection and everyday needs.

In regional areas, bore water improves resilience, allowing communities to thrive despite limited infrastructure. It also acts as a buffer against drought, providing a stable water supply when surface water sources are depleted and in times of emergency such as bushfire. Increasing the number of water tanks further ensures water security by storing harvested water from bore and rainwater sources.

The following works are proposed to increase water security:

- Survey all areas.
- Provide a water bore in the Sportsground precinct to supply the following:
 - NSP's - Community Hall, Anglican Church and Catholic Church
 - Public toilet blocks, park maintenance and Fire Shed
- Under bore Nerriga Rd to supply Anglican Church and Nerriga Community Hall.
- Provide potable rainwater tanks to the following:
 - Community Hall
 - Secretary's shed (roof) and Tennis shed
 - Fire shed
 - Toilet blocks
- Provide non-potable water tanks (bore water) for fire-fighting purposes and sprinklers to Community Hall and Anglican Church.
- Provide solar back up pumps to be used during power outages.

St Bede's Catholic Parish has submitted an application for St Mary's Catholic Church under another grant program for a 160kL water tank to be used by the RFS exclusively in the event of bushfires and structure fires.



MAP OF WORKS

6.3 ELECTRICITY / POWER

Access to reliable electricity is transformative for remote villages, and solar power combined with backup generators offers a sustainable and resilient solution.

Solar energy harnesses abundant sunlight to provide clean, affordable power, reducing dependence on costly and polluting fossil fuels. It enables essential services such as lighting, refrigeration, and communication, and support for small businesses and tourism.

Backup generators play a crucial role in ensuring power continuity during cloudy periods, times of extreme events (such as bushfire) or increased energy demand, making the system reliable even in challenging conditions. Together, solar and backup power systems promote energy independence, reduce environmental impact, and empower remote communities to build a brighter, more sustainable future.

The following works are proposed to upgrade and provide solar and generators as follows:

- ‘Undertake a locality-wide survey and audit for upgrade requirements
- Provide a generator to service Nerriga Community Hall, the Anglican Church, the RFS shed and park infrastructure as a shared resource.
- Provide solar / battery backup pumps to public toilet facilities in Sportsground, the fire shed, Secretary’s shed, and Churches
- Upgrade switchboard and install solar panels and a generator at the Catholic Church
- Rewire Community Hall to compliant standards and upgrade power supply
- Electrical wiring and small switchboard for Anglican Church



MAP OF WORKS

6.4 SIGNAGE

Signage plays a pivotal role in boosting tourism and raising awareness in small towns. Clear, well-placed signs help visitors navigate unfamiliar areas, identify key attractions, and discover hidden gems, enhancing their overall experience. They also serve as a powerful tool for storytelling, sharing the town's history, culture, and natural features, which fosters deeper connections with visitors.

Laser cut tourism Signage is proposed in the following areas:

- Tourist sign in Nerriga Park / Sportsground
- Anglican Church Cemetery
- Anglican Church of the Good Shepherd
- Nerriga Community Hall
- War Memorial (proposed to be erected)
- At the historic buildings
- At the historic Nerriga Hotel
- At St Mary's Help of Christians War
- Memorial Catholic Church
- At Bindi Brook near footbridge on new footpath
- Adjacent to the location of the old train bridge over Bindi Brook on the new footpath
- On new footpath adjacent to location where old police horse paddock and stables were
- At the Museum to include the Sawmill, Cottages and whatever their replacement construction includes
- At the Catholic Cemetery on the new footpath
- Description of Welcome Reef Gold mine, proposed water storage dam and other info at the western end of Nerriga on new footpath
- Description of Timberlight mine and other info at the Northern end of Nerriga
- Quarry, Main Road 92 construction,
- Wool Road history and East.
- Signage for First Nations History and the History of the people of Nerriga



MAP OF WORKS

6.5 SEATING, SURVEILLANCE AND OTHER INFRASTRUCTURE

Seating and CCTV along footpaths enhance both the comfort and safety of pedestrians and users. Strategically placed seating areas provide rest stops for people of all ages, particularly the elderly, children, and individuals with mobility challenges, encouraging more people to walk and engage with their surroundings.

CCTV systems add an essential layer of security, deterring anti-social behaviour and enhancing public safety. They help ensure pedestrians feel secure, especially in areas that may be less frequented or poorly lit.

The provision of eco-garbage bins will provide additional services and amenities to travellers, prevent unsightly litter and reduce maintenance costs by compacting waste automatically.

Together, seating and CCTV foster safer, more inclusive footpath networks, creating environments where people can travel, socialise, and enjoy their community with peace of mind. This benefits locals and visitors to the area.



MAP OF WORKS

6.6 AERODROME – HELICOPTER LANDING SITE

An aerodrome is more than just an airstrip—it's a lifeline for remote communities. Providing crucial access to healthcare, education, and emergency services, an aerodrome ensures residents can receive medical evacuations, essential supplies, and specialist support when needed.

In times of crisis, whether natural disasters or urgent medical situations, an aerodrome would provide an essential gateway to safety and support for people in and around Nerriga.

The Australian Government's Civil Aviation Safety Authority provides requirements for a secondary helicopter landing site, known more broadly as a 'HLS'. The final approach and take off area (FATO) should be capable of the following:

- Enclosing a circle with a diameter equal to one-and-a-half times the D-value ($1.5 \times D$) of the largest helicopter intended to use the site
- Including a safety area extending a distance of at least $0.25 \times D$ or 3 m around the FATO, whichever is larger
- Be free of obstacles
- Provide ground effect
- Capable of at least dynamic load bearing (DLB) for the helicopters being operated.
- The touch down and lift off area (TLOF), being a clear and stable area capable of bearing the dynamic loads which may be imposed by the helicopter on the site by a heavy landing, should, at a minimum, be an area at least $0.83 \times D$ and may or may not be located within the FATO.

As part of this Plan, an analysis will be undertaken of both the sportsground and showground by a CASA- approved aerodrome inspector to determine which of these is best suited for use as an aerodrome. Aerodrome registration and any subsequent approvals will then be navigated as part of Stream One funding.

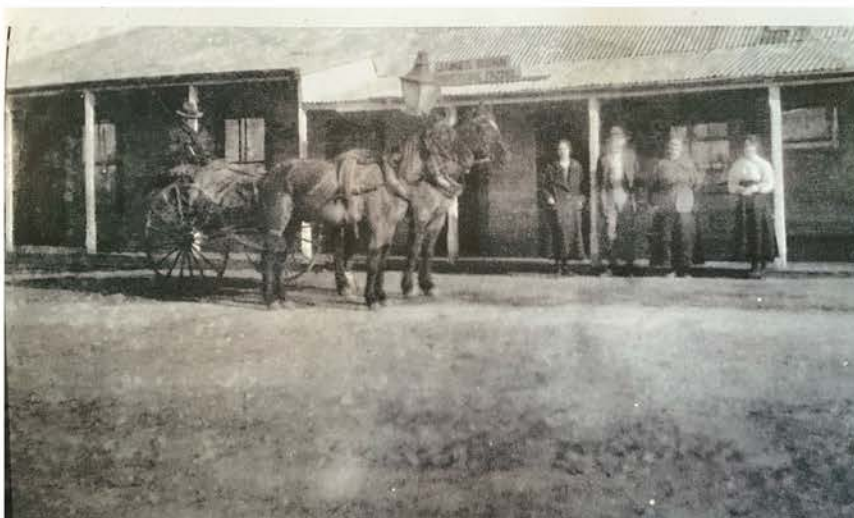
7. TRANSPORT

Nerriga is the transport gateway to the South Coast and the Southern Tablelands.

With the completion of the upgrade of the Nerriga Road (MR92) it is expected that greater connectivity will occur to the King's Highway (B52), Hume Highway (M31) via Oallen Ford and Oallen Roads and Princes Highway (A1).

Transport priorities for safety, efficiency and sustainability are incorporated into this plan as Place-based and Locality Specific Works as follows:

- Installing two EV charging stations to accommodate the increased use of electric cars;
- Developing a camping area for the expected increase in tourist traffic;
- Developing a RV dump point;
- Developing a system of footpaths to encourage activity connectivity within the area;
- Increasing parking facilities within the area; and
- Establishing a helicopter landing site for emergencies on the Nerriga Road and Oallen Road



8. FUNDING

This Plan forms the basis of the Nerriga Grant Application under the the Australian Government's \$400 million regional Precincts and Partnerships Program (rPPP) which is currently open for applications.

The rPPP seeks to support transformative investment in regional, rural and remote Australia based on the principles of unifying regional places, growing economies and serving communities. The rPPP focuses on a **partnership approach**, bringing together governments, businesses and communities to deliver multi-purpose precincts that are place-based, tailored to local needs and positioned around a shared vision, need or theme.

The rPPP supports both precinct development proposals and the delivery of construction-ready precinct projects.

- **Stream One: Precinct development and planning**
 - Project funding of between \$500,000 to \$5 million is available to activate partnerships and deliver an investment-ready precinct plan.
- **Stream Two: Precinct delivery**
 - Project funding of \$5 million to \$50 million is available to help deliver one or more elements of a precinct. This could include enabling infrastructure (roads, pathways, underground infrastructure), open spaces between elements, or a particular building/s that is the catalyst for, or complements investment.

This Plan has been developed with the intention of applying for funding across both Stream One and Stream Two of the rPPP.

Stream One funding is being sought for the finalisation, publication and endorsement of a detailed plan for the region, with development consents, partnerships and detailed project costings for infrastructure works including footpaths and bore water. The appointment of several subject matter experts and consultants is also being sought as part of Stream One funding to oversee the process and provide expertise and this will be detailed in the grant application.

Works to supply bore water and construct footpaths as detailed in 'Locality Specific Works' require approvals under Part 5 of the Water Act, 1912 and Section 138 of the Roads Act, 1993 respectively.

Stream Two funding is being sought for 'Place-based Priority Works' and 'Locality Specific Works' in this Plan that are classed as exempt development within the *State Environmental Planning Policy (exempt and complying development codes) 2008*. Permission for these works to be undertaken as exempt has been granted by signatories and authorised persons as shown in Addendum Three. These works have been costed and are identified as 'shovel ready' in the matrix set out below.

Works are examined in detail in the project matrix and priorities will be set out, based on a 'Plan ready' status for Stream One works, and a 'Shovel ready' status for Stream Two.

9. PARTNERSHIPS AND GOVERNANCE

9.1 PARTNERSHIPS AND SUPPORT

Partnerships have been formed with the following groups and organisations:

- Regional Development Australia
- Kenrick Winchester, Mayor QPRC
- NSW Department of Planning Housing and Infrastructure - Crown Lands;
- Catholic Archbishop of Canberra and Goulburn
- Anglican Church Property Trust Diocese of Sydney
- Rural Fire Service
- RSL - Braidwood sub-branch

Support has been obtained from the following advocates:

- Joanna Gash (former member for Gilmore, Mayor of Shoalhaven)
- Anne Sudmalis (former member for Gilmore)
- Kristy McBain, member for Eden Monaro
- Rebecca Ryan, General Manager QPRC
- Nerriga Hotel

9.2 GOVERNANCE

A steering committee will be established upon a successful funding outcome. The committee will be responsible for overseeing the implementation of works within this Plan, providing oversight and feedback to a Project Manager (appointment dependent upon funding outcome) with quarterly meetings and all reporting in accordance with the requirements of the rPPP.

The steering committee will draw representation from project partners as above, and will include representatives from local and state government, NSW Rural Fire Service, community organisations and businesses, Regional Development Australia and Traditional Owners / First Nations Groups for the area.



10. PROJECT MATRIX

Site for works	Individual work items	Exempt Development	Approval - s.68	Approval - DA	Approval - Roads	Approval - Water	Timeframe for approval	Completion time (days)	Stream One - Plan Ready	Stream Two Shovel Ready
Community Hall	Undertake NSP assessment for bush fire	N/A						60	X	
	Repaint exterior with fire retardant paint	X						30		X
	Replace windows and doors to BAL-12.5	X						15		X
	Install satellite communications system	X						15		X
	Install power generator	X						15		X
	Rewiring electricals	X						30		X
	New toilet and shower facilities		X	X			90	120	X	
	Install lighting and emergency signage	X						30		X
Church of England	Install monitoring and security system	X						30		X
	Undertake NSP assessment for bush fire	N/A						60	X	
	Upgrade / install new doors to BAL-12.5	X						15		X
	Provide access ramp to entry	X						15		X
	Undertake fire assessment	X						15		X
	Install fire resistant shutters to windows	X						15		X
	Repair ceiling	X						30		X
	Seal roof ridge capping and all gaps between eaves and roof	X						15		X
St Mary's Catholic Church	Repaint exterior with fire retardant paint	X						30		X
	Upgrade electrical wiring and install solar for backup power	X						30		X
	Install fire suppression sprinklers on roof	X						30		X
	Enclose subfloor with fire retardant material / brick in	X						30		X
	Undertake NSP assessment for bush fire	N/A						60	X	
	Undertake a fire assessment for NSP during fires and floods	X						15		X
	Paint Windows at Church with fire resistant paint to BAL -12.5	X						30		X
	Paint exterior with fire resistant paint including doors to BAL -12.5	X						30		X
Sportsground and Park	Replace roof with metal	X						30		X
	Place fire sprinklers on roof	X						30		X
	Replace downpipes	X						15		X
	Upgrade current toilets and include shower		X	X			90	120	X	
	Upgrade current boundary fence at church							60		X
	Upgrade electricity switchboard at church and rewire	X						30		X
	Install solar panels and generator at church	X						15		X
	Method for moving pews when church is being used as a safe haven	X						15		X
Museum	Public Toilet Upgrade - provide additional facilities		X	X			120	120	X	
	Upgrade Secretary's shed in Nerriga park for food services use			X			120	120	X	
	Complete tennis court work	X						60		X
	Child proof fence around playground equipment	X						30		X
	Improve Park perimeter fencing	X						60		X
Sportsground and Park	Provide shade trees and seating in park	X						60		X
	Footpath - Bindi Brook to Museum				X		120	180	X	
	Bitumen carpark with curb, guttering, line marking and signage			X			90	120	X	
	Security cameras (CCTV) that cover the front of the Museum	X						15		
Museum	Street lighting that extends to the front of the Museum	X						30		

10. PROJECT MATRIX

Site for works	Individual workitems	Exempt Development	Approval - s.68	Approval - DA	Approval - Roads	Approval - Water	Timeframe for approval	Completion time (days)	Stream One - Plan Ready	Stream Two Shovel Ready
Showground	Replace fencing and gates	X						30		X
	Drainage works	X						60		X
	Toilets/ amenities (including onsite wastewater system)		X	X			120	120	X	
	RV dump point		X	X			120	30	X	
	BBQ and picnic facilities	X						60		X
	Bore water and storage tanks					X	120	120	X	
	CCTV security cameras	X						60		X
	EV charging station	X						120		X
	Clearing for camping, stock access and events	X						60		X
	Signage	X						30		X
Community Memorial	Signage	X						30		X
	Lighting	X						30		X
War Memorial	Design of monument	X								
	Lighting	X						30		X
	Signage	X						30		X
	Erection of a Monument	X						120		X
	Fencing	X						30		X
Catholic Cemetery	Survey the cemetery site to ensure correct land is fenced	X						15	X	
	Upgrade boundary fence	X						30		X
	Create entrance from Nerriga Road			X	X		120	120	X	
	Upgrade internal section for car park	X		X				120		X
Footpaths	Detailed footpath design							60	X	
	C of E Cemetery to connect with existing footpath at the Nerriga Community Hall				X		120	240	X	
	Nerriga Hotel precinct to Bindi Brook bridge				X		120	240	X	
	Bindi Brook Bridge to the Old School Museum				X		120	240	X	
	Showground entry (Endrick River Road) to Catholic Cemetery to Old School Museum				X		120	240	X	
Water	Water bore at sportsground precinct					X	60	30	X	
	Underbore Nerriga Road to supply C of E and Community Hall				X		120	120	X	
	Potable water tanks to secretary's shed, Fire Shed, Toilet Block (sportsground)	X						60		X
	Solar backup pumps to be installed to tanks as per electricity section below									X
Electricity/ Power	Install solar backup pumps to tanks - secretary's shed, Fire Shed, sportsground and church	X						60		X
Signage	Install laser cut signage at each of the locations identified in the Plan (15+ signs)	X						120		X
Seating and CCTV	Install 8-10 seats for public use around Nerriga village	X						60		X
	Install CCTV at museum, sportsground and approach / exits to Nerriga - 5-7 units	X						60		X