

Googong DCP

Appendix 5

Neighbourhood Structure Plans

**Neighbourhood
1B**

Principal plan adopted by Council:	13 October 2010
Document ID:	891339

Googong DCP – Appendix 5 – Neighbourhood Structure Plans – Neighbourhood 1B

Offices: 144 Wallace St, Braidwood
10 Majara St, Bungendore
256 Crawford St, Queanbeyan

Contact: Ph: 1300 735 025
E: council@qprc.nsw.gov.au
W: www.qprc.nsw.gov.au



TEMPORARY 200m WRP COLOUR BUFFER APPLIES UNLESS SUCH TIME AS THE STPS OPERATIONAL AND IT CAN BE DEMONSTRATED FOLLOWING TESTING AND COMPLIANCE THAT THE COLOUR BUFFER CAN BE REDUCED.

STRUCTURE PLAN LEGEND
 NOTES SUBJECT TO DETAIL DESIGN AND FINAL SURVEY

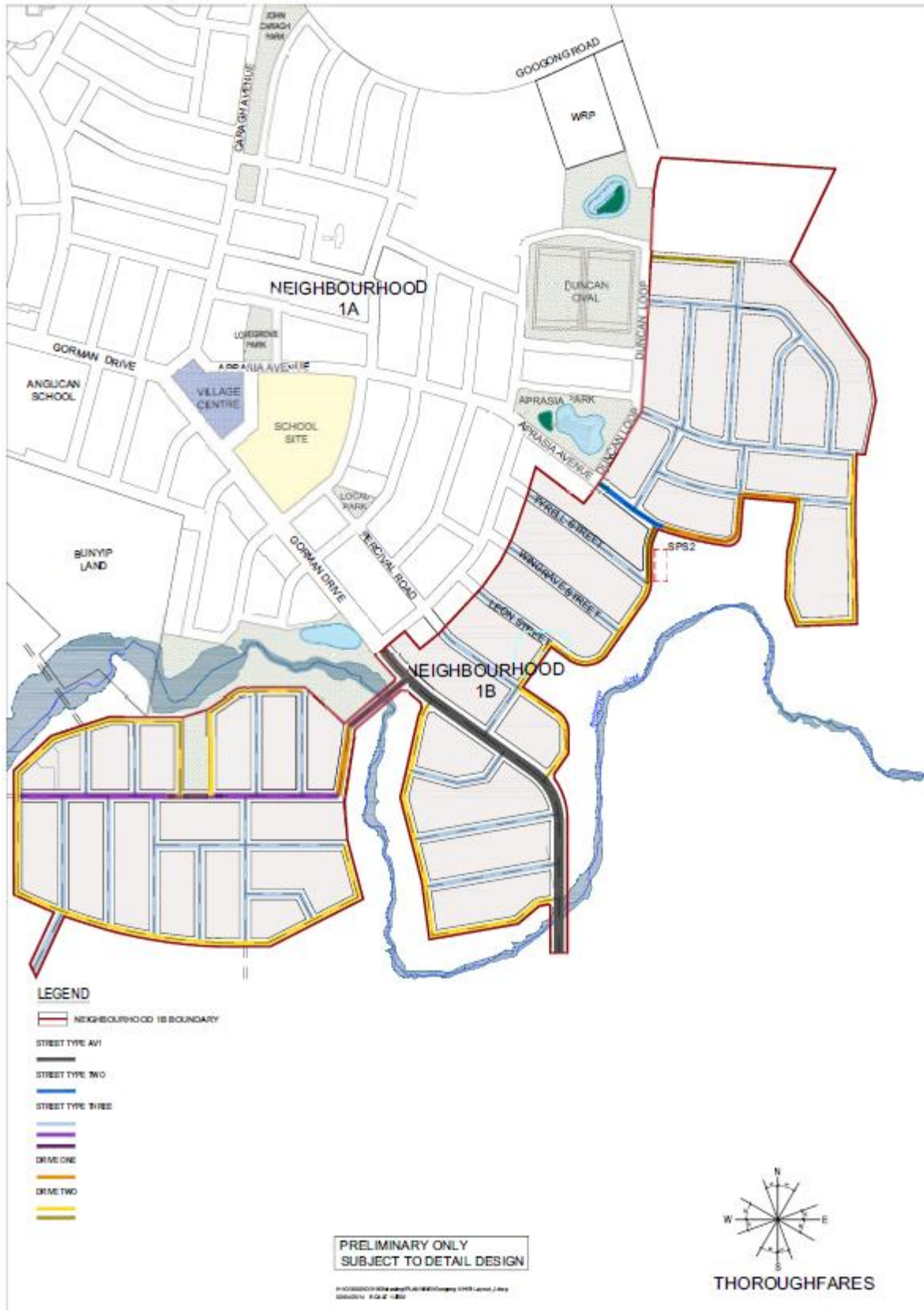
- INDICATIVE STAGE BOUNDARY
- PROPOSED PTWL CONSERVATION AREA BOUNDARY FEEDS
- RESIDENTIAL
- INDICATIVE OPEN SPACE AREA
- WATER RECYCLING PLANT
- WATER RECYCLING PLANT BUFFER RESERVE
- 8.0m WIDE FIRE TRAIL FOR RESTRICTED BUSHLAND INTERFACE ACCESS
- PINK TAILED WORM LIZARD (PTWL) CONSERVATION AREA
- ULTIMATE WATER RECYCLING PLANT BUFFER
- TEMPORARY WRP BUFFER

**Neighbourhood 1B
Structure Plan**

Note:
Preliminary Plans
subject to Development
Approval

PROJECT GOOGONG NEIGHBOURHOOD 1B		
DRAWN: STRUCTURE PLAN		
PROJECT NO: 13/1024	DRAWN BY: L303	DATE: 15/26/2014
DATE: 15/26/2014		SCALE: AS SHOWN

Neighbourhood 1B Thoroughfare Plan









Googong DCP – Appendix 5 – Neighbourhood Structure Plans – Neighbourhood 1B

Neighbourhood 1B Bus, Cycle and Pedestrian Movement Plan



LEGEND

-  NEIGHBOURHOOD 1B BOUNDARY
-  PEDESTRIAN PATH 1.5m
-  KEY PATHS 2.0m
-  DEDICATED ON ROAD BICYCLE LANE
-  BUS ROUTE TO SERVICE NH1B
-  NH1A PEDESTRIAN PATH 1.5m
-  NH1A KEY PATHS 2.0m

Note: Preliminary Plans – Subject to Development Approval

Googong DCP – Appendix 5 – Neighbourhood Structure Plans – Neighbourhood 1B

Neighbourhood 1B Open Space Master Plan

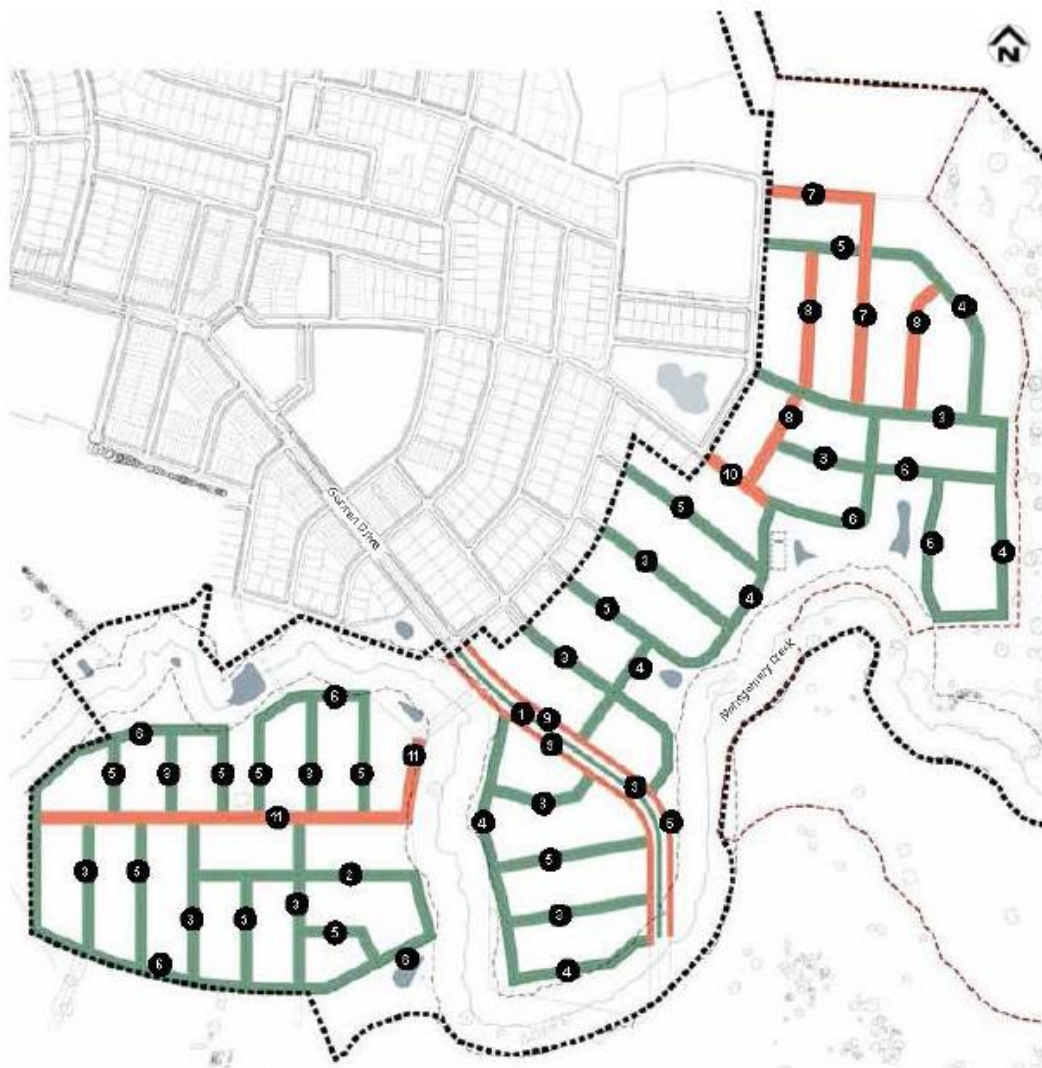
(new plan)



Note: Preliminary Plans –
Subject to Development
Approval

Googong DCP – Appendix 5 – Neighbourhood Structure Plans – Neighbourhood 1B

Neighbourhood 1B Street Tree Master Plan and Species List



<p>Native Trees</p> <ul style="list-style-type: none"> 1 Eucalyptus alba - White Gum 2 Eucalyptus cinerea - Apple Box 3 Eucalyptus manillera ssp. maculosa - Red Spotted Gum 4 Eucalyptus polyanthemus - Red Box 5 Eucalyptus rossii - Inland Scribbly Gum 6 Eucalyptus stellulata - Black Salloo 	<p>Exotic Trees</p> <ul style="list-style-type: none"> 7 Fraxinus pennsylvanica - Green Ash 8 Fraxinus oxycarpa "Raywood" - Raywood Ash 9 Platanus orientalis - Oriental Plane 10 Quercus palustris - Pin Oak 11 Zelkova serata - Japanese Zelkova
---	---

Note: Preliminary Plans – Subject to Development Approval

Googong DCP – Appendix 5 – Neighbourhood Structure Plans – Neighbourhood 1B

Neighbourhood 1B Groundcover Plan and Species List

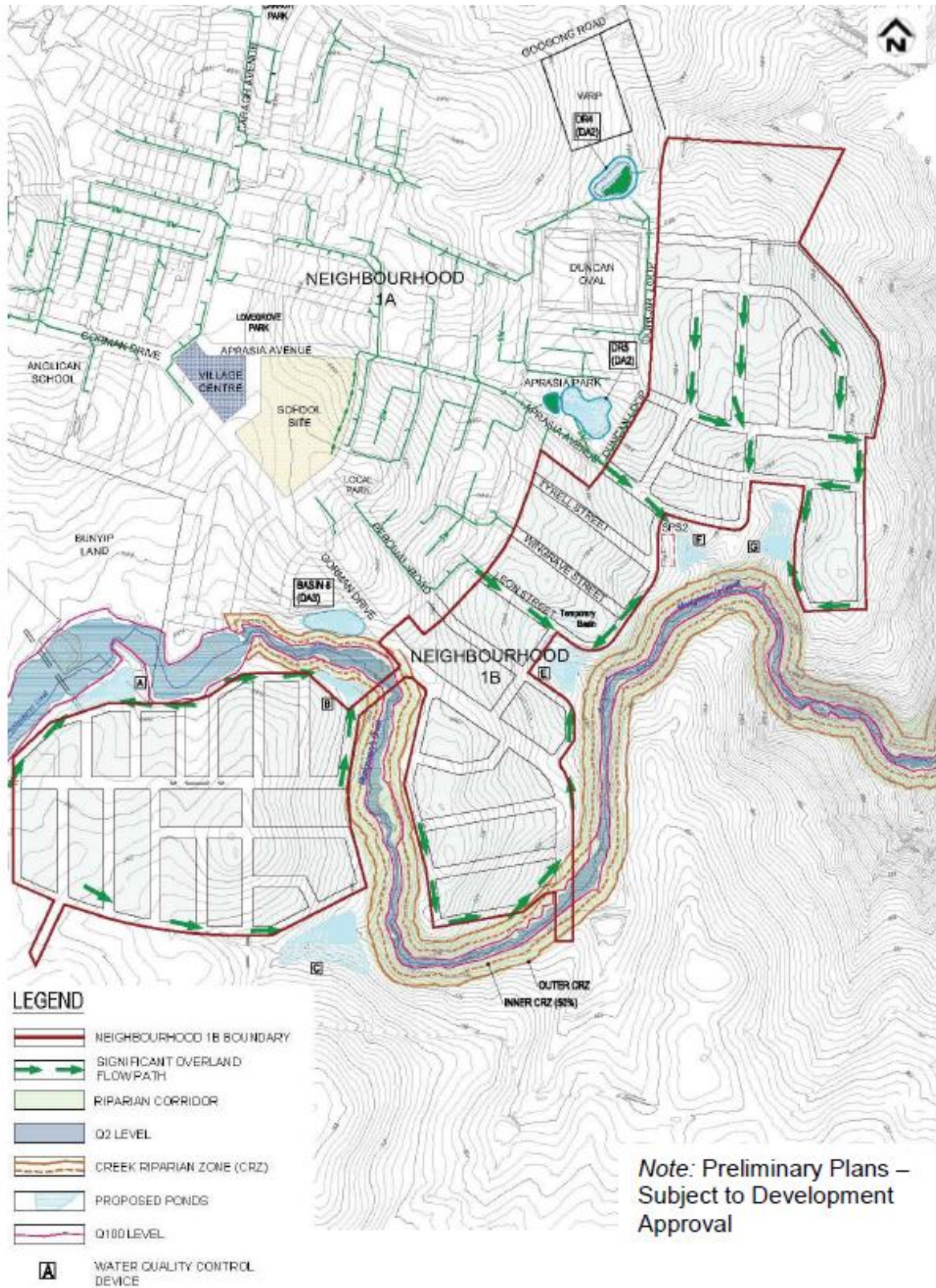


-  Native Species Mix (Gorman Drive med ibn)
-  Native Species Mix (Gorman Drive)
-  Exotic / Native Species (Feature)
-  Standard Dryland Grass (Local Streets)
-  NH1B Boundary

*Note: Preliminary Plans –
Subject to Development
Approval*

Googong DCP – Appendix 5 – Neighbourhood Structure Plans – Neighbourhood 1B

Neighbourhood 1B Stormwater Strategy



Neighbourhood 1B Googong Bus Routes



Neighbourhood 1B Emergency Egress Plan from NH 1B

