



Googong DCP

Appendix 6

Neighbourhood Structure Plans

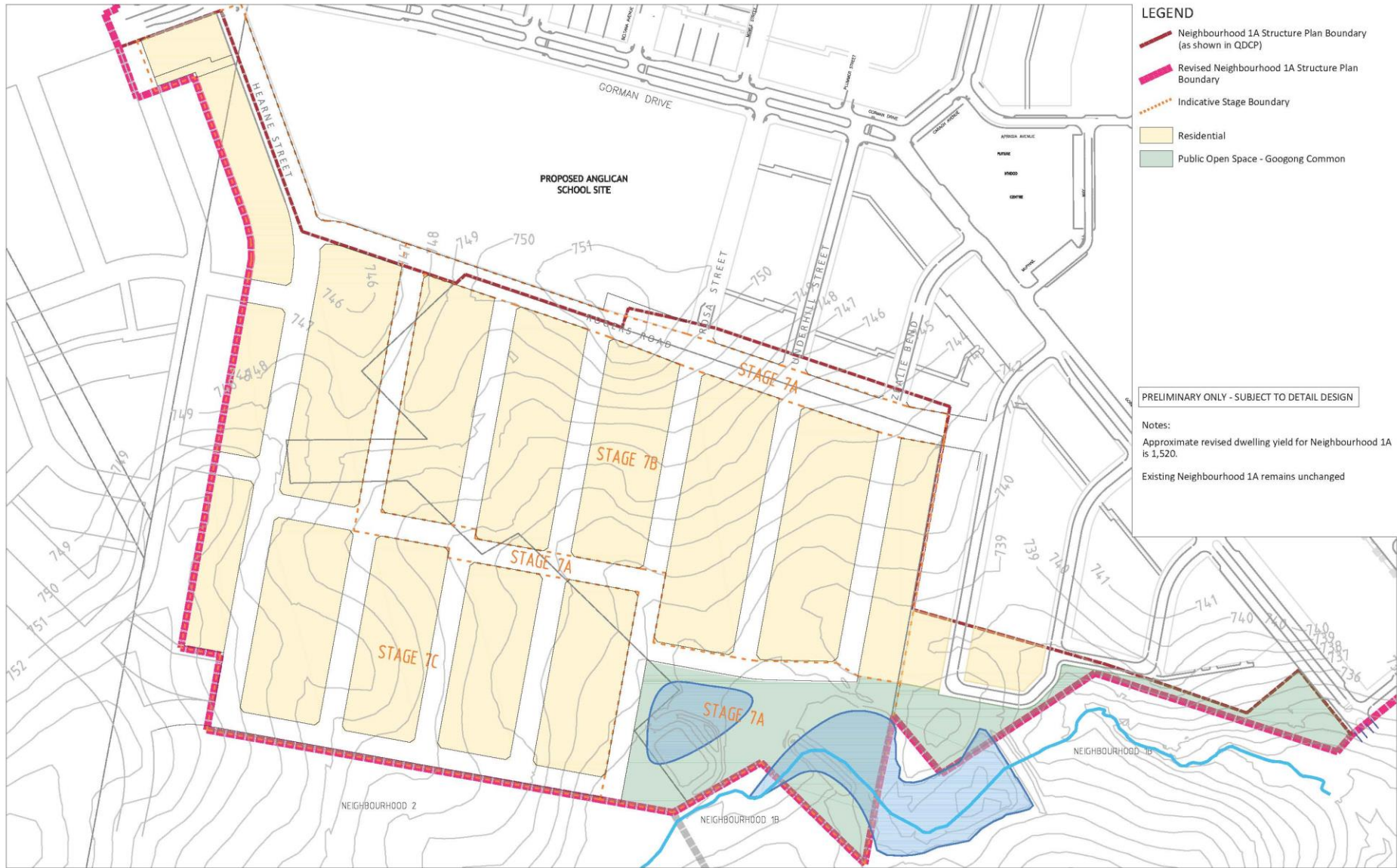
Bunyip

Principal plan adopted by Council:	13 October 2010
Document ID:	89134

Googong DCP – Appendix 6 – Neighbourhood Structure Plans - Bunyip

Offices: 144 Wallace St, Braidwood
10 Majara St, Bungendore
256 Crawford St, Queanbeyan

Contact: Ph: 1300 735 025
E: council@qprc.nsw.gov.au
W: www.qprc.nsw.gov.au



PROPOSED ANGLICAN SCHOOL SITE

GORMAN DRIVE

HEARNS STREET

MOSA STREET

UNDERHILL STREET

LESLIE BEND

STAGE 7C

STAGE 7B

STAGE 7A

STAGE 7A

NEIGHBOURHOOD 2

NEIGHBOURHOOD 1B

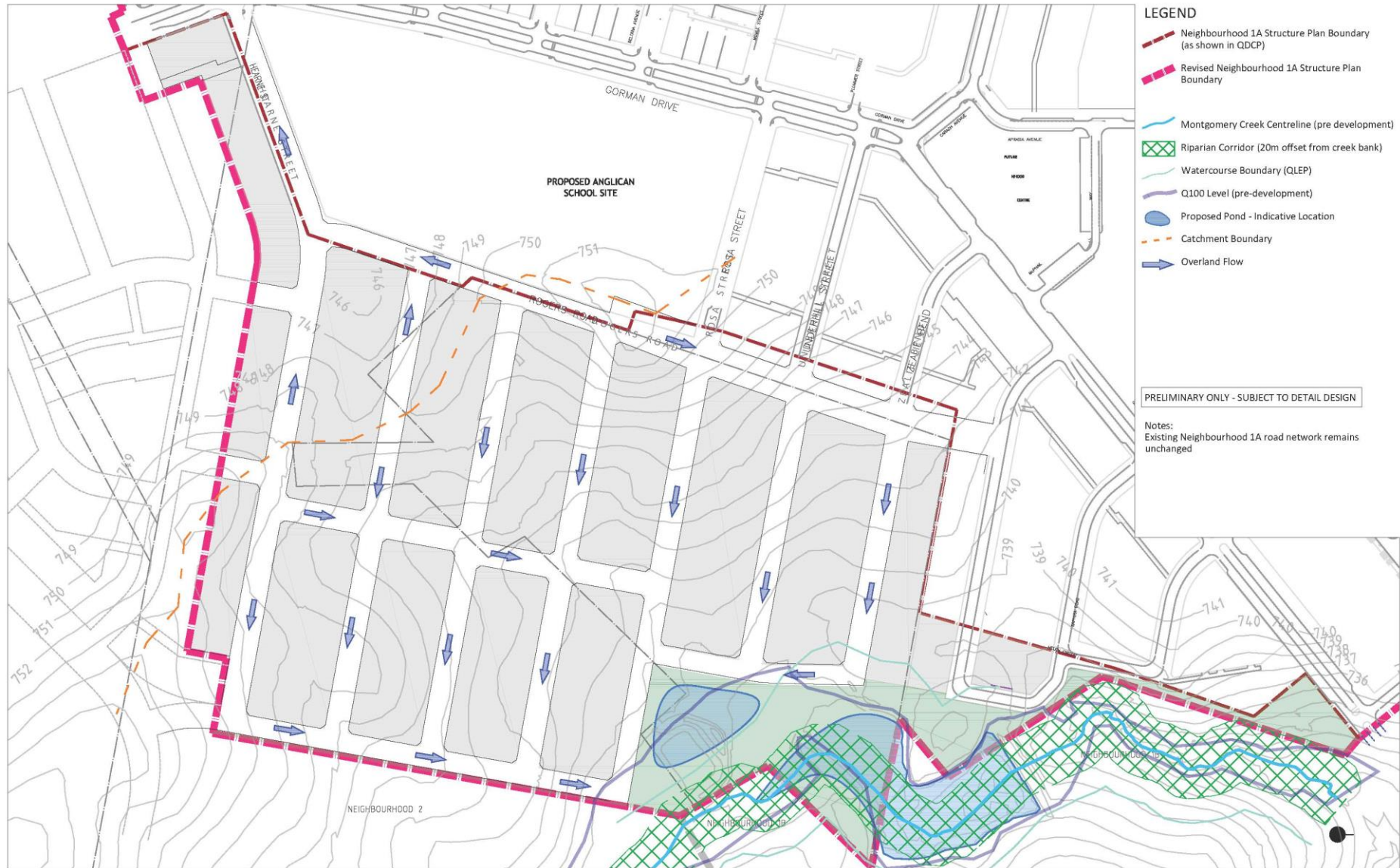
NEIGHBOURHOOD 1B



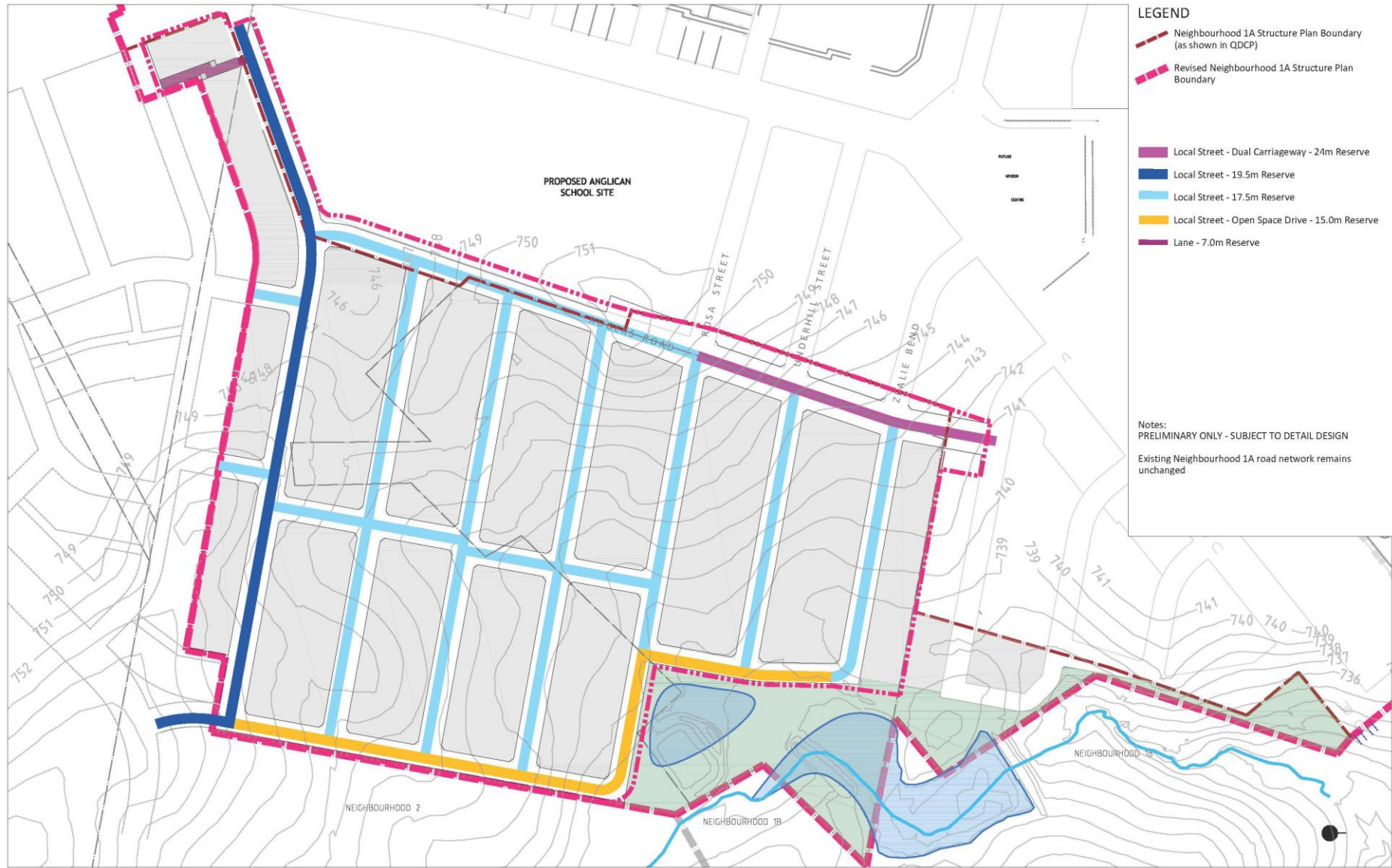
Googong DCP – Appendix 6 – Neighbourhood Structure Plans - Bunyip



Googong DCP – Appendix 6 – Neighbourhood Structure Plans - Bunyip



Googong DCP – Appendix 6 – Neighbourhood Structure Plans - Bunyip



Googong DCP – Appendix 6 – Neighbourhood Structure Plans - Bunyip

