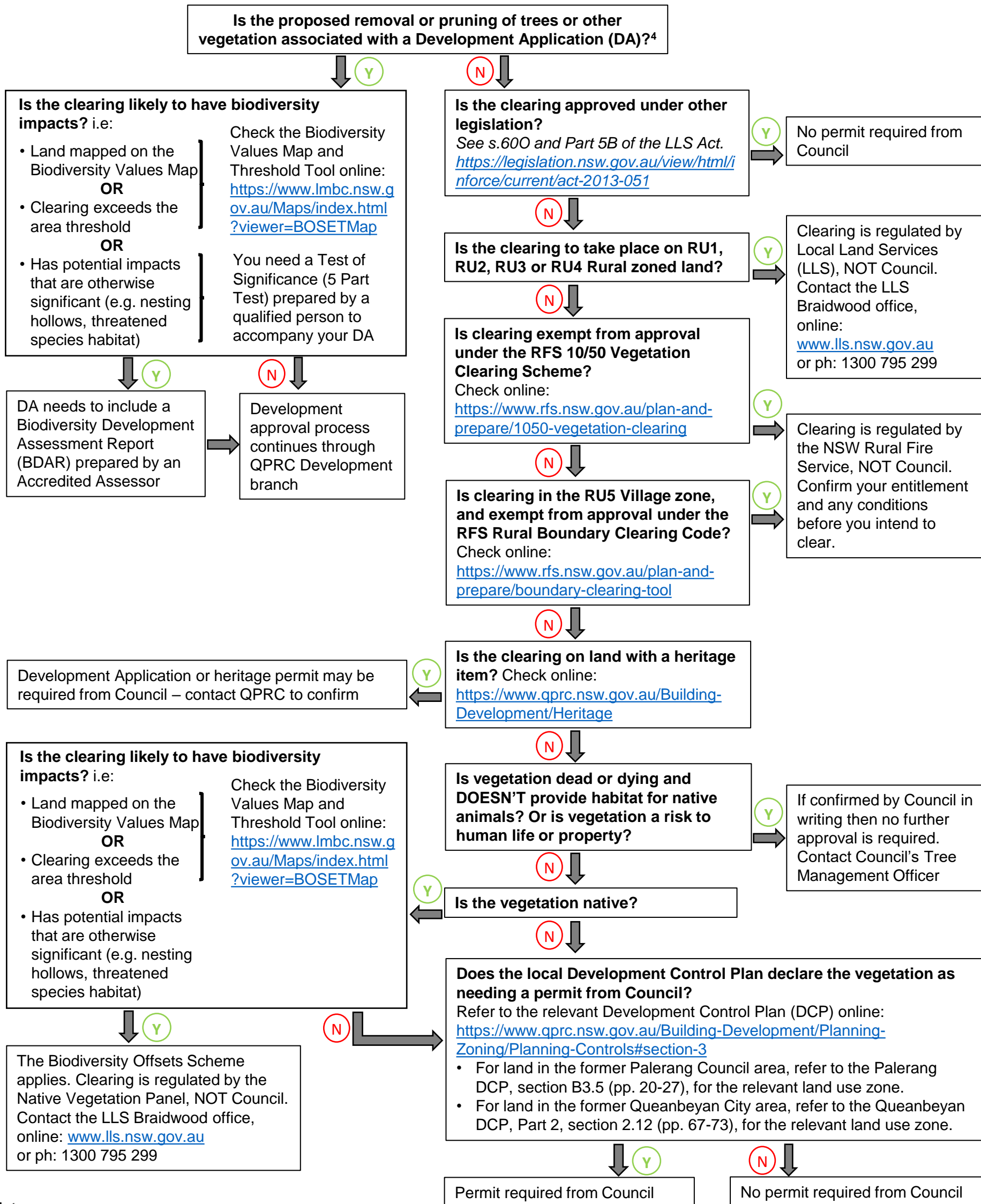


VEGETATION CLEARING¹ IN QPRC CONSERVATION & RURAL ZONES (C2-C4, RU1-RU5²)

Note: this is a simplified and localised extract from the more comprehensive NSW government flowchart³



Notes

- 1 Vegetation clearing is defined in Clause 4 of the SEPP as to cut down, fell, uproot, kill, poison, ringbark, burn or otherwise destroy the vegetation, or lop or otherwise remove a substantial part of the vegetation: www.legislation.nsw.gov.au/view/html/inforce/current/epi-2017-0454#sec.4
- 2 Find out what zoning applies to your property here: www.qprc.nsw.gov.au/Building-Development/Planning-Zoning/Online-Mapping
- 3 Refer to the *NSW Biodiversity Offsets Scheme and Land Management Framework Biodiversity Assessment and Approval Pathways for Local Government* www.environment.nsw.gov.au/-/media/OEH/Corporate-Site/Documents/Animals-and-plants/Biodiversity/biodiversity-assessment-approval-pathways-local-government-2020.pdf
- 4 Information on development that requires development approval from Council, and the Development Application process, can be found in QPRC's *The Development Application Process* page online: <https://www.qprc.nsw.gov.au/Building-Development/The-DA-Process>